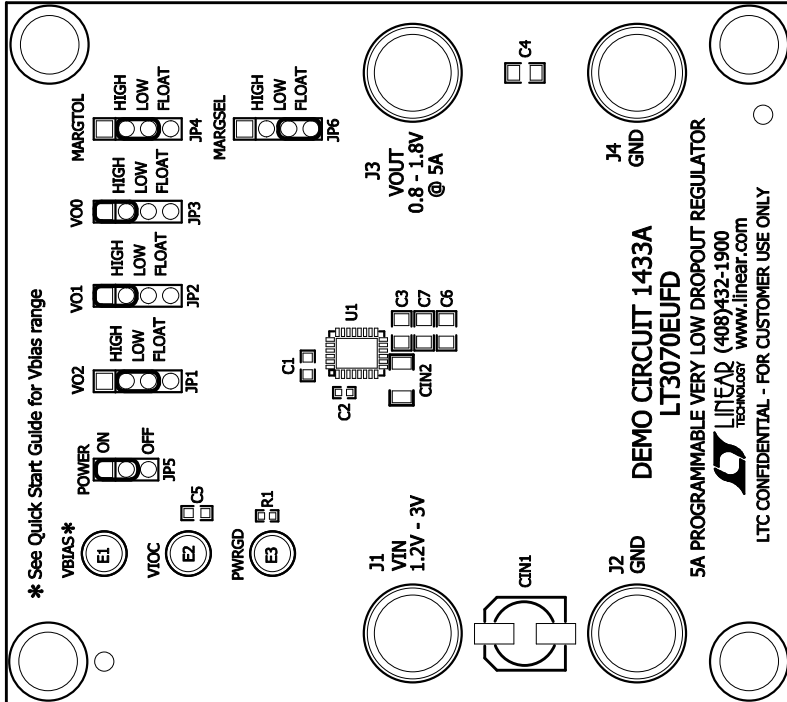


Linear Tech. Corp.
Demo Circuit 1433A

Silkscreen Top



REVISIONS

REV	DESCRIPTION	APPR	DATE
2	PRODUCTION	MolyZ	09/11/09

NOTES: UNLESS OTHERWISE SPECIFIED

1. WORKMANSHIP SHALL BE IN ACCORDANCE WITH IPC-A-610.
2. INSTALL SHUNTS AS SHOWN.
3. DEPANLIZE BOARDS AFTER ASSEMBLY AND ROUTE-OUT THE BREAKOUT TABS ON FOUR SIDES OF THE BOARD EDGE.
4. ASSEMBLY PROCESS SHALL INCLUDE: REFLOW SOLDER TOP SIDE SMD.

APPROVALS

PCB DES.	INIT	DATE
ENG.	RB	09/11/09
	MolyZ	09/11/09
SCALE: NONE		



1630 MCCARTHY BLVD
MILPITAS, CA 95035
PH: (408)432-1900
LTC CONFIDENTIAL -
FOR CUSTOMER USE ONLY

TITLE: TOP ASSEMBLY DRAWING

5A PROGRAMMABLE VERY LOW DROPOUT REGULATOR

SIZE	IC NO.	REV.
	LT3070EUFD	2
FILENAME: DC1433A-2.PCB		SHT 1 of 1