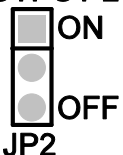


Place Shunt at: JP1 - pins 1 & 2.  
JP2 - pins 1 & 2



(408) 432-1900  
www.linear.com

OUTPUT 2

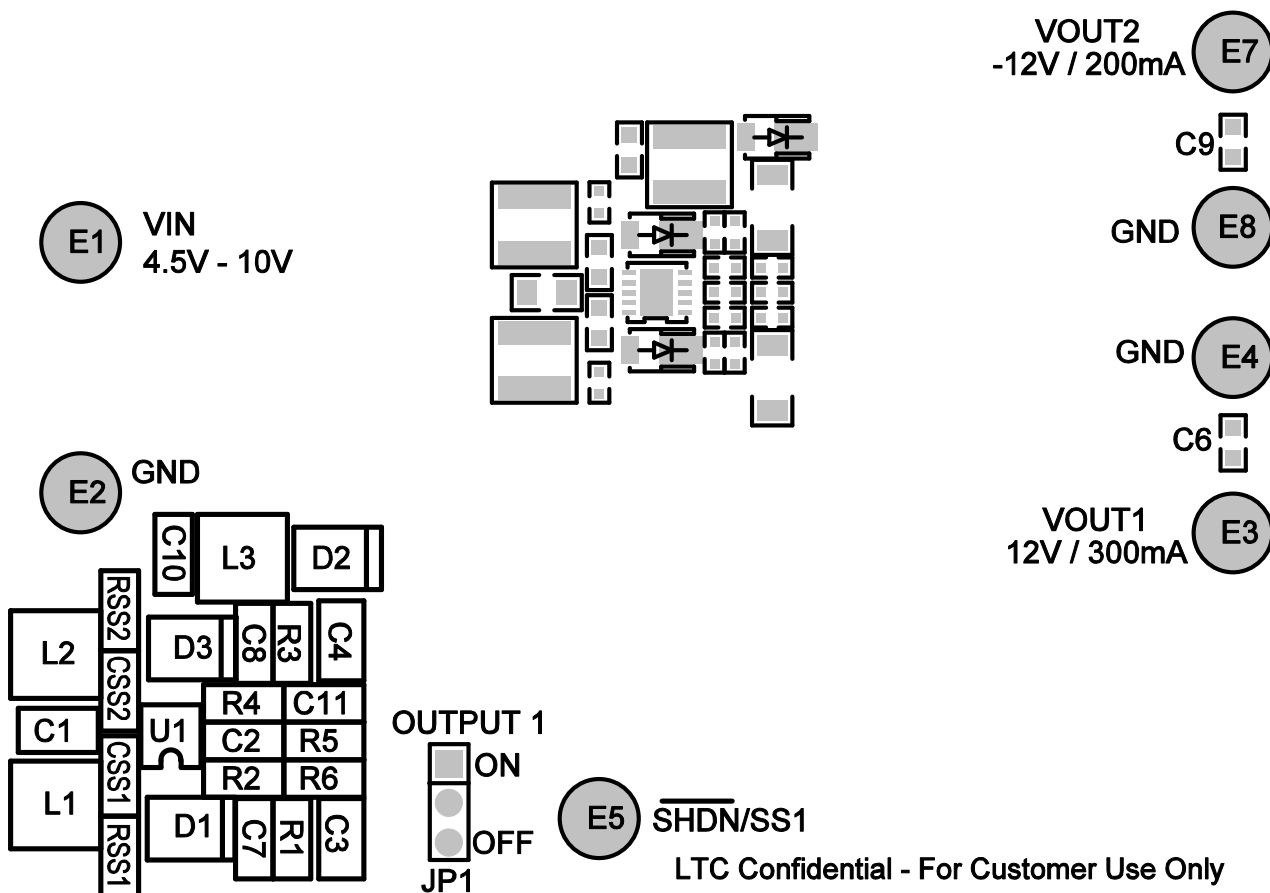


SHDN/SS2

**LT3471EDD**

**DEMO CIRCUIT 1280A**

## DUAL OUTPUT STEP-UP SUPPLIES



LTC Confidential - For Customer Use Only

## ASSEMBLY, TOP DRAWING

COMPANY LINEAR TECHNOLOGY CORPORATION		
TITLE A/W, LTC3471EDD DEMO PCB	NO. DC1280A	REV 0
TOP SILKSCREEN		
DSNR: Rudy	SHT 1 OF 10	DATE: 07/25/07