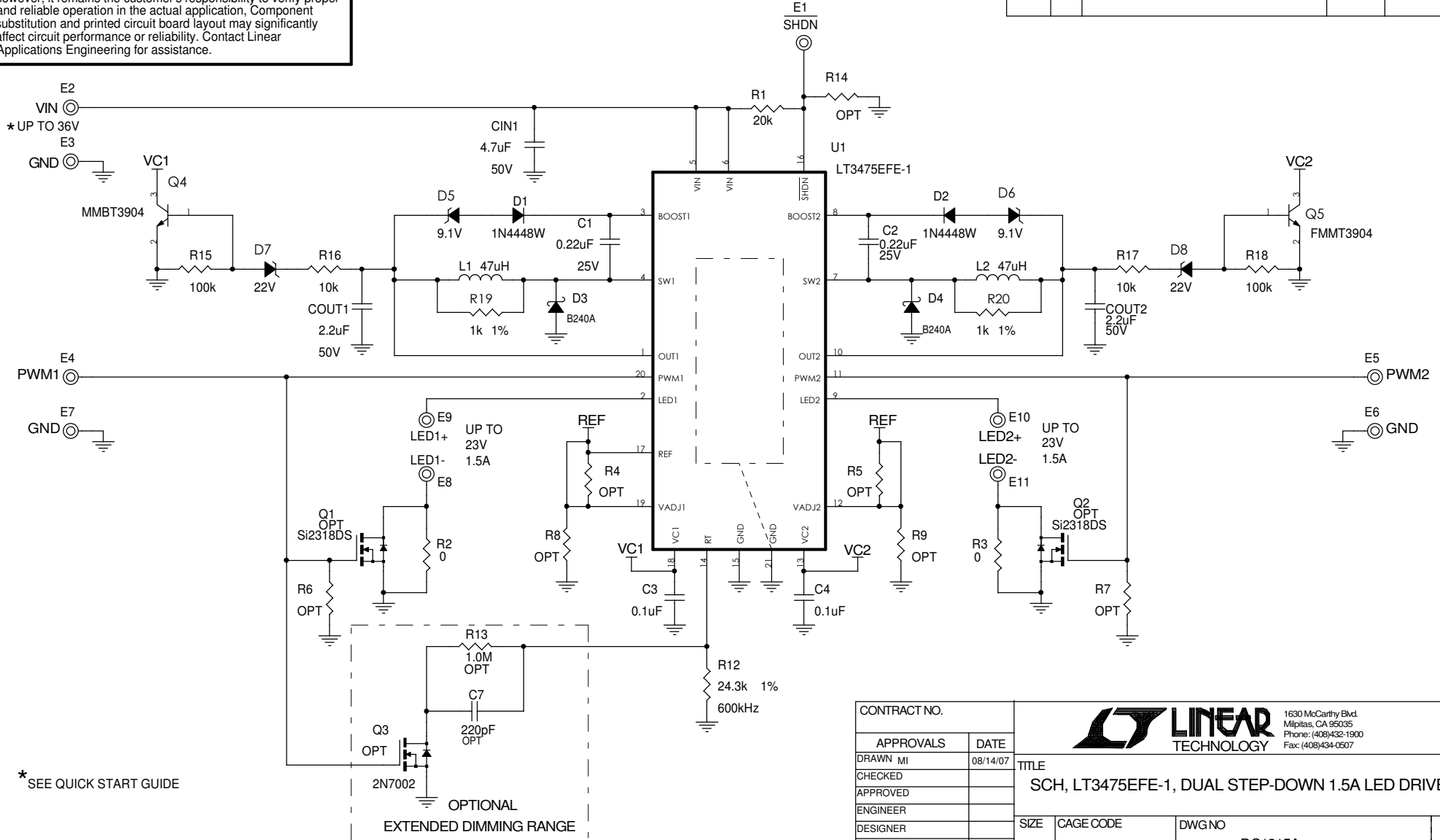



This circuit is proprietary to Linear Technology and supplied for use with Linear Technology parts.
Customer Notice: Linear Technology has made a best effort to design a circuit that meets customer-supplied specifications; however, it remains the customer's responsibility to verify proper and reliable operation in the actual application. Component substitution and printed circuit board layout may significantly affect circuit performance or reliability. Contact Linear Applications Engineering for assistance.

REVISION HISTORY				
ECO	REV	DESCRIPTION	DATE	APPROVED
	1	PROTO	08/15/07	



* SEE QUICK START GUIDE

CONTRACT NO.		 1630 McCarthy Blvd. Milpitas, CA 95035 Phone: (408)432-1900 Fax: (408)434-0507		
APPROVALS	DATE			
DRAWN MI	08/14/07	TITLE		
CHECKED		SCH, LT3475EFE-1, DUAL STEP-DOWN 1.5A LED DRIVER		
APPROVED		SIZE		REV
ENGINEER		CAGE CODE	DWG NO	1
DESIGNER		DC1315A		
Tuesday, January 22, 2008		SCALE: NONE	FILENAME: 1315A-1.DSN	SHEET 1 OF 1