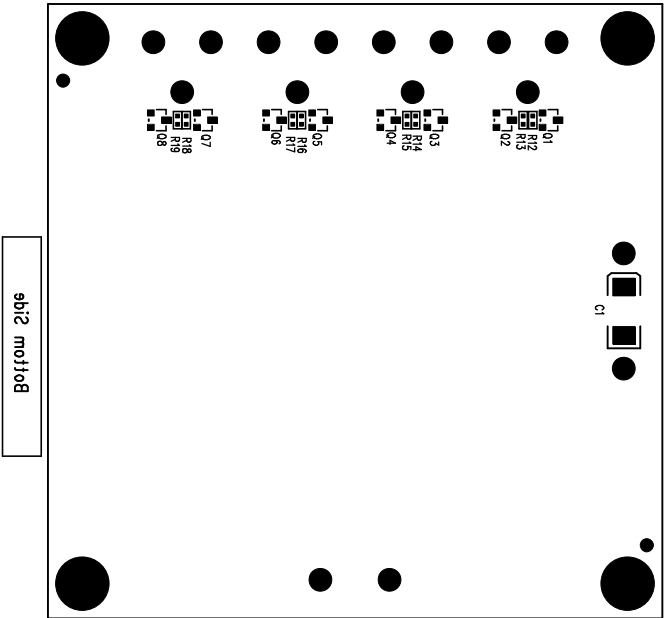


REVISIONS			
REV	DESCRIPTION	APPR	DATE



Assembly Bottom Drawing

Assembly Bottom Drawing

APPROVALS			
DRAWN	INIT	DATE	
CHECK	HELEN	6/22/06	
DESIGN			
ENGR	WALKER B.	6/22/06	
TITLE: L134/76UHF			
Quadruple High Power LED Driver in Buck Mode			
SIZE	A	DEMO	DC976A
SCALE	NONE		SHEET 1 of 1



LINEAR

TECHNOLOGY

1630 McCortly Blvd.  
Milpitas, CA 95035  
Ph: (408)432-1900