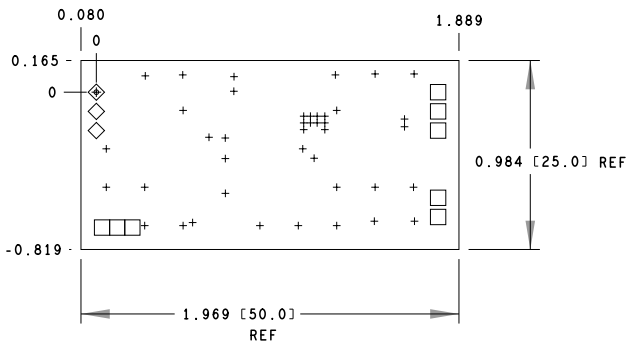


REVISIONS			
REV	DESCRIPTION	DATE	APPROVED
A	INITIAL RELEASE	27NOV18	J.VIERNES
B	AS PER ECR-086417	07MAY19	J.VIERNES

HOLE TOLERANCE


UNLESS SPECIFIED
PLATED: +/- 3 MILS



FINISHED HOLES IN MILS				
ALL UNITS ARE IN MILS				
FIGURE	SIZE	PLATED	QTY	TOLERANCE/NOTES
+	12.0	PLATED	41	SEE FAB NOTES 15
□	40.0	PLATED	8	
◇	45.0	PLATED	3	

DIA MAX

PRIMARY SIDE

UNLESS OTHERWISE SPECIFIED DIMENSIONS ARE IN INCHES TOLERANCES DECIMALS FRACTIONS ANGLES .XX -.010 --1/32 -- 2 .XXX -.005 .XXXX -.0050	APPROVAL		DATE		<div><div>ANALOG DEVICES</div><div>WWM DIVISION 804 WOBURN STREET WILMINGTON, MA 01887</div><div>TITLE FABRICATION SCP-LT3483 EVALZ</div></div>			
	TEMPLATE ENGINEER N/A		N/A					
	HARDWARE SERVICES N/A		N/A					
	HARDWARE SYSTEMS G. AGUIRRI		N/A					
MATERIAL	TEST ENGINEER N/A		N/A		SIZE	FSCM NO	DRAWING NUMBER	REV
	COMPONENT ENGINEER A. AGENA		27NOV18					
	TEST PROCESS N/A		N/A					
	HARDWARE RELEASE K. JABATAN		27NOV18					
FINISH	DESIGNER J. M. PLAZA		27NOV18		C	24355	09-051144	B
	PTD ENGINEER J. VIERNES		27NOV18					
	CHECKER J. VIERNES		27NOV18					
DO NOT SCALE DWG				SCALE 1/1		SHEET 1 OF 2		

4

3

2

1

D

D

C

C

B

B

A

A

SPECIFICATIONS:

ROHS COMPLIANCE NOTE: (Required for Customer Boards) Add to top of MATERIALS
HOMOGENOUS MATERIALS IN THIS BOARD SHALL BE COMPLIANT
THE EU RoHS DIRECTIVE 2002/95/EC

MATERIALS; ALL LAMINATES AND BONDING MATERIALS SHOULD BE SELECTED FROM
IPC-4101 OR IPC-4103, MINIMUM Tg>170degC, Td>300degC,
U.L. RATING OF 94 V-0

MATERIAL FAMILY; ISOLA 370HR

CLADDING; EXTERNAL LAYERS 2 OZ. AFTER PLATING.
INTERNAL SIGNAL LAYERS 1 OZ. COPPER.
INTERNAL PLANE LAYERS 1 OZ. COPPER.

NOTE: IF THE LAYER STACKUP CONFLICTS WITH THE ABOVE
CLADDING SPECIFICATIONS THEN THE LAYER STACKUP SHALL
TAKE PRECEDENCE.

SOLDER MASK; SHALL BE LIQUID PHOTOIMAGEABLE (LPI) APPLIED ON BOTH SIDES
OVER BARE COPPER OR GOLD AND SHALL MEET IPC-SM-840
(LATEST REV.) CLASS 3. COLOR GREEN.

SILK SCREEN; SHALL BE PERMANENT NON-CONDUCTIVE EPOXY INK, COLOR: WHITE
SYNTHETIC INKJET PRINTING ALLOWED FOR DENSE BOARDS,
COLOR: WHITE

SURFACE FINISH; ENIG (Electroless Nickel/Immersion Gold)
PER IPC-4552 LATEST REVISION

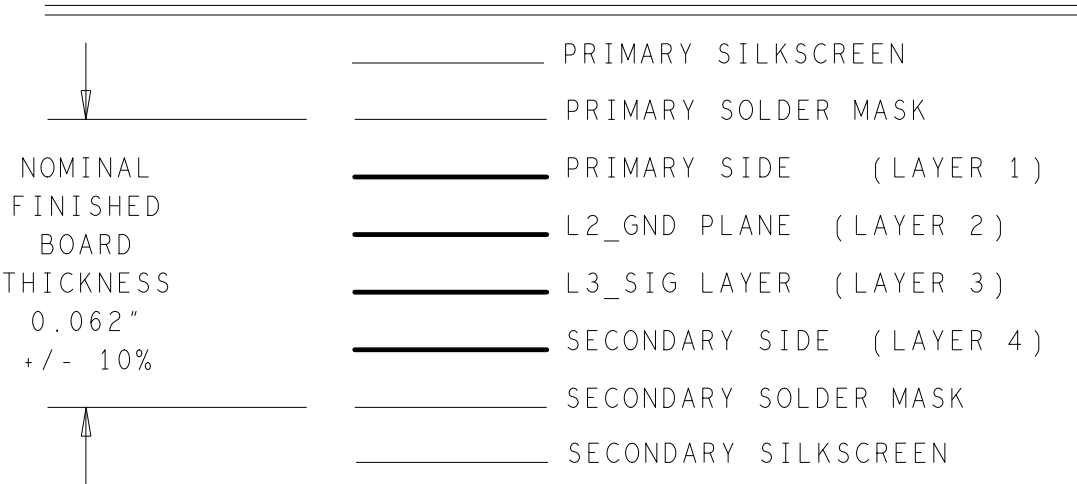
INTENTIONAL SHORTS; IF SUPPLIED DATA INCLUDES A FILE "READ_ME.2", THEN
INTENTIONAL NET SHORTS EXIST. CUSTOMER REVIEW AND APPROVAL
IS REQUIRED IF SUPPLIED DATA REPORTS ANY CONDITION THAT
DOES NOT MATCH "READ_ME.2" FILE PROVIDED.

TEST REQUIREMENTS; 100% NETLIST ELECTRICAL VERIFICATION USING CUSTOMER
SUPPLIED IPC-D-356 NETLIST FOR OPENS AND SHORTS WHEN
"GERBER DATA" IS PROVIDED. THIS VERIFICATION ALSO
REQUIRED FOR "ODB++" DATA PER EMBEDDED NETLIST.

REQUIREMENTS:

- REFER TO IPC-6010 SERIES (LATEST REV.), CLASS 2 FOR
FABRICATION UNLESS OTHERWISE SPECIFIED.
- ACCEPTABILITY PER ANALOG DEVICES, INC. SPECIFICATION TST00115,
(LATEST REVISION.)
- MODIFICATIONS TO THE ARTWORK ARE NOT ALLOWED WITHOUT
WRITTEN AUTHORIZATION.
- HOLE PATTERN TOLERANCES FOR UNDIMENSIONED HOLES SHALL BE
A DIAMETER OF 0.005 INCHES FROM THEIR TRUE POSITION.
- PLATED HOLE WALL THICKNESS SHALL NOT BE LESS THAN 0.001 INCH
MINIMUM AVERAGE, WITH NO READING LESS THAN .0008 BY
CROSS SECTION.
- HOLE DIAMETERS APPLY AFTER PLATING.
- FINISHED CONDUCTOR WIDTHS SHALL NOT BE REDUCED FROM THE
NOMINAL INDICATED ON THE MASTER PATTERN, BY MORE THAN THE
CONDUCTOR THICKNESS.
- MINIMUM DESIGN LINE WIDTH IS .020 INCH.
- MINIMUM DESIGN SPACING IS .008 INCH.
- NON-FUNCTIONAL PAD REMOVAL FROM INNER SIGNAL LAYERS MAY BE
PERFORMED AFTER CUSTOMER APPROVAL.
- IF PAD SIZES PROVIDED ARE NOT LARGE ENOUGH TO MAINTAIN
ANNULAR RING REQUIREMENT, MFR. MAY REQUEST APPROVAL TO
TEAR DROP PADS TO MAINTAIN ANNULAR RING. (AT PAD TO TRACE
INTERSECTION ONLY AND ELECTRICAL INTEGRITY MUST BE MAINTAINED.)
- THIEVING MAY BE ADDED TO COMPENSATE FOR LOW COPPER DENSITY
AREAS ON THIS DESIGN ONLY AFTER REVIEW AND APPROVAL FROM
THE CUSTOMER:
A. THIEVING TO CARD EDGE, FIDUCIALS, NON-PLATED THROUGH HOLES,
ALL OTHER FEATURES TO BE 0.200 INCH MINIMUM.
B. THERE SHALL BE NO THIEVING IN ANY AREAS FREE OF SOLDER
MASK OR INTERNAL COPPER PLANES.
- MFR. TO LEGIBLY ETCH OR STAMP/SCREEN WITH PERMANENT
NON-CONDUCTIVE INK ON SECONDARY SIDE IN A CLEAR AREA
UNLESS OTHERWISE INDICATED;
A. U.L. CODE-FLAMMABILITY RATING D. MFR LOGO
B. DATE CODE (STAMP). E. SUCCESSFUL ELECTRICAL TEST.
C. LOT NUMBER
- REPAIRS PER IPC-7711/21 (LATEST REV.) ARE ALLOWED.
REPAIRS ARE NOT ALLOWED IN ANY AREA DEFINED ON GOLD_PRM AND/OR
GOLD_SEC ARTWORK LAYERS WHEN PROVIDED IN GERBER OR ODB++ DATA.
- THRU VIAS TO BE FILLED WITH SOLDERMASK.

4 LAYER STACKUP



EVALUATION BOARD

PRIMARY SIDE

		WWM DIVISION 804 WOBURN STREET WILMINGTON, MA 01887	
		SIZE	REV
C	FSCM NO 24355	DRAWING NUMBER 09-051144	B
SCALE 1/1		SHEET 2 OF 2	

4

3

2

1