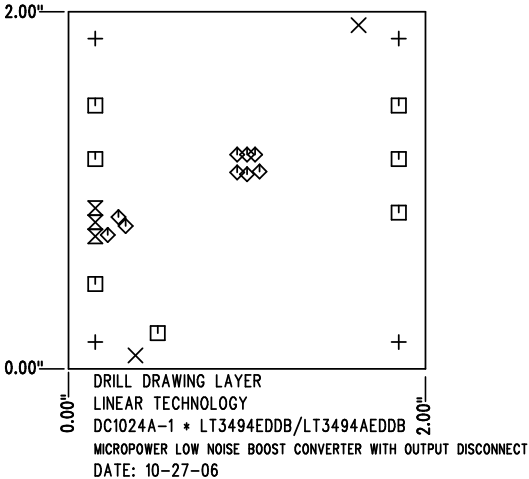
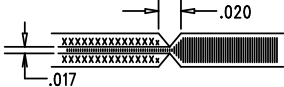


REVISIONS			
REV	DESCRIPTION	APPR	DATE
A-1	FINAL FABRICATION	JR	10-27-06


SIZE	QTY	SYM	PLATED	TOL
0.19	4	+	YES	+/-0.003"
0.07	2	×	NO	+/-0.003"
0.094	7	□	YES	+/-0.003"
0.015	9	◇	YES	+/-0.003"
0.035	3	⊗	YES	+/-0.003"

**NOTES: UNLESS OTHERWISE SPECIFIED**

- FAB PER IPC-A-600
- MATERIAL: EPOXY FIBERGLASS, NEMA GRADE FR-4  
FINISHED THICKNESS TO BE 0.062" +/- 0.006"  
TOTAL OF 4 LAYERS WITH 2 OZ. COPPER ON THE OUTER LAYERS AND 1 OZ. COPPER ON THE INTERNAL LAYERS.  
FLAMABILITY RATING: 94 V-0 MINIMUM .
- FINISH: SMOBC USING LPI BOTH SIDES, COLOR GREEN.  
WHITE TIN IMMERSION (OMIKRON).  
FOR SILKSCREEN: USE WHITE NON-CONDUCTIVE INK.
- DRILLING: DRILL HOLES PER SCHEDULE. ALL PLATED THROUGH HOLES WITH COPPER, 0.001" MIN. / 0.0015" MAX. COPPER PLATE  
ALL HOLE SIZES ARE SPECIFIED AFTER PLATING. HOLE LOCATION TOLERANCES ARE +/-0.01" IN RELATION TO CENTER
- DO NOT ALTER ARTWORK e.g. TO ADD LOGO OR DATE CODE.
- SCORING FOR PANELIZED PCB:



SHOWN FROM COMPONENT SIDE

APPROVALS			 <div> 1630 MCCATHY BLVD  MILPITAS, CA 95035  PH: (408)432-1900  LTC CONFIDENTIAL-  FOR CUSTOMER USE ONLY </div>	
	INIT	DATE		
DRAWN			<b>TITLE: FABRICATION DRAWING</b> MICROPOWER LOW NOISE BOOST CONVERTER WITH OUTPUT DISCONNECT	
CHECK				
DESIGN	KIM T.	10-27-06		
ENGR	JESUS R.	10-27-06		
			<b>SIZE</b> A	<b>REV.</b> A-1
SCALE = NONE			SHT 1 of 1	