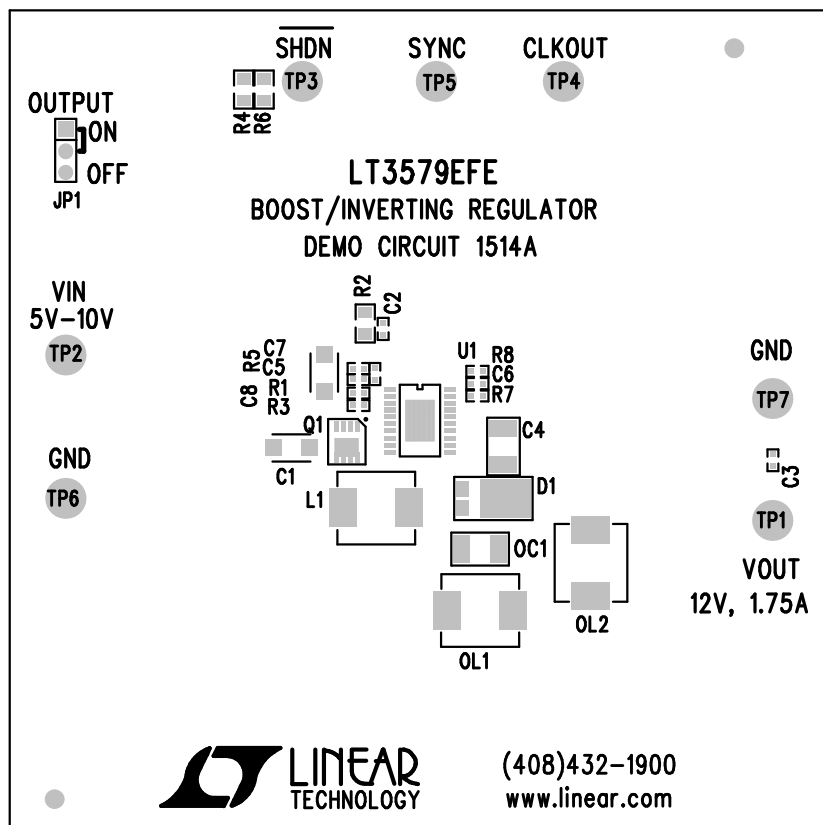


REVISION HISTORY				
ECO	REV	DESCRIPTION	APP. ENG.	DATE
-	3	PRODUCTION	JESUS R.	03-15-10

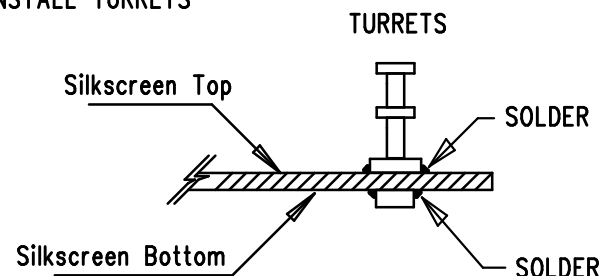



TOP SILKSCREEN

LINEAR TECHNOLOGY
DC1514A-LT3579EFE
BOOST/INVERTING REGULATOR
DATE: 03-15-10

NOTES: UNLESS OTHERWISE SPECIFIED

1. WORKMANSHIP SHALL BE IN ACCORDANCE WITH IPC-A-610.
2. ASSEMBLY PROCESS SHALL INCLUDE: REFLOW SOLDER TOP SIDE SMD.
3. PARTS TO OMIT WILL BE SPECIFIED ON THE BILLS OF MATERIAL. LOCATIONS OF OMITTED PARTS SHALL BE FREE OF SOLDER. MASK THE SOLDER STENCIL WHERE SMT PARTS ARE OMITTED.
4. INSTALL SHUNTS AS SHOWN ON ASSY DRAWING.
5. DEPANELIZE BOARDS AFTER ASSEMBLY AND ROUTE-OUT THE BREAKOUT TABS ON FOUR SIDES OF THE BOARD EDGE.
6. DO NOT APPLY ANY KIND OF ASSEMBLY STAMP OR QA STAMP TO ANY BOARD.
7. INSTALL TURRETS



APPROVALS		 <div>1630 MCCARTHY BLVD MILPITAS, CA 95035 PH: (408)432-1900 www.linear.com LTC CONFIDENTIAL- FOR CUSTOMER USE ONLY</div>	
PCB DES.	A.K.		
APP ENG.	JESUS R.		
		TITLE: TOP ASSEMBLY DRAWING	
		BOOST/INVERTING REGULATOR	
SIZE N/A	IC NO. LT3579EFE DEMO CIRCUIT 1514A	REV. 3	
SCALE = NONE		FILENAME: DC1514A-3.PCB	SHT 1 OF 1