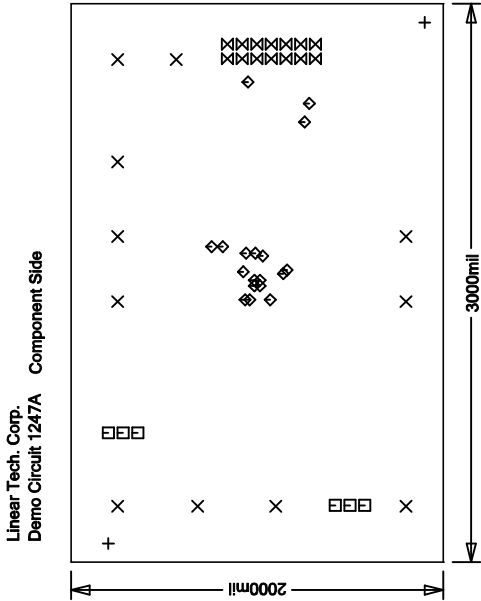


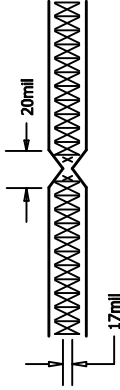
REVISIONS			
REV		APPR	DATE



NOTES : Unless Otherwise Specified


1. FAB PER IPC-A-600.
2. MATERIAL: EPOXY FIBERGLASS, NEMA GRADE FR-4.
2 OZ. COPPER FINISH ON EXTERNAL LAYERS.
1 OZ. COPPER FINISH ON INTERNAL LAYERS.
THICKNESS .062 +/- .006 TOTAL OF 4 LAYERS.
FLAMMABILITY RATING: 94 V-0 MINIMUM .
0.00 ARE PRIMARY DATUMS.
3. SIZE: DIMENSIONS SHOWN AND TOLERANCES +/- 0.010
4. DRILLING: DRILL HOLES PER SCHEDULE. PLATE THROUGH HOLES WITH COPPER, .001 INCH THICK MIN. ALL HOLE SIZES ARE SPECIFIED AFTER PLATING.
HOLE LOCATION TOLERANCES ARE +/- .3MIL INCH IN RELATION TO CENTER
5. FINISH: SMOBC USING LPT BOTH SIDES COLOR GREEN.
GOLD IMMERSION BOTH SIDES.
6. SILKSCREEN : USING WHITE NON-CONDUCTIVE EPOXY INK.
7. DO NOT ALTER ARTWORK TO ADD LOGO OR DATE CODE BUT MAY MODIFY PAD SIZE TO MEET END FINISH.
8. PCB's SHOULD BE RoHS COMPLIANT.

9. SCORING:



SIZE	QTY	SYM	PLATED	TOL
70	2	+	NO	+/-3Mil
94	11	X	YES	+/-3Mil
31	6	□	YES	+/-3Mil
10	18	◇	YES	+/-3Mil
35	14	⊗	YES	+/-3Mil

Fabrication Drawing

APPROVALS			 LINEAR TECHNOLOGY		1830 McCarthy Blvd. Milpitas, CA 95035 PH: (408)432-1900	
	DRAWN	INIT	DATE	TITLE: LT3582EUD i ² C Programmable Boost & Single Inductor Inverting DC/DC Converters with OTP		
	CHECK					
	DESIGN	Rudy6				
	ENGR	JFoshee				
				FD	Demo Circuit 1247A	REV. 2
				DES-23xxxx		SHT 1 of 1
SCALE = NONE						