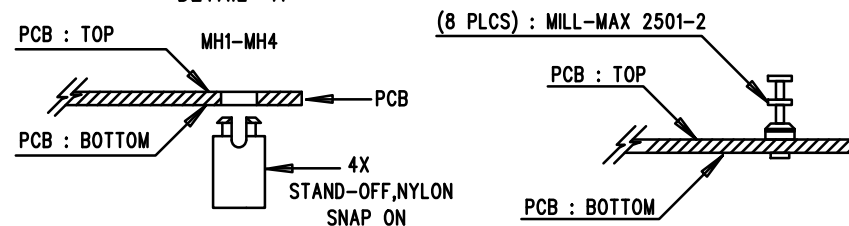


REVISION HISTORY				
ECO	REV	DESCRIPTION	APPR	DATE
-	4	PRODUCTION FAB	K. SZOLUSHA	12-18-10

NOTES: UNLESS OTHERWISE SPECIFIED

1. WORKMANSHIP SHALL BE IN ACCORDANCE WITH IPC-A-610.
2. ASSEMBLY PROCESS SHALL INCLUDE: REFLOW SOLDER TOP SIDE SMD. MAXIMUM SOLDER TEMPERATURE IS 240 DEGREES CELCIUS.
3. PARTS TO OMIT WILL BE SPECIFIED ON THE BILL OF MATERIALS. LOCATIONS OF OMITTED PARTS SHALL BE FREE OF SOLDER. MASK THE SOLDER STENCIL WHERE SMT PARTS ARE OMITTED.
4. INSTALL SHUNTS AS SHOWN ON ASSY DRAWING.
5. DEPANELIZE BOARDS AFTER ASSEMBLY AND ROUTE-OUT THE BREAKOUT TABS ON FOUR SIDES OF THE BOARD EDGE.
6. INSTALL TURRETS AND STAND-OFFS AS SHOWN BELOW:

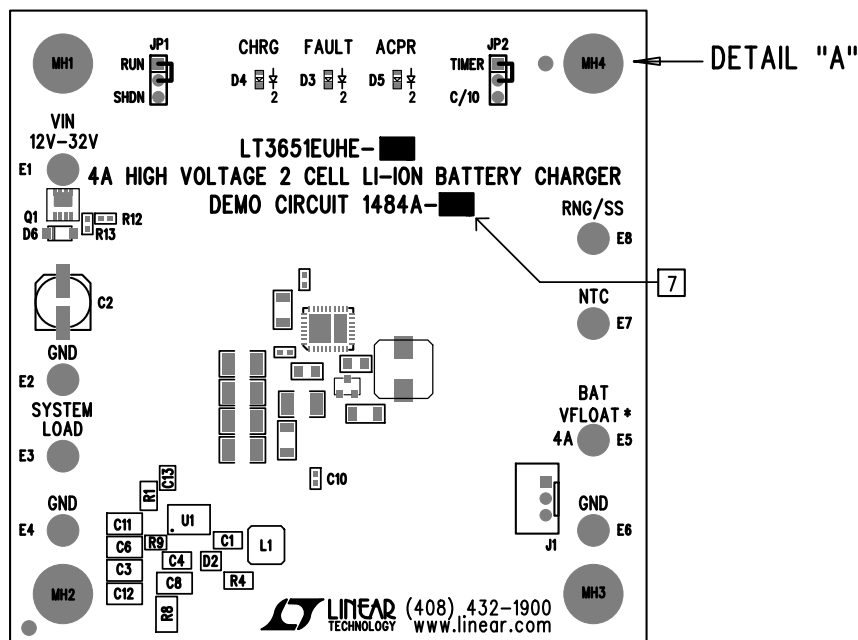
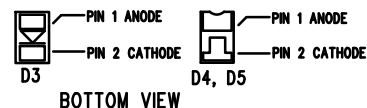
DETAIL "A"




7. MARK EACH ASSEMBLY TYPE WITH BLACK PERMANENT MARKER AS SHOWN IN TABLE BELOW:

ASSY	U1	VFLOAT
-A	LT3651EUHE-8.4	8.4V
-B	LT3651EUHE-8.2	8.2V

8. INSTALL LED'S D3, D4 AND D5 AS SHOWN:



APPROVALS		 LINEAR TECHNOLOGY 1630 MCCARTHY BLVD MILPITAS, CA 95035 PH: (408)432-1900 LTC CONFIDENTIAL- FOR CUSTOMER USE ONLY	
NAME			
PCB DES. NC		TITLE: TOP ASSEMBLY DRAWING: 4A HIGH VOLTAGE 2 CELL LI-ION BATTERY CHARGER	
ENG. K. SZOLUSHA			
		SIZE	IC NO. LT3651EUHE-8.4/-8.2
		N/A	REV. 4
		DEMO CIRCUIT 1484A-A/B	
SCALE = NONE		FILENAME: DC1484A-4.PCB SHT 1 of 2	