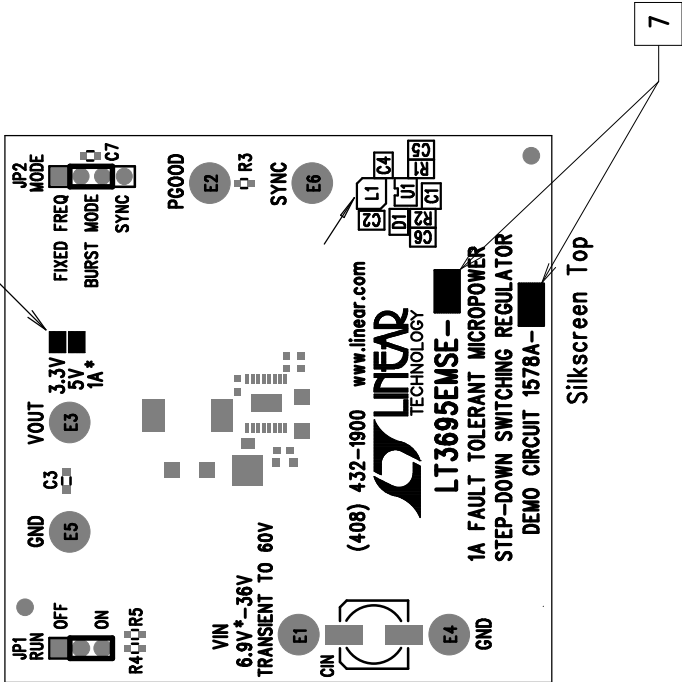


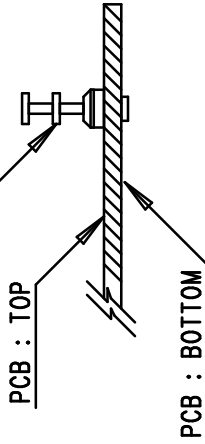
7 CHECK PER ASSY TYPE TABLE.



NOTES: UNLESS OTHERWISE SPECIFIED

1. WORKMANSHIP SHALL BE IN ACCORDANCE WITH IPC-A-610.
2. ASSEMBLY PROCESS SHALL INCLUDE: REFLOW SOLDER TOP SIDE SMD.
3. PARTS TO OMIT WILL BE SPECIFIED ON THE BILLS OF MATERIAL. LOCATIONS OF OMITTED PARTS SHALL BE FREE OF SOLDER. MASK THE SOLDER STENCIL WHERE SMT PARTS ARE OMITTED.
4. INSTALL SHUNTS AS SHOWN ON ASSY DRAWING.
5. DEPANELIZE BOARDS AFTER ASSEMBLY AND ROUTE-OUT THE BREAKOUT TABS ON FOUR SIDES OF THE BOARD EDGE.
6. DO NOT APPLY ANY KIND OF ASSEMBLY STAMP OR QA STAMP TO ANY BOARD.

TURRETS : MILL-MAX 2501-2



7. MARK EACH LTC PART NUMBER AND ASSEMBLY TYPE WITH BLACK PERMANENT MARKER AS SHOWN IN TABLE BELOW:

ASSY	U1	VOUT
DC1578A-A	LT3695EMSE-3.3	3.3V
DC1578A-B	LT3695EMSE-5	5V

1630 MCCARTHY BLVD
MILPITAS, CA 95035
PH: (408)432-1900
www.linear.com
LTC CONFIDENTIAL -
FOR CUSTOMER USE ONLY



TITLE: TOP ASSEMBLY DRAWING

1A FAULT TOLERANT MICROPOWER
STEP-DOWN SWITCHING REGULATOR

SIZE	IC NO.	LT3695EMSE-3.3/5	REV.
N/A	1578A	1	1

FILENAME: 1578A.PCB

SHT 1 OF 1

APPROVALS

PCB DES.	JUNE W.
APP ENG.	WALKER B.
SCALE = NONE	