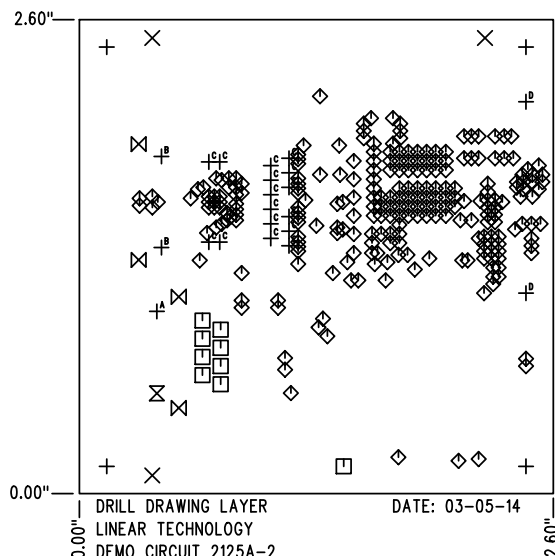


SHOWN FROM TOP SIDE



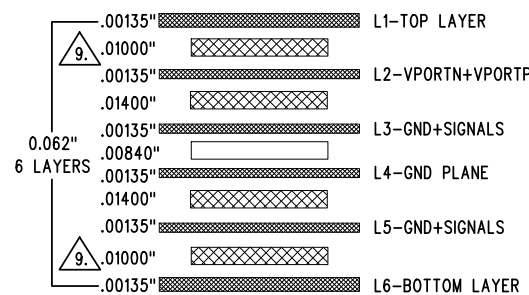
DRILL DRAWING LAYER
LINEAR TECHNOLOGY
DEMO CIRCUIT 2125A-2
LT4275AIDD, LT4321IUF, LTM8027EV
SMALL-SIZED PoE PD WITH POWER SUPPLY uMODULE

SIZE	QTY	SYM	PLATED	TOL
0.19	4	+	NO	+/-0.003"
0.07	3	X	NO	+/-0.003"
0.035	9	□	YES	+/-0.003"
0.01	251	◇	YES	+/-0.003"
0.128	1	⊗	YES	+/-0.003"
0.065	4	⊗	YES	+/-0.003"
0.128	1	+ ^A	NO	+/-0.003"
0.125	2	+ ^B	NO	+/-0.003"
0.036	16	+ ^C	YES	+/-0.003"
0.094	2	+ ^D	YES	+/-0.003"

LAYER STRUCTURE

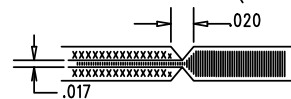
REVISION HISTORY

ECO	REV	DESCRIPTION	APP. ENG.	DATE
-	2	2ND PROTOTYPE	RYAN H.	03-05-14



NOTES: UNLESS OTHERWISE SPECIFIED

- FAB PER IPC-A-600.
- MATERIAL: -LEAD FREE ASSEMBLY COMPLIANT, ISOLA FR-370HR OR EQUIVALENT.
-FINISHED THICKNESS TO BE 0.062" +/- .005"
-TOTAL OF 6 LAYERS WITH 1 OZ. CU ON ALL LAYERS.
-FLAMMABILITY RATING: 94 V-0 MINIMUM.
- SIZE: CUT TO DIMENSIONS AND TOLERANCES SHOWN.
0.00" ARE PRIMARY DATUMS.
- DRILLING: -DRILL HOLES PER SCHEDULE. PLATE THROUGH HOLES WITH COPPER, 0.001" THICK MIN.
-ALL HOLE SIZES ARE SPECIFIED AFTER PLATING.
-HOLE LOCATION TOLERANCES ARE +/-0.003" IN RELATION TO CENTER
- FINISH: -SMOBC USING LPI BOTH SIDES, COLOR GREEN.
-GOLD IMMERSION BOTH SIDES.
-FOR SILKSCREENS: USE WHITE NON-CONDUCTIVE INK.
- DO NOT ALTER ARTWORK e.g. TO ADD LOGO OR DATE CODE.
PAD SIZE CAN BE MODIFIED TO MEET END FINISH.
- PCBS ARE TO BE RoHS COMPLIANT.
- SCORING FOR PANELIZED PCB (PRODUCTION FAB ONLY):



- SUBJECT TO CHANGE BY MANUFACTURER, +/-10%, DEPENDING ON DIELECTRIC CONSTANT DEVIATIONS. PLEASE CONSULT LTC.
- U3 HAS SPECIAL PAD SIZES FOR TOP MASK AND TOP PASTE LAYERS.
DO NOT MODIFY ANY PAD SIZE ON U3.

UNLESS OTHERWISE SPECIFIED		APPROVALS			
DIMENSIONS ARE IN INCHES		PCB DES.	KIM T.		
TOLERANCES:		APP ENG.	RYAN H.	TITLE: FABRICATION DRAWING	
0.XX" = ±0.0"				SMALL-SIZED PoE PD WITH POWER SUPPLY uMODULE	
0.XXX" = ±0.005"				SIZE IC NO. LT4275AIDD, LT4321IUF, LTM8027EV	
INTERPRET DIM AND TOL PER ASME Y14.5M-1994				DEMO CIRCUIT 2125A	
THIRD ANGLE PROJECTION				REV 2	
		SCALE = NONE		FILENAME: DC2125A-2.PCB	
				SHT 1 OF 1	

1630 MCCARTHY BLVD
MILPITAS, CA 95035
PH: (408)432-1900
www.linear.com
LTC CONFIDENTIAL-
FOR CUSTOMER USE ONLY