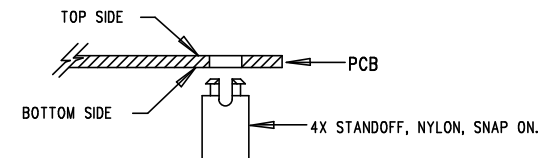


REVISION HISTORY				
ECO	REV	DESCRIPTION	APP. ENG.	DATE
-	4	PRODUCTION	KAUNG H.	11-18-14

NOTES: UNLESS OTHERWISE SPECIFIED

1. WORKMANSHIP SHALL BE IN ACCORDANCE WITH IPC-A-610.
2. ASSEMBLY PROCESS SHALL INCLUDE: REFLOW SOLDER TOP SIDE SMD. MAXIMUM SOLDER TEMPERATURE IS 240 DEGREES CELSIUS.
3. PARTS TO OMIT WILL BE SPECIFIED ON THE BILL OF MATERIALS. LOCATIONS OF OMITTED PARTS SHALL BE FREE OF SOLDER. MASK THE SOLDER STENCIL WHERE SMT PARTS ARE OMITTED.
4. DEPANELIZE BOARDS AFTER ASSEMBLY AND ROUTE-OUT THE BREAKOUT TABS ON FOUR SIDES OF THE BOARD EDGE.
5. DO NOT APPLY ANY KIND OF ASSEMBLY STAMP OR QA STAMP TO ANY BOARD.
6. INSTALL 4 STANDOFFS AT 4 LOCATIONS AS SHOWN BELOW:



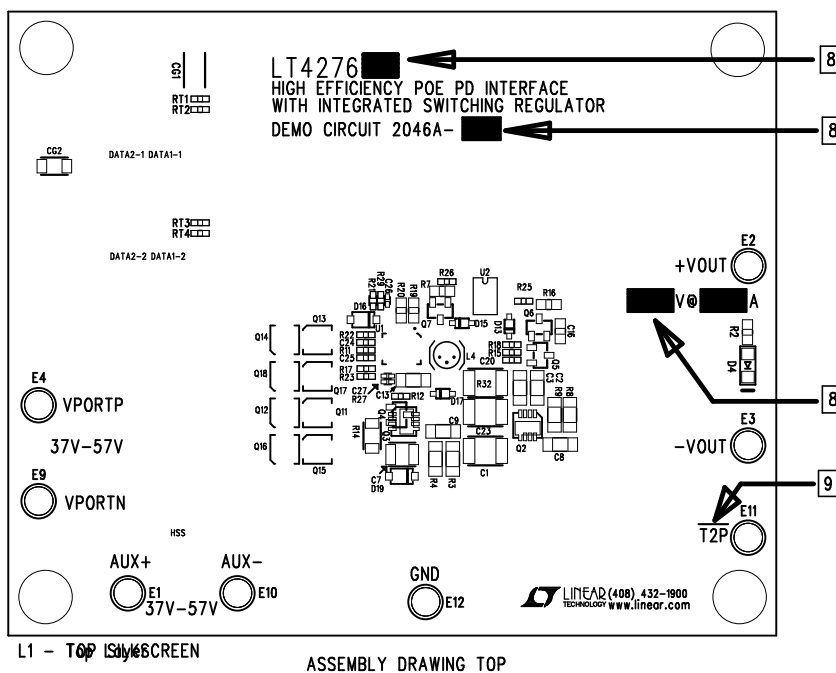
7. INSTALL D4 AS SHOWN BELOW:




8. MARK EACH ASSEMBLY TYPE, OUTPUT VOLTAGE AND CURRENT, AND U1 SUFFIX IN THE WHITE BLOCK AREAS WITH BLACK PERMANENT MARKER AS SHOWN IN TABLE BELOW:

ASSY TYPE	VOLTAGE	CURRENT	U1
-A	3.3V	6.8A	LT4276B
-B	5V	4.7A	LT4276B
-C	12V	1.90A	LT4276B
-D	24V	0.95A	LT4276B
-E	5V	7A	LT4276A
-F	5V	2.3A	LT4276C

9. DRAW A LINE ON TOP OF "T2P" WITH A FINE TIP WHITE MARKER AS INDICATED BY THE ARROW.



APPROVALS			
PCB DES.	KAUNG H.		
APP ENG.	KAUNG H.	TITLE: TOP ASSEMBLY DRAWING HIGH EFFICIENCY POE PD INTERFACE WITH INTEGRATED SWITCHING REGULATOR	
		SIZE	IC NO.
		N/A	LT4275AIUF
		DEMO CIRCUIT 2046A	
		REV. 4	
SCALE = NONE		FILENAME: DC2046A-1.PCB	
		SHT 1 OF 2	

1630 MCCARTHY BLVD
MILPITAS, CA 95035
PH: (408)432-1900
www.linear.com
LTC CONFIDENTIAL-
FOR CUSTOMER USE ONLY