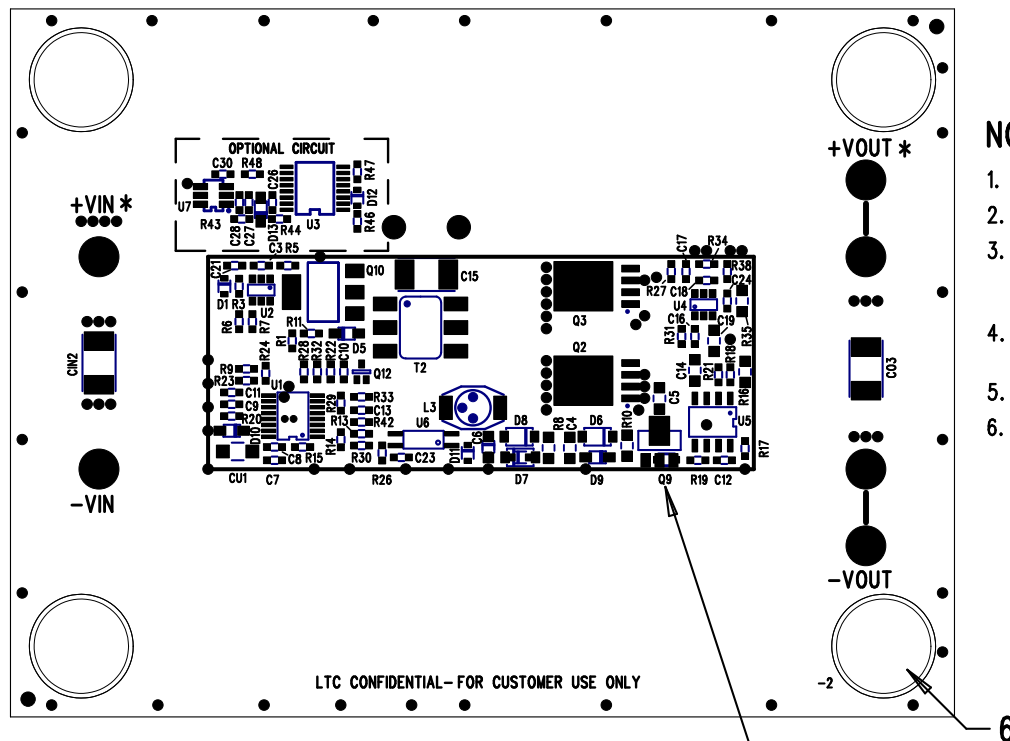
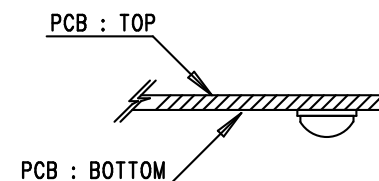


REVISIONS			
REV	DESCRIPTION	APPR	DATE
A-2	3RD PROTOTYPE	GP	11-29-06



NOTES: UNLESS OTHERWISE SPECIFIED

1. WORKMANSHIP SHALL BE IN ACCORDANCE WITH IPC-A-610.
2. NO SHUNT.
3. PARTS TO OMIT WILL BE SPECIFIED ON THE BILLS OF MATERIAL. LOCATIONS OF OMITTED PARTS SHALL BE FREE OF SOLDER. MASK THE SOLDER STENCIL WHERE SMT PARTS ARE OMITTED.
4. DEPANELIZE BOARDS AFTER ASSEMBLY AND ROUTE-OUT THE BREAKOUT TABS ON FOUR SIDES OF THE BOARD EDGE.
5. ASSY PROCESSES SHALL INCLUDE: REFLOW SOLDER TOP SIDE SMD.
6. INSTALL 4 HARDWARES (BUMPON SJ-5303) AT 4 CORNERS AS SHOWN BELOW:



INSTALL Q9 AS 0 OHMS, 0603 RESISTOR
ON Q9 PIN 1 AND 2 OF "-D" VERSION

APPROVALS

	INIT	DATE
DRAWN		
CHECK		
DESIGN	KIM T.	11-29-06
ENGR	GORAN P.	11-29-06



1630 MCCATHY BLVD
MILPITAS, CA 95035
PH: (408)432-1900
LTC CONFIDENTIAL-
FOR CUSTOMER USE ONLY

TITLE: BOTTOM ASSEMBLY DRAWING
ISOLATED DC/DC POWER CONVERTER

SIZE	REV.
A	A-2

SCALE = NONE

SHT 2 of 2