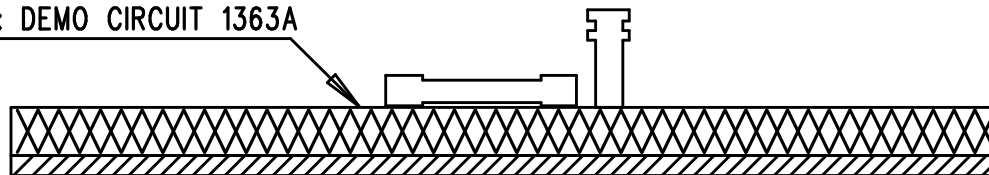


PCB : DEMO CIRCUIT 1363A

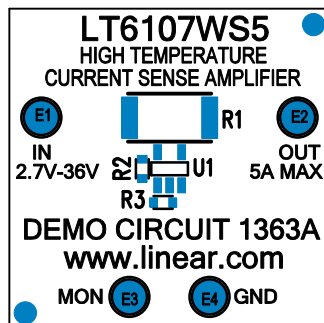


PCB : BOTTOM

3M/Scotch MMM11P (1" Foam Mounting Square Double Sided)

DO NOT INSTALL

TOP SILKSCREEN
 LINEAR TECHNOLOGY
 DC1363A-LT6107WS5
 HIGH TEMPERATURE CURRENT SENSE AMPLIFIER
 DATE: 11-27-07



NOTES: UNLESS OTHERWISE SPECIFIED

1. WORKMANSHIP SHALL BE IN ACCORDANCE WITH IPC-A-610.
2. NO SHUNT.
3. ASSEMBLY PROCESS SHALL INCLUDE: REFLOW SOLDER TOP SIDE SMD.

APPROVALS

	INIT	DATE
DRAWN		
CHECK		
DESIGN	KIM T.	11-27-07
ENGR	JON M.	11-27-07

SCALE = NONE



1630 MCCARTHY BLVD
 MILPITAS, CA 95035
 PH: (408)432-1900
 LTC CONFIDENTIAL-
 FOR CUSTOMER USE ONLY

TITLE: TOP ASSEMBLY DRAWING
 HIGH TEMPERATURE CURRENT SENSE AMPLIFIER

SIZE A	DEMO DC1363A-LT6107WS5	REV. A
-----------	---------------------------	-----------

SHT 1 of 1

REVISIONS

REV	DESCRIPTION	APPR	DATE
A	1ST PROTOTYPE	JON M.	11-27-07