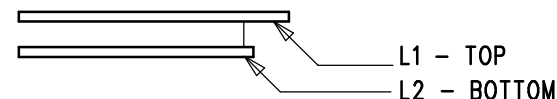


REVISION HISTORY				
ECO	REV	DESCRIPTION	APP. ENG.	DATE
-	2	PRODUCTION	CUYLER L.	03-12-14

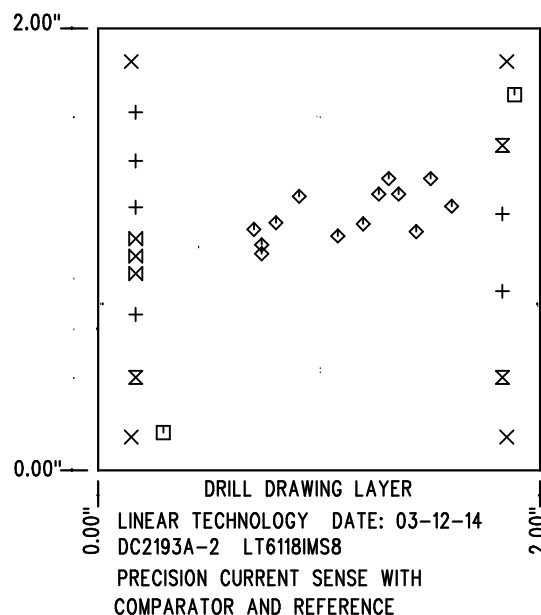
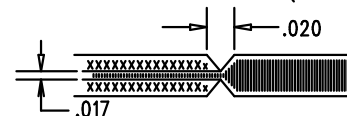
LAYER STRUCTURE



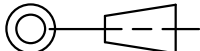

NOTES: UNLESS OTHERWISE SPECIFIED

- FAB PER IPC-A-600.
- MATERIAL: -LEAD FREE ASSEMBLY COMPLIANT, ISOLA FR-370HR OR EQUIVALENT.
-FINISHED THICKNESS TO BE 0.062" +/- .005"
-TOTAL OF 2 LAYERS WITH 2 OZ. CU ON THE OUTER LAYERS

-FLAMMABILITY RATING: 94 V-0 MINIMUM.
- SIZE: CUT TO DIMENSIONS AND TOLERANCES SHOWN.
0.00" ARE PRIMARY DATUMS.
- DRILLING: -DRILL HOLES PER SCHEDULE. PLATE THROUGH HOLES WITH COPPER, 0.001" THICK MIN.
-ALL HOLE SIZES ARE SPECIFIED AFTER PLATING.
-HOLE LOCATION TOLERANCES ARE +/-0.003" IN RELATION TO CENTER
- FINISH: -SMOBC USING LPI BOTH SIDES, COLOR GREEN.
-GOLD IMMERSION BOTH SIDES.
-FOR SILKSCREENS: USE WHITE NON-CONDUCTIVE INK.
- DO NOT ALTER ARTWORK e.g. TO ADD LOGO OR DATE CODE.
PAD SIZE CAN BE MODIFIED TO MEET END FINISH.
- PCBS ARE TO BE RoHS COMPLIANT.
- SCORING FOR PANELIZED PCB (PRODUCTION FAB ONLY):



SIZE	QTY	SYM	PLATED	TOL
0.066	6	+	YES	+/-0.003
0.187	4	X	NO	+/-0.003
0.07	2	□	NO	+/-0.003
0.015	13	◇	YES	+/-0.003
0.096	3	⊗	YES	+/-0.003
0.035	3	⊗	YES	+/-0.003

UNLESS OTHERWISE SPECIFIED DIMENSIONS ARE IN INCHES TOLERANCES: 0.XX" = ±0.01" 0.XXX" = ±0.005" INTERPRET DIM AND TOL PER ASME Y14.5M-1994 THIRD ANGLE PROJECTION 	APPROVALS		 LINEAR TECHNOLOGY <div>1630 MCCARTHY BLVD MILPITAS, CA 95035 PH: (408)432-1900 www.linear.com LTC CONFIDENTIAL- FOR CUSTOMER USE ONLY</div>		
	PCB DES.	AK			
	APP ENG.	CUYLER L.	TITLE: FABRICATION DRAWING PRECISION CURRENT SENSE WITH COMPARATOR AND REFERENCE		
			SIZE N/A	IC NO. LT6118IMS8 DEMO CIRCUIT 2193A	REV 2
	SCALE = NONE		FILENAME: DC2193A-2.PCB		SHT 1 OF 1