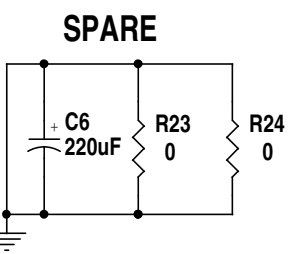
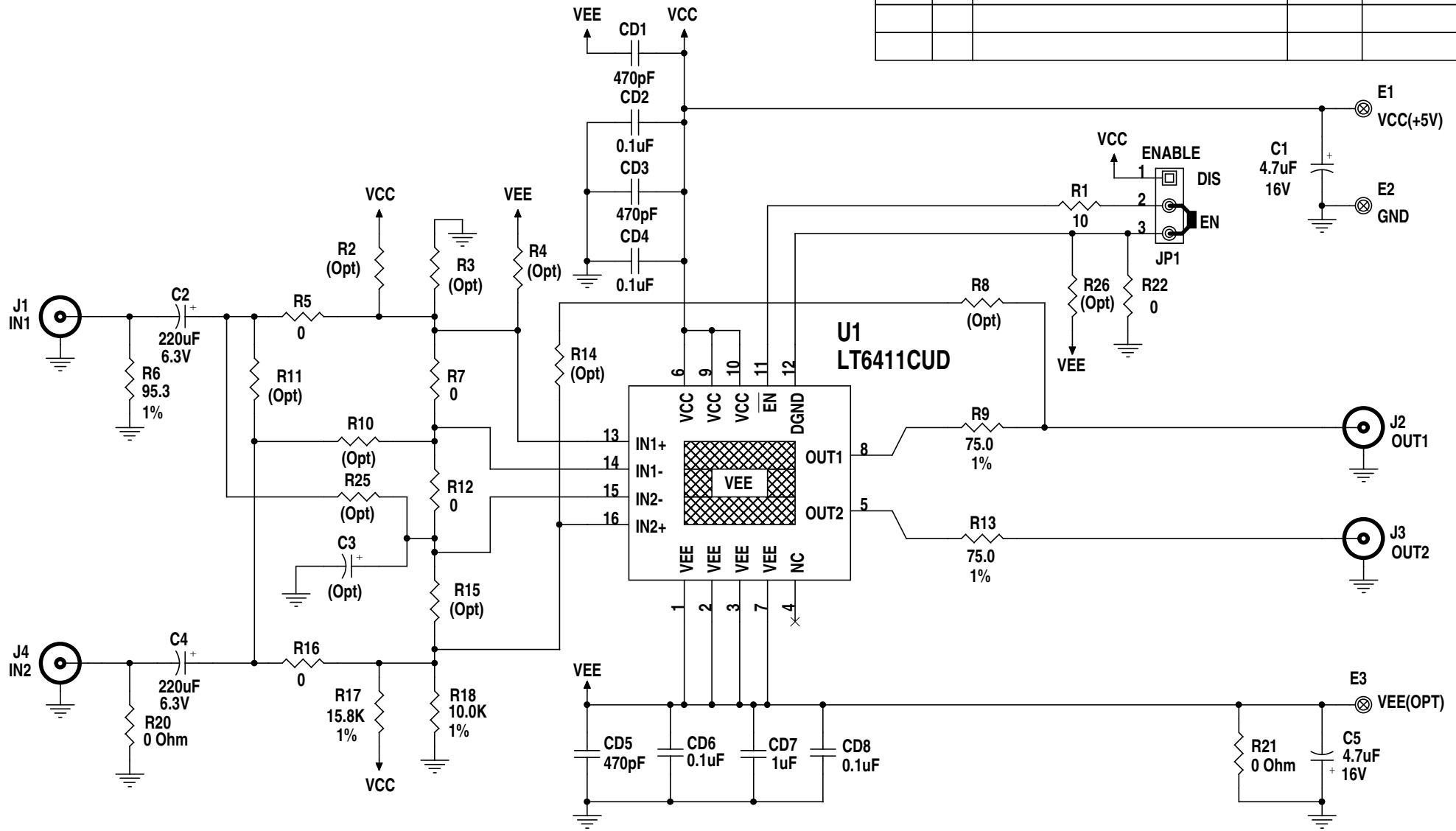


REVISION HISTORY				
ECO	REV	DESCRIPTION	DATE	APPROVED
-	0	1st PROTOTYPE	<DATE>	<APPROVED>



C:\MY DOCUMENTS\PADS PROJECTS\CAM\1108A\1108A\_REV1.DSN

This circuit is proprietary to Linear Technology and supplied for use with Linear Technology parts.

**Customer Notice:** Linear Technology has made a best effort to design a circuit that meets customer-supplied specifications; however, it remains the customers responsibility to verify proper and reliable operation in the actual application. Component substitution and printed circuit board layout may significantly affect circuit performance or reliability. Contact Linear Applications Engineering for assistance.

APPROVALS		LINEAR TECHNOLOGY CORPORATION	
DRAWN: Rudy Bautista		1630 McCARTHY BLVD	
ENGINEER: C.Peil		MILPITAS, CA. 95035	
APPROVED:		(408)432-1900	
CHECKED:		(408)434-0507 (FAX)	
		www.linear.com	
		LTC Confidential -	
		For Customer Use Only	
<b>Differential Driver/Receiver</b>			
Title		<b>Demo Circuit 1108A</b>	
Size	Document Number	Rev 1	
Date:	Thursday, January 11, 2007	Sheet	1 of 1