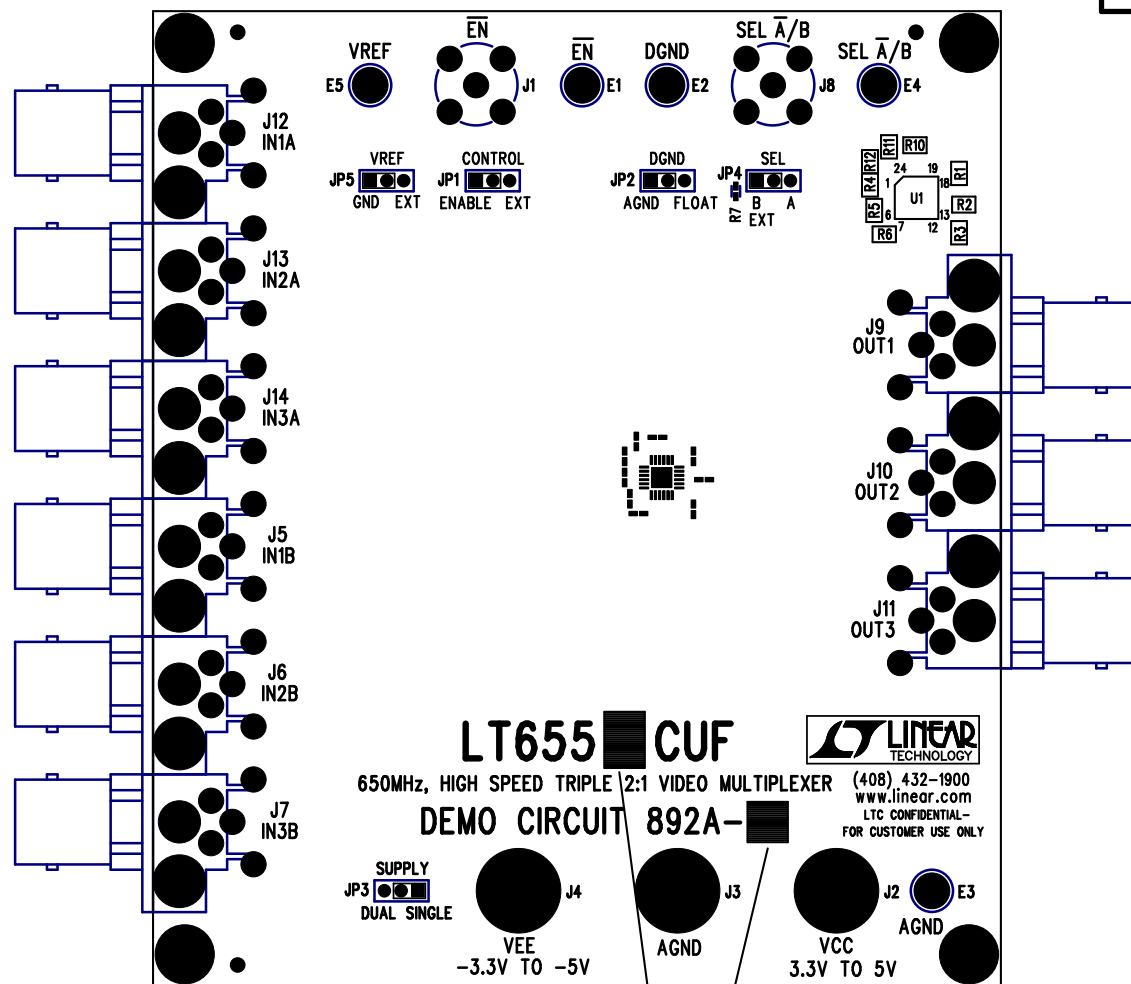
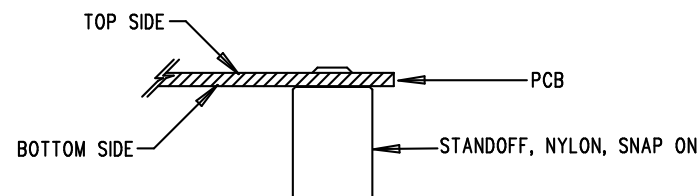


REVISIONS			
REV	DESCRIPTION	APPR	DATE
A	PROTOTYPE RELEASE		




NOTES: UNLESS OTHERWISE SPECIFIED

1. WORKMANSHIP SHALL BE IN ACCORDANCE WITH IPC-A-610.
2. INSTALL SHUNT ON JP1-JP5 PIN 1 AND 2.
3. PARTS TO OMIT WILL BE SPECIFIED ON THE BILLS OF MATERIAL. LOCATIONS OF OMITTED PARTS SHALL BE FREE OF SOLDER. MASK THE SOLDER STENCIL WHERE SMT PARTS ARE OMITTED.
4. DEPANELIZE BOARDS AFTER ASSEMBLY AND ROUTE-OUT THE BREAKOUT TABS ON FOUR SIDES OF THE BOARD EDGE.
5. ASSY PROCESSES SHALL INCLUDE: REFLOW SOLDER TOP SIDE SMD.
6. INSTALL 4 STANDOFFS AT 4 CORNERS AS SHOWN BELOW:



7. FOR BOARD ASSEMBLY:

DC892A-A	LT6555CUF
DC892A-B	LT6556CUF

APPROVALS			 1630 McCarthy Blvd. Milpitas, CA 95035 PH: (408)432-1900	
	INIT	DATE		
DRAWN			TITLE: TOP ASSEMBLY DRAWING 650MHz, HIGH SPEED TRIPLE 2:1 VIDEO MULTIPLEXER	
CHECK				
DESIGN	KIM T.	06-29-05		
ENGR	JON M.	06-29-05		
			SIZE A	REV. A
SCALE = NONE			DES- 0000	SHT 1 of 2