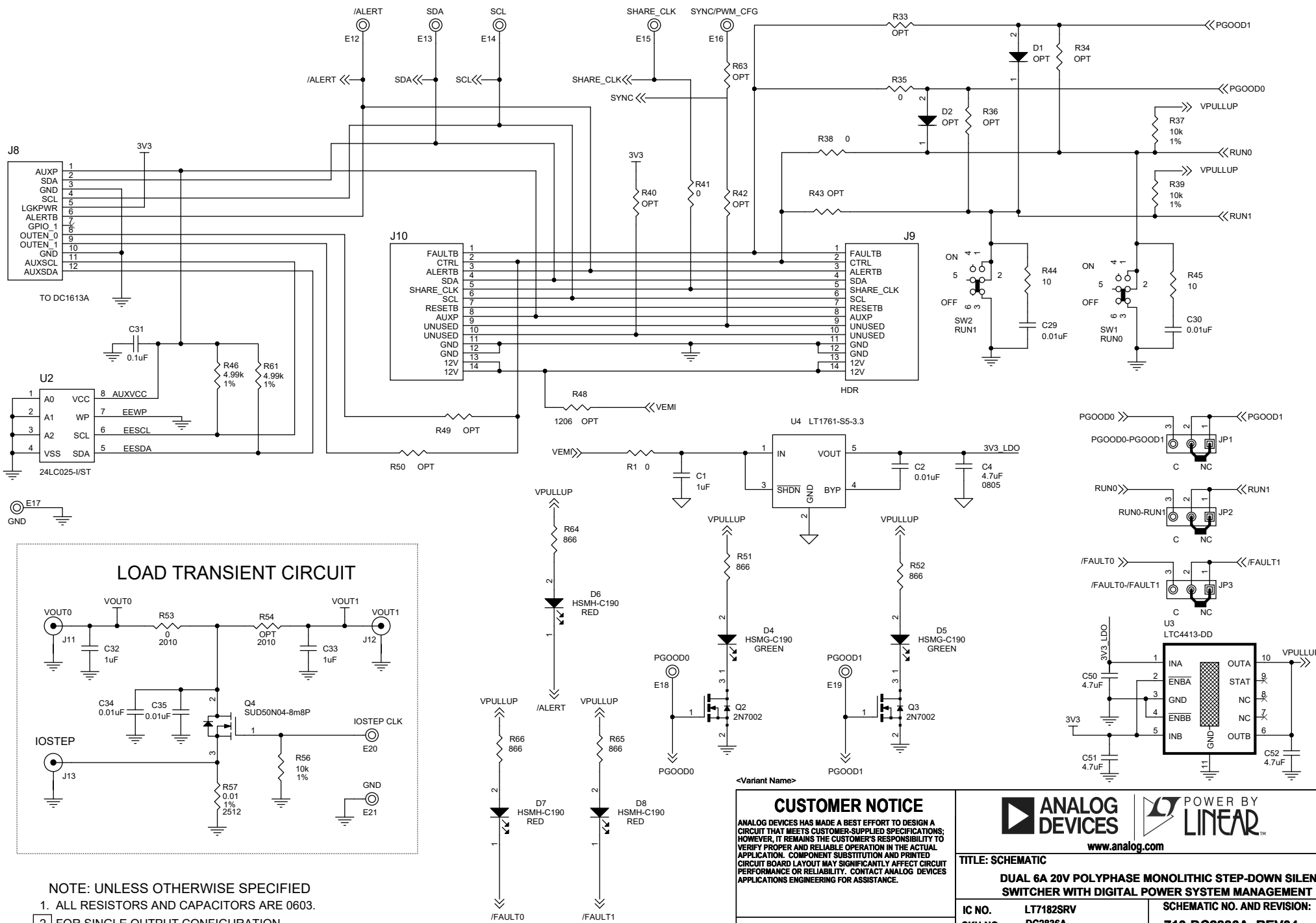


NOTE: UNLESS OTHERWISE SPECIFIED
 1. ALL RESISTORS AND CAPACITORS ARE 0603.
 2 FOR SINGLE OUTPUT CONFIGURATION.

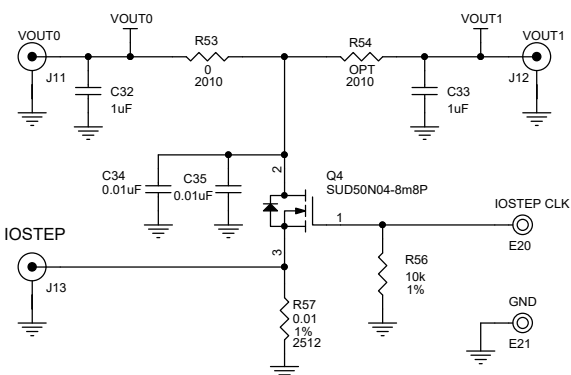
<Variant Name>

CUSTOMER NOTICE		ANALOG DEVICES POWER BY LINEAR	
ANALOG DEVICES HAS MADE A BEST EFFORT TO DESIGN A CIRCUIT THAT MEETS CUSTOMER-SUPPLIED SPECIFICATIONS; HOWEVER, IT REMAINS THE CUSTOMER'S RESPONSIBILITY TO VERIFY PROPER AND RELIABLE OPERATION IN THE ACTUAL APPLICATION. COMPONENT SUBSTITUTION AND PRINTED CIRCUIT BOARD LAYOUT MAY SIGNIFICANTLY AFFECT CIRCUIT PERFORMANCE OR RELIABILITY. CONTACT ANALOG DEVICES APPLICATIONS ENGINEERING FOR ASSISTANCE.			
www.analog.com		www.analog.com	
TITLE: SCHEMATIC			
DUAL 6A 20V POLYPHASE MONOLITHIC STEP-DOWN SILENT SWITCHER WITH DIGITAL POWER SYSTEM MANAGEMENT			
IC NO. LT7182SRV		SCHEMATIC NO. AND REVISION:	
SKU NO. DC2836A		710-DC2836A_REV04	
THIS CIRCUIT IS PROPRIETARY TO ANALOG DEVICES AND SUPPLIED FOR USE WITH ANALOG DEVICES PARTS.		SIZE: N/A	DATE: Thursday, September 02, 2021
		SHEET 1	OF 2

ALL PARTS ON THIS PAGE ARE FOR DEMO ONLY, NOT NEEDED IN CUSTOMER DESIGN



LOAD TRANSIENT CIRCUIT



NOTE: UNLESS OTHERWISE SPECIFIED
 1. ALL RESISTORS AND CAPACITORS ARE 0603.
 2. FOR SINGLE OUTPUT CONFIGURATION.

CUSTOMER NOTICE
 ANALOG DEVICES HAS MADE A BEST EFFORT TO DESIGN A CIRCUIT THAT MEETS CUSTOMER-SUPPLIED SPECIFICATIONS; HOWEVER, IT REMAINS THE CUSTOMER'S RESPONSIBILITY TO VERIFY PROPER AND RELIABLE OPERATION IN THE ACTUAL APPLICATION. COMPONENT SUBSTITUTION AND PRINTED CIRCUIT BOARD LAYOUT MAY SIGNIFICANTLY AFFECT CIRCUIT PERFORMANCE OR RELIABILITY. CONTACT ANALOG DEVICES APPLICATIONS ENGINEERING FOR ASSISTANCE.

THIS CIRCUIT IS PROPRIETARY TO ANALOG DEVICES AND SUPPLIED FOR USE WITH ANALOG DEVICES PARTS.

TITLE: SCHEMATIC			
DUAL 6A 20V POLYPHASE MONOLITHIC STEP-DOWN SILENT CIRCUIT BOARD WITH DIGITAL POWER SYSTEM MANAGEMENT			
IC NO. LT7182SRV	SKU NO. DC2836A		SCHEMATIC NO. AND REVISION: 710-DC2836A_REV04
SIZE: N/A	DATE: Thursday, September 02, 2021	SHEET 2 OF 2	