

**LT8350**
**40V<sub>IN</sub>, 18V<sub>OUT</sub>, 6A Synchronous  
Buck-Boost Silent Switcher®**

## DESCRIPTION

Evaluation circuit EVAL-LT8350-AZ is a 40V synchronous buck-boost converter featuring the **LT®8350**. It drives up to 2.5A load at 12V output when  $V_{IN}$  is between 9V and 40V and will run down to  $3V_{IN}$  with reduced output current. EVAL-LT8350-AZ runs at 350kHz switching frequency with spread spectrum frequency modulation (SSFM) disabled. When enabled, SSFM spreads the switching frequency of the LT8350 from  $f_{SW}$  to  $f_{SW} + 25\%$  for reduced EMI emission.

The LT8350 has an operating input voltage range of 3V to 40V. It has internal, synchronous 42V MOSFETs at buck-side and 20V MOSFETs at boost-side for high efficiency and small size. It has an adjustable switching frequency between 200kHz and 2MHz. The LT8350 can be synchronized to an external source, programmed with SSFM enabled for low EMI, or set to normal operation.

The LT8350's integrated LOADTG high side PMOS driver assists with disconnecting load when a fault is triggered. LOADTG turns off the PMOS when  $FB < 0.25V$  or  $FB > 1.1V$  or  $ISP-ISN > 0.75V$ . LOADEN can be used directly to turn off LOADTG and all power switches.

The LT8350 can regulate output current using ISP and ISN. Maximum load current can be limited when LT8350 is used for a constant voltage regulator. It can be also used for a LED driver or a battery charger where constant current regulation is required. Output current can be adjusted by placing a controllable DC voltage on the CTRL pin.

The output current can be monitored through the ISMON output pin. ISMON can be used to improve load transient response by injecting load current to  $V_C$ . The load current injection is described in the following sections.

Undervoltage lockout can be adjusted on EVAL-LT8350-AZ with a few simple resistor choices.

Small ceramic input and output capacitors are used to save space and cost. The board is designed with tiny, high frequency capacitors placed near the  $V_{IN}$  and  $V_{OUT}$  pins for a reduction in radiated EMI.

There is an inductor EMI filter and a small ferrite bead EMI filter on the input and output of EVAL-LT8350-AZ. These filters, combined with proper board layout and SSFM, are effective in reducing EMI to pass CISPR25 class 5 conducted EMI. Please follow the recommended layout and four-layer PCB thickness of EVAL-LT8350-AZ for low EMI applications.

The LT8350 data sheet gives a complete description of the part, operation, and applications information. The data sheet must be read in conjunction with this demo manual for EVAL-LT8350-AZ. The LT8350RV is assembled in a 32-lead laminate package with QFN footprint (LQFN) with thermally enhanced exposed ground pads. Proper board layout is essential for maximum thermal performance.

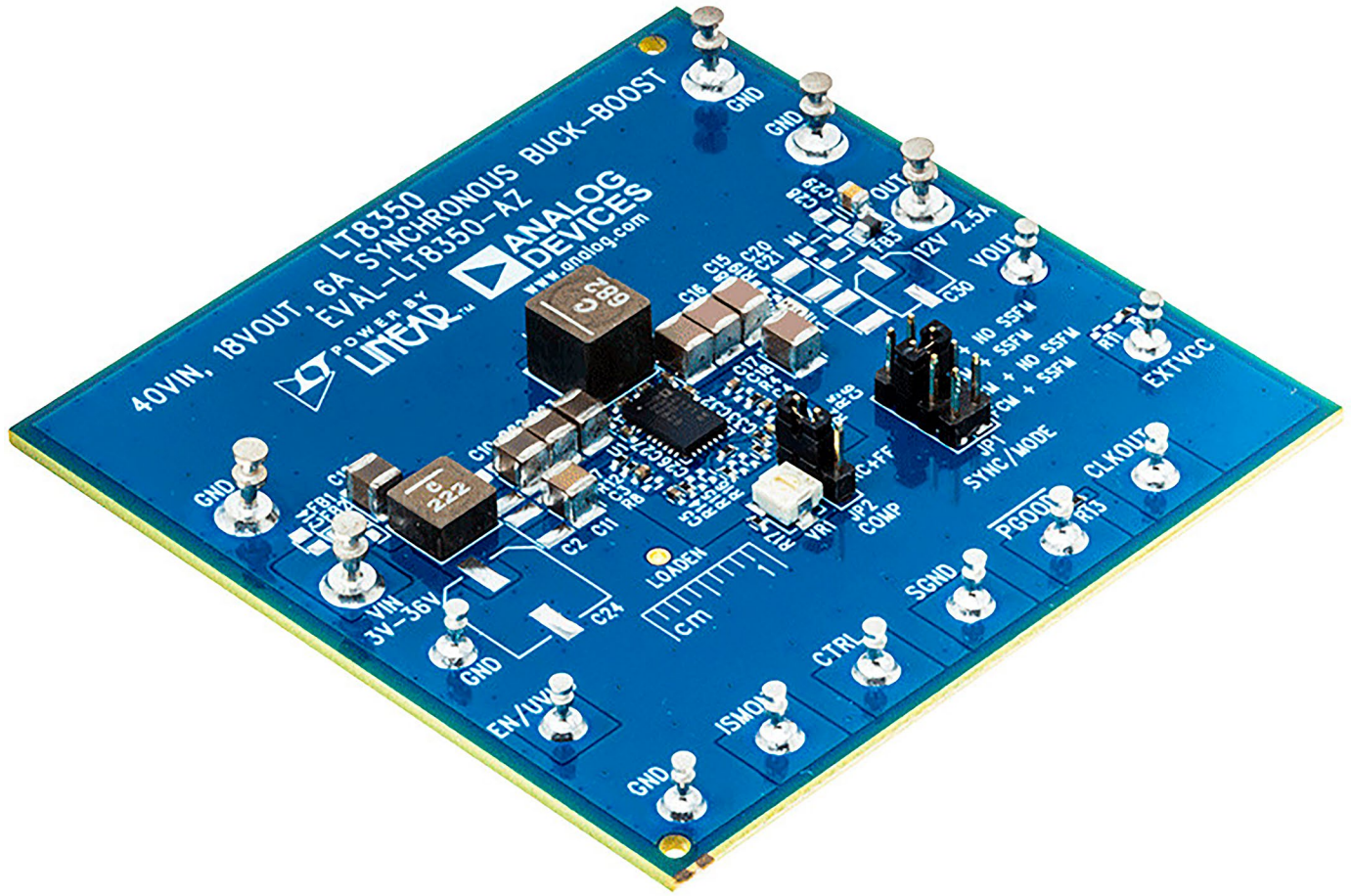
**[Design files for this circuit board are available.](#)**

All registered trademarks and trademarks are the property of their respective owners.

# DEMO MANUAL

## EVAL-LT8350-AZ

### BOARD PHOTO



### PERFORMANCE SUMMARY Specifications are at $T_A = 25^\circ\text{C}$

PARAMETER	CONDITIONS	MIN	TYP	MAX	UNITS
Input Voltage $V_{IN}$ Range	Operating, R7 = 402k, R12 = OPEN	3		40	V
Full Load (2.5A) Input Voltage Range	Component Temperature $< 85^\circ\text{C}$ at Room Temperature with No Airflow	7		40	V
Output Voltage ( $V_{OUT}$ )	R22 = 110k, R3 = 10.0k		12.0		V
Output Voltage Ripple	$V_{IN} = 12\text{V}$ , $V_{OUT} = 12\text{V}$ , $I_{OUT} = 2.5\text{A}$		50		mV
Maximum Output Current	$7.0\text{V} < V_{IN} < 40\text{V}$ , $V_{OUT} = 12\text{V}$	2.5			A
Switching Frequency ( $f_{sw}$ )	R4 = 143k, SSFM = OFF R4 = 143k, SSFM = ON		350 350 to 440		 kHz
Typical Efficiency without EMI filters	$V_{IN} = 12\text{V}$ , $V_{OUT} = 12\text{V}$ , $I_{OUT} = 2.5\text{A}$		95		%
Typical Efficiency with EMI filters	$V_{IN} = 12\text{V}$ , $V_{OUT} = 12\text{V}$ , $I_{OUT} = 2.5\text{A}$		94		%
Peak Switch Current Limit		6	7	8	A
$V_{OUT}$ Overvoltage Threshold	R22 = 110k, R3 = 10.0k		13.2		V
$V_{IN}$ Undervoltage Lockout (UVLO) Falling	R7 = 402k, R12 = 84.5k, $I_{OUT} = 2.5\text{A}$		7.2		V
$V_{IN}$ Enable Turn-On (EN) Rising	R7 = 402k, R12 = 84.5k, $I_{OUT} = 2.5\text{A}$		8.0		V

### QUICK START PROCEDURE

Evaluation circuit EVAL-LT8350-AZ is easy to set up to evaluate the performance of the LT8350. Refer to Figure 1 for proper measurement equipment setup and follow the procedure below.

NOTE: Make sure that the voltage applied to  $V_{IN}$  does not exceed 40V, which is the voltage rating for input side MOSFETs.

1. With power off, connect a load capable of 12V 2.5A operation between OUT and GND turrets on the PCB as shown in Figure 1 .
2. Connect the EN/UVLO terminal to GND with a clip-on lead. Connect the power supply (with power off) and meters as shown in Figure 1 .
3. Set JP1 at NO SSFM to disable SSFM, at SSFM to enable SSFM.

4. Set JP2 at RC for typical loop compensation, at RC+FF for load current injection scheme which improves load transient response.
5. After all connections are made, turn on the input power and verify that the input voltage is between 7V and 40V.
6. Remove the clip-on lead from EN/UVLO. Verify that the output voltage is 12V.

NOTE: If the output voltage is low, temporarily disconnect the load to make sure that it is not set too high.

7. Once the proper output voltage is established, adjust the input voltage and load within the operating ranges and observe the output voltage regulation, ripple voltage, efficiency, and other parameters.

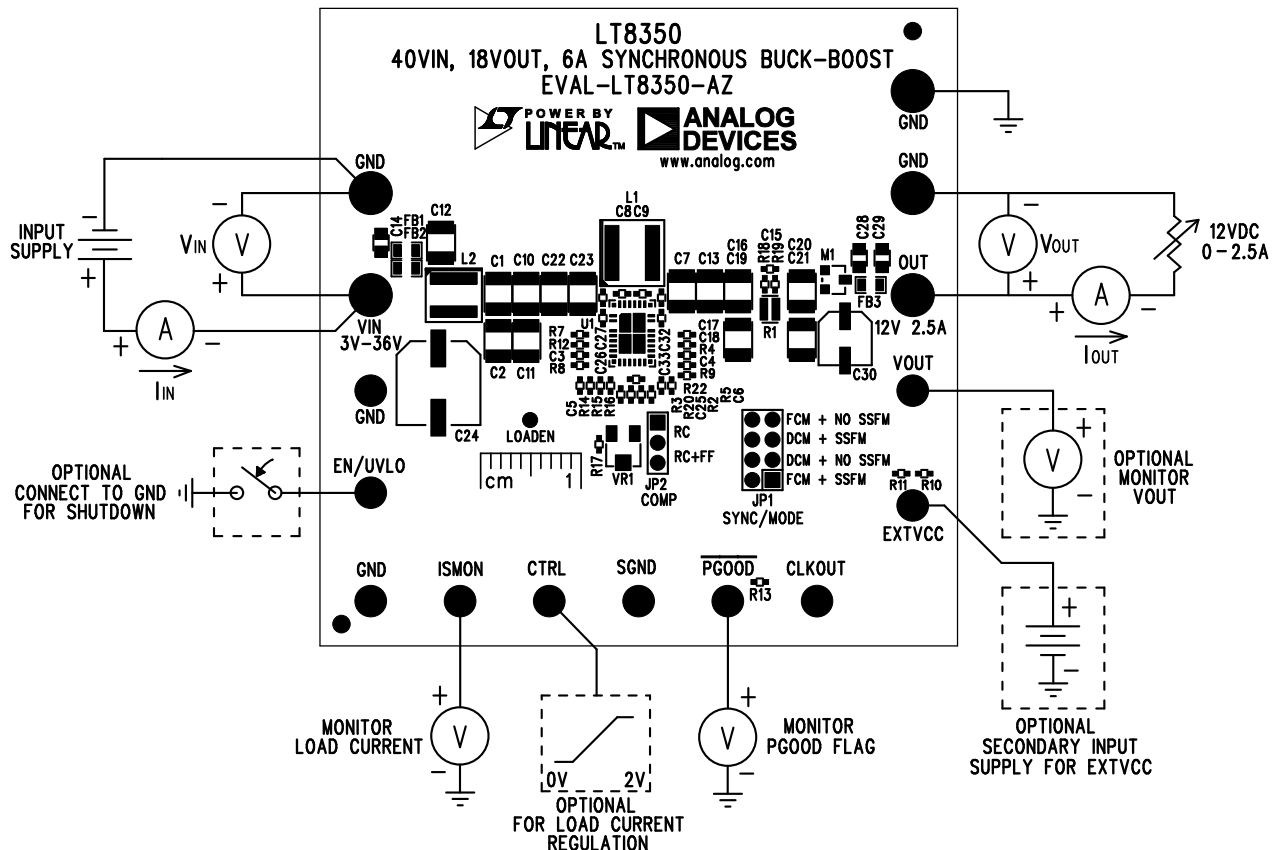


Figure 1. Test Procedure Setup Drawing for EVAL-LT8350-AZ

### TEST RESULTS

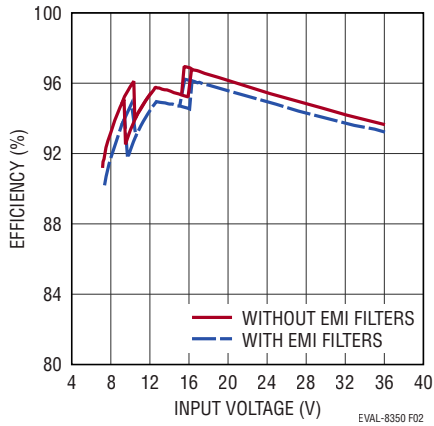


Figure 2. EVAL-LT8350-AZ Efficiency vs Input Voltage for 2.5A Load with SSFM

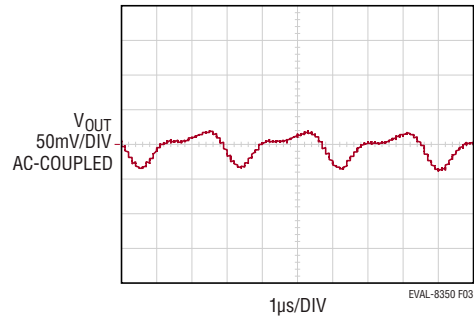


Figure 3. EVAL-LT8350-AZ Output Voltage Ripple at 12V Input Voltage and 2.5A Load

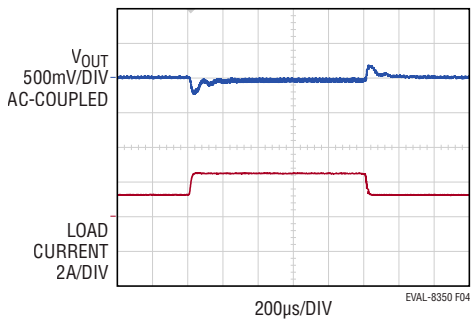


Figure 4. EVAL-LT8350-AZ Transient Response with JP1 = FCM+SSFM and JP2 = RC (12VIN 12VOUT 2.5A to 1.25A)

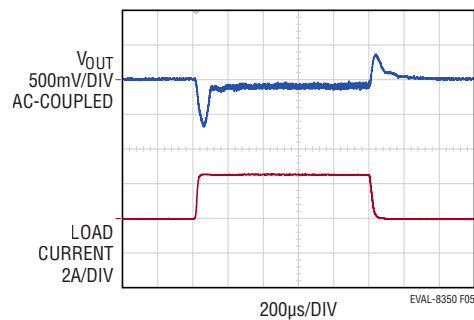


Figure 5. EVAL-LT8350-AZ Transient Response with JP1 = FCM+SSFM and JP2 = RC (12VIN 12VOUT 2.5A to 0A)

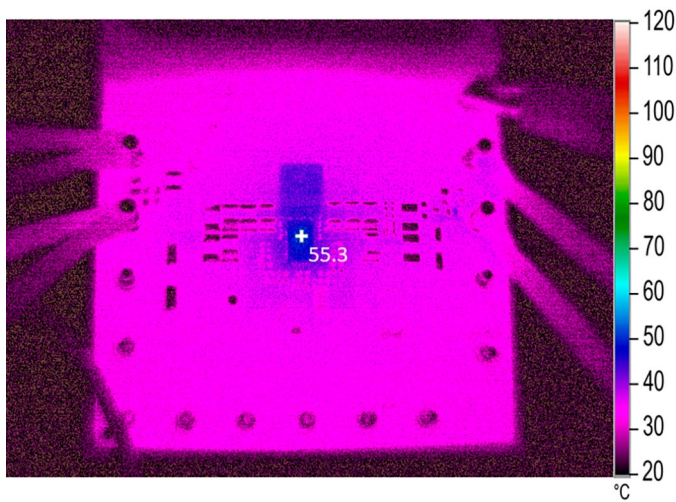


Figure 6. EVAL-LT8350-AZ Thermals 12VIN to 12VOUT 2.5A with SSFM ON

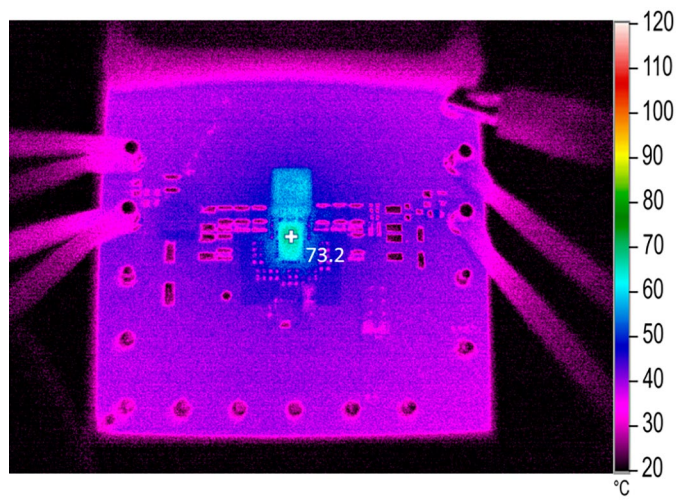


Figure 7. EVAL-LT8350-AZ Thermals, Worst Case (4-Switch Operation) 9.5VIN to 12VOUT 2.5A with SSFM ON

## LOAD CURRENT INJECTION FOR FASTER LOAD TRANSIENT RESPONSE

Load transient response can be improved with JP2 = RC+FF, which is called load current injection. The idea is to inject or feedforward load current to  $V_C$  using ISMON and a voltage divider (VR1 and R17). With JP2 = RC+FF, the RC compensation, R5 and C6, is connected to ISMON through the voltage divider instead of GND. When the load current rises stepwise, ISMON rises immediately and thus,  $V_C$  is boosted faster compared to when the load current injection is not used (JP2 = RC). To determine the proper amount of load current injection, Equation 1 can be used.

$$140 \cdot R1 \cdot \frac{R17}{VR1 + R17} = 1 \quad (1)$$

As EVAL-LT8350-AZ uses  $R1 = 10\text{m}\Omega$  and  $R17 = 3.01\text{k}\Omega$ , VR1 is determined to  $1.2\text{k}\Omega$ . Figure 8 and Figure 9 show half to full load transient response and zero to full load transient response, respectively, with the load current injection scheme (JP2 = RC+FF and VR1 =  $1.2\text{k}\Omega$ ). It is shown that the output voltage drop is smaller than Figure 4 and Figure 5. With the load current injection, output voltage drop can be reduced keeping the same output capacitance or output capacitance can be reduced keeping the same output voltage drop.

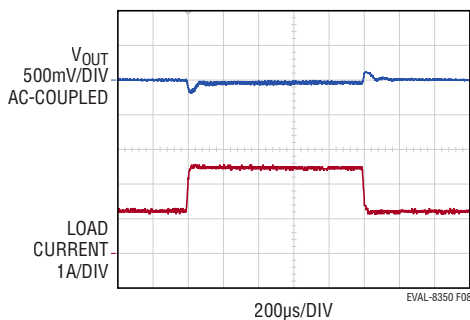


Figure 8. EVAL-LT8350-AZ Transient Response with JP1 = FCM+SSFM, JP2 = RC+FF ( $12\text{V}_{\text{IN}}$   $12\text{V}_{\text{OUT}}$  2.5A to 1.25A)

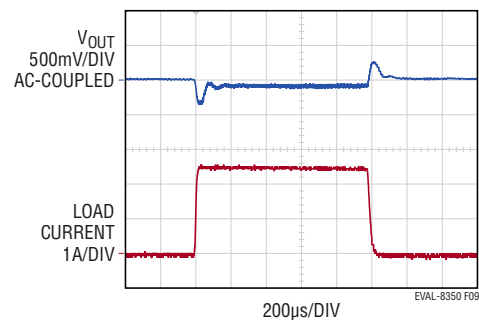
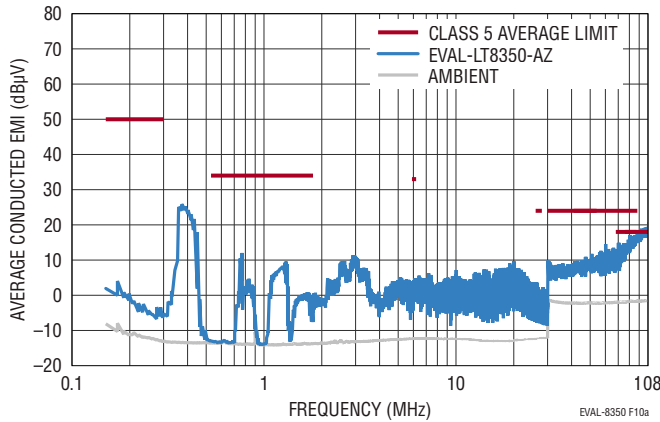
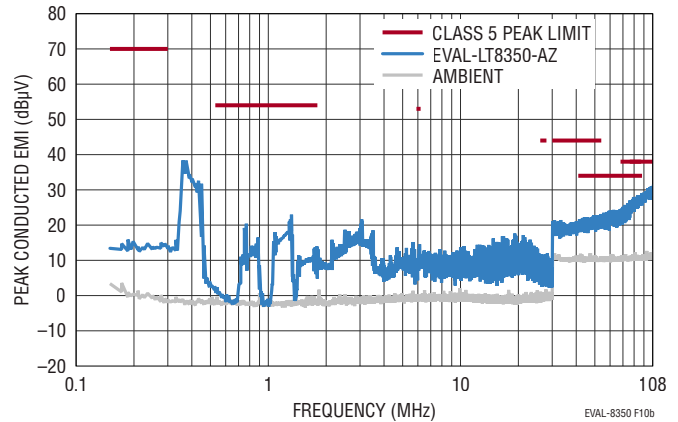


Figure 9. EVAL-LT8350-AZ Transient Response with JP1 = FCM+SSFM and JP2 = RC+FF ( $12\text{V}_{\text{IN}}$   $12\text{V}_{\text{OUT}}$  2.5A to 0A)

### EMISSION RESULT

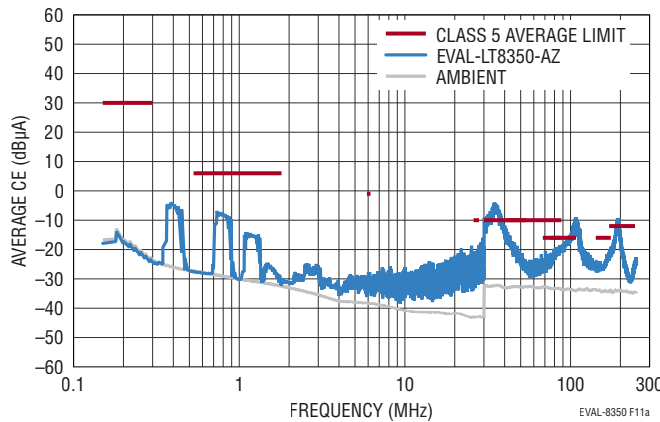


(a) CISPR25 Average, Voltage Method

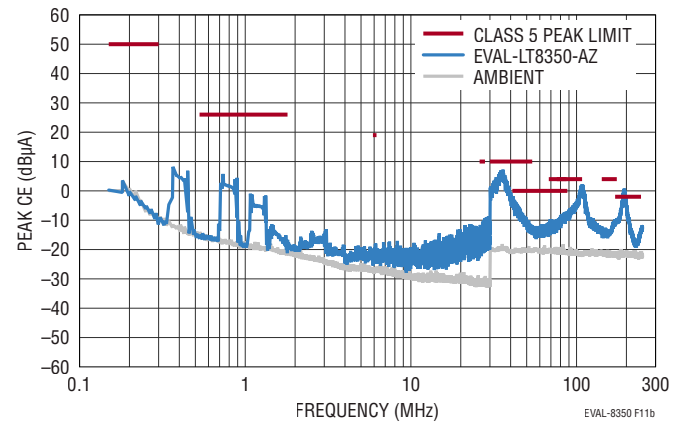


(b) CISPR25 Peak, Voltage Method

Figure 10. EVAL-LT8350-AZ CISPR25 Voltage Conducted EMI Performance with 12V<sub>IN</sub> to 12V<sub>OUT</sub> at 2.5A, JP1 = DCM+SSFM

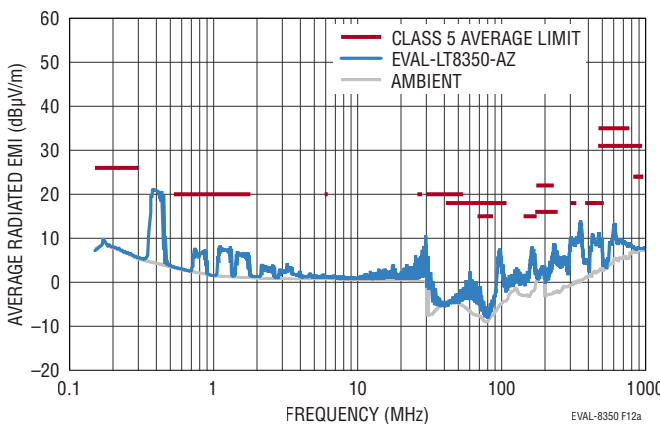


(a) CISPR25 Average, Current Method

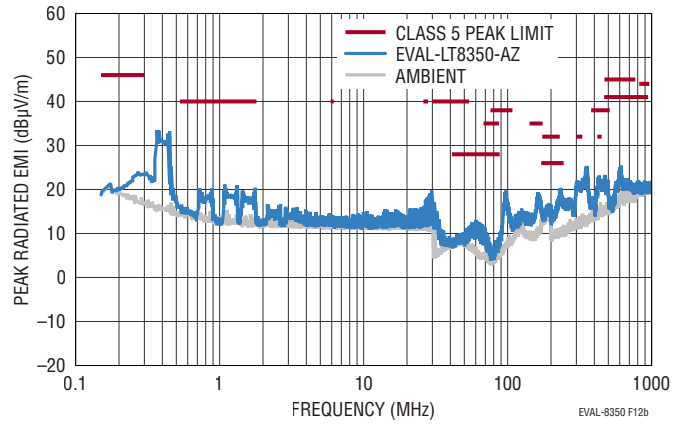


(b) CISPR25 Peak, Current Method

Figure 11. EVAL-LT8350-AZ CISPR25 Current Conducted EMI Performance with 12V<sub>IN</sub> to 12V<sub>OUT</sub> at 2.5A, JP1 = DCM+SSFM



(a) CISPR25 Average, Radiated



(b) CISPR25 Peak, Radiated

Figure 12. EVAL-LT8350-AZ CISPR25 Radiated EMI Performance with 12V<sub>IN</sub> to 12V<sub>OUT</sub> at 2.5A, JP1 = DCM + SSFM

## PARTS LIST

ITEM	QTY	REFERENCE	PART DESCRIPTION	MANUFACTURER/PART NUMBER
<b>Required Electrical Components</b>				
1	1	U1	IC, BUCK-BOOST VOLTAGE REGULATOR, LQFN-32	ANALOG DEVICES, LT8350RV#PBF
2	1	L1	IND., 6.8μH, PWR, SHIELDED, 20%, 9A, 20.80mΩ, 6.56mm × 6.36mm, AEC-Q200, XAL6060	COILCRAFT, XAL6060-682MEB
3	1	C3	CAP., 4.7μF, X5R, 10V, 20%, 0402, AEC-Q200	MURATA, GRT155R61A475ME13D
4	8	C4, C8, C9, C17, C26, C27, C32, C33	CAP., 0.1μF, X7R, 50V, 10%, 0402, AEC-Q200	MURATA, GCM155R71H104KE02D
5	1	C5	CAP., 0.47μF, X7S, 10V, 10%, 0402, AEC-Q200	MURATA, GCM155C71A474KE36D
6	1	C6	CAP., 4700pF, X7R, 25V, 10%, 0402, AEC-Q200	YAGEO, AC0402KRX7R8BB472
7	4	C7, C13, C16, C19	CAP., 22μF, X7R, 16V, 20%, 1210, AEC-Q200	TDK, CGA6P1X7R1C226M250AC
8	4	C10, C11, C22, C23	CAP., 10μF, X7S, 50V, 10%, 1210, AEC-Q200	MURATA, GCM32EC71H106KA03L
9	1	R3	RES., 10k, 1%, 1/10W, 0402, AEC-Q200	PANASONIC, ERJ2RKF1002X
10	1	R4	RES., 143k, 1%, 1/16W, 0402	VISHAY, CRCW0402143KFKED
11	1	R5	RES., 12k, 1%, 1/16W, 0402, AEC-Q200	VISHAY, CRCW040212K0FKED
12	1	R7	RES., 402k, 1%, 1/10W, 0402, AEC-Q200	PANASONIC, ERJ2RKF4023X
13	1	R12	RES., 84.5k, 1%, 1/10W, 0402, AEC-Q200	PANASONIC, ERJ2RKF8452X
14	2	R13, R14	RES., 100k, 5%, 1/16W, 0402, AEC-Q200	VISHAY, CRCW0402100KJNED
15	1	R22	RES., 110k, 1%, 1/16W, 0402, AEC-Q200	VISHAY, CRCW0402110KFKED
<b>Optional Low EMI Components</b>				
16	1	L2 (REMOVE AND SHORT)	IND., 2.2μH, PWR, SHIELDED, 20%, 9.7A, 14.5mΩ, 5.48mm × 5.28mm, XAL5030, AEC-Q200	COILCRAFT, XAL5030-222MEB
17	1	C12 (REMOVE)	CAP., 10μF, X7S, 50V, 10%, 1210, AEC-Q200	MURATA, GCM32EC71H106KA03L
18	1	C29 (REMOVE)	CAP., 4.7μF, X7R, 16V, 10%, 0805, AEC-Q200	MURATA, GCM21BR71C475KA73L
19	1	FB3 (REMOVE AND SHORT)	IND., 220Ω AT 100MHz, FERRITE BEAD, 25%, 3A, 40mΩ, 0805, AEC-Q200	TDK, MPZ2012S221ATD25
20	0	C1, C2, C20, C21	CAP., OPTION, 1210	
21	0	C14, C28	CAP., OPTION, 0805	
22	0	FB1, FB2	IND., 220Ω AT 100MHz, FERRITE BEAD, 25%, 3A, 40mΩ, 0805, AEC-Q200	TDK, MPZ2012S221ATD25
<b>Optional Electrical Components</b>				
23	1	R1 (REMOVE AND SHORT)	RES., 0.010Ω, 1%, 1W, 0805 LONG-SIDE, AEC-Q200, CURRENT SENSE	SUSUMU, KRL2012E-M-R010-F-T5
24	2	R2, R10 (REMOVE AND SHORT)	RES., 0Ω, 1/16W, 0402, AEC-Q200	VISHAY, CRCW04020000Z0ED
25	1	R17 (REMOVE)	RES., 3.01k, 1%, 1/10W, 0402, AEC-Q200	PANASONIC, ERJ2RKF3011X
26	1	VR1 (REMOVE)	RES., 20k, 20%, 1/8W, SMD 3mm SQ, 1-TURN, TOP ADJ., TRIMPOT	BOURNS, 3313J-1-203E
27	0	R8, R9, R11, R15, R16, R18-R20	RES., OPTION, 0402	

# DEMO MANUAL

## EVAL-LT8350-AZ

---

### PARTS LIST

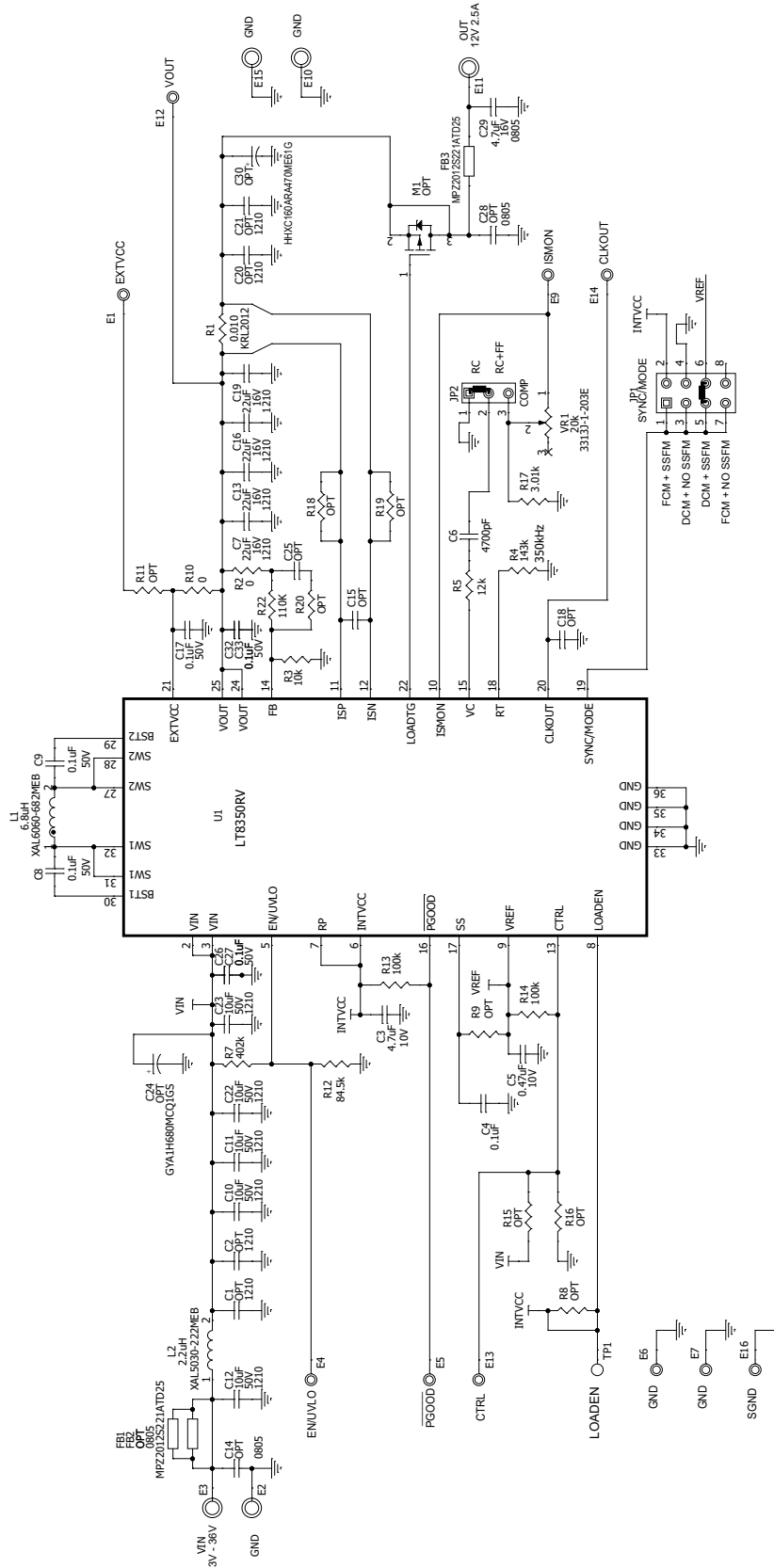
ITEM	QTY	REFERENCE	PART DESCRIPTION	MANUFACTURER/PART NUMBER
28	0	M1	XSTR., OPTION, MOSFET, P-CH, SOT-23	
29	0	C15, C18, C25	CAP, OPTION, 0402	
30	0	C24	CAP, 68 $\mu$ F, ALUM POLY, 50V, 20%, SMD, 8.0mm $\times$ 10.0mm	NICHICON, GYA1H680MCQ1GS
31	0	C30	CAP, 47 $\mu$ F, ALUM POLY, 16V, 20%, SMD, 5.0mm $\times$ 5.8mm, AEC-Q200	UNITED-CHEMI-CON, HHXC160ARA470ME61G

#### Hardware : For Evaluation Circuit Only

32	1	JP1	CONN., HDR, MALE, 2 $\times$ 4, 2mm, VERT, ST, THT	WURTH ELEKTRONIK, 62000821121
33	1	JP2	CONN., HDR, MALE, 1 $\times$ 3, 2mm, VERT, ST, THT	WURTH ELEKTRONIK, 62000311121
34	2	XJP1, XJP2	CONN., SHUNT, FEMALE, 2-POS, 2mm	WURTH ELEKTRONIK, 60800213421
35	10	E1, E4-E7, E9, E12-E14, E16	TEST POINT, TURRET, 0.064" MTG. HOLE, PCB 0.062" THK	MILL-MAX, 2308-2-00-80-00-00-07-0
36	5	E2, E3, E10, E11, E15	TEST POINT, TURRET, 0.094" MTG. HOLE, PCB 0.062" THK	MILL-MAX, 2501-2-00-80-00-00-07-0



## SCHEMATIC DIAGRAM



**NOTE: UNLESS OTHERWISE SPECIFIED**

1. ALL RESISTORS ARE 0402, 5%.
2. ALL CAPACITORS ARE 0402.



### ESD Caution

**ESD (electrostatic discharge) sensitive device.** Charged devices and circuit boards can discharge without detection. Although this product features patented or proprietary protection circuitry, damage may occur on devices subjected to high energy ESD. Therefore, proper ESD precautions should be taken to avoid performance degradation or loss of functionality.

### Legal Terms and Conditions

By using the evaluation board discussed herein (together with any tools, components documentation or support materials, the "Evaluation Board"), you are agreeing to be bound by the terms and conditions set forth below ("Agreement") unless you have purchased the Evaluation Board, in which case the Analog Devices Standard Terms and Conditions of Sale shall govern. Do not use the Evaluation Board until you have read and agreed to the Agreement. Your use of the Evaluation Board shall signify your acceptance of the Agreement. This Agreement is made by and between you ("Customer") and Analog Devices, Inc. ("ADI"), with its principal place of business at One Technology Way, Norwood, MA 02062, USA. Subject to the terms and conditions of the Agreement, ADI hereby grants to Customer a free, limited, personal, temporary, non-exclusive, non-sublicensable, non-transferable license to use the Evaluation Board FOR EVALUATION PURPOSES ONLY. Customer understands and agrees that the Evaluation Board is provided for the sole and exclusive purpose referenced above, and agrees not to use the Evaluation Board for any other purpose. Furthermore, the license granted is expressly made subject to the following additional limitations: Customer shall not (i) rent, lease, display, sell, transfer, assign, sublicense, or distribute the Evaluation Board; and (ii) permit any Third Party to access the Evaluation Board. As used herein, the term "Third Party" includes any entity other than ADI, Customer, their employees, affiliates and in-house consultants. The Evaluation Board is NOT sold to Customer; all rights not expressly granted herein, including ownership of the Evaluation Board, are reserved by ADI. CONFIDENTIALITY. This Agreement and the Evaluation Board shall all be considered the confidential and proprietary information of ADI. Customer may not disclose or transfer any portion of the Evaluation Board to any other party for any reason. Upon discontinuation of use of the Evaluation Board or termination of this Agreement, Customer agrees to promptly return the Evaluation Board to ADI. ADDITIONAL RESTRICTIONS. Customer may not disassemble, decompile or reverse engineer chips on the Evaluation Board. Customer shall inform ADI of any occurred damages or any modifications or alterations it makes to the Evaluation Board, including but not limited to soldering or any other activity that affects the material content of the Evaluation Board. Modifications to the Evaluation Board must comply with applicable law, including but not limited to the RoHS Directive. TERMINATION. ADI may terminate this Agreement at any time upon giving written notice to Customer. Customer agrees to return to ADI the Evaluation Board at that time. LIMITATION OF LIABILITY. THE EVALUATION BOARD PROVIDED HEREUNDER IS PROVIDED "AS IS" AND ADI MAKES NO WARRANTIES OR REPRESENTATIONS OF ANY KIND WITH RESPECT TO IT. ADI SPECIFICALLY DISCLAIMS ANY REPRESENTATIONS, ENDORSEMENTS, GUARANTEES, OR WARRANTIES, EXPRESS OR IMPLIED, RELATED TO THE EVALUATION BOARD INCLUDING, BUT NOT LIMITED TO, THE IMPLIED WARRANTY OF MERCHANTABILITY, TITLE, FITNESS FOR A PARTICULAR PURPOSE OR NON-INFRINGEMENT OF INTELLECTUAL PROPERTY RIGHTS. IN NO EVENT WILL ADI AND ITS LICENSORS BE LIABLE FOR ANY INCIDENTAL, SPECIAL, INDIRECT, OR CONSEQUENTIAL DAMAGES RESULTING FROM CUSTOMER'S POSSESSION OR USE OF THE EVALUATION BOARD, INCLUDING BUT NOT LIMITED TO LOST PROFITS, DELAY COSTS, LABOR COSTS OR LOSS OF GOODWILL. ADI'S TOTAL LIABILITY FROM ANY AND ALL CAUSES SHALL BE LIMITED TO THE AMOUNT OF ONE HUNDRED US DOLLARS (\$100.00). EXPORT. Customer agrees that it will not directly or indirectly export the Evaluation Board to another country, and that it will comply with all applicable United States federal laws and regulations relating to exports. GOVERNING LAW. This Agreement shall be governed by and construed in accordance with the substantive laws of the Commonwealth of Massachusetts (excluding conflict of law rules). Any legal action regarding this Agreement will be heard in the state or federal courts having jurisdiction in Suffolk County, Massachusetts, and Customer hereby submits to the personal jurisdiction and venue of such courts. The United Nations Convention on Contracts for the International Sale of Goods shall not apply to this Agreement and is expressly disclaimed.