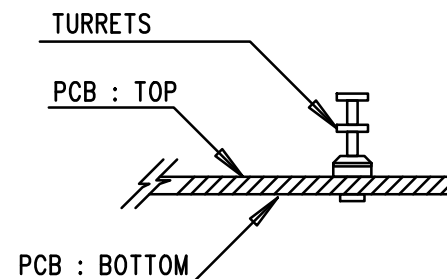
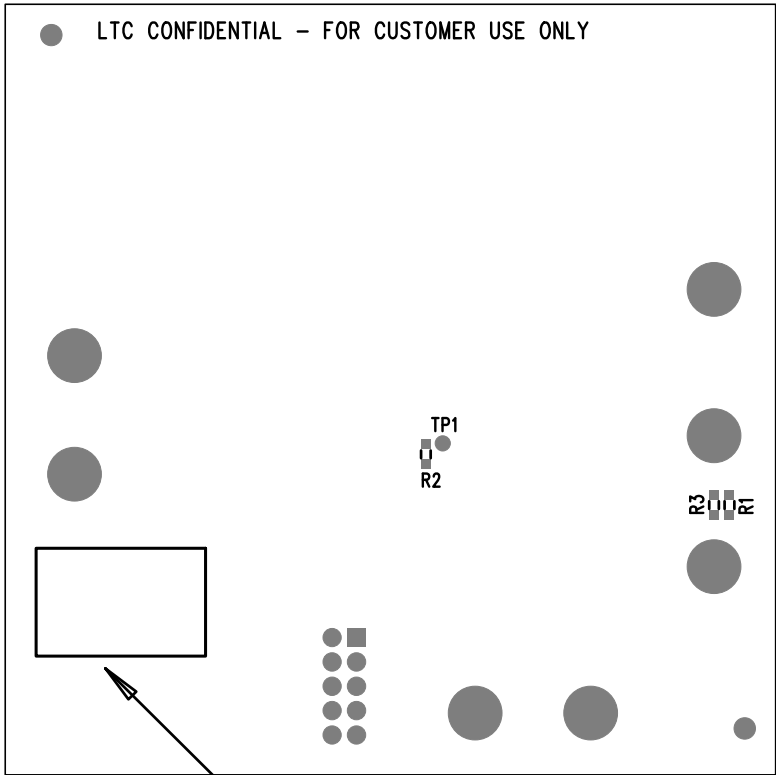


## NOTES: UNLESS OTHERWISE SPECIFIED

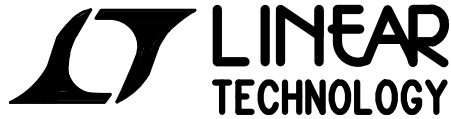
1. WORKMANSHIP SHALL BE IN ACCORDANCE WITH IPC-A-610.  
MAXIMUM SOLDER TEMPERATURE IS 240 DEG C.
2. ASSEMBLY PROCESS SHALL INCLUDE: REFLOW SOLDER TOP SIDE SMD.
3. PARTS TO OMIT WILL BE SPECIFIED ON THE BILL OF MATERIALS.  
LOCATIONS OF OMITTED PARTS SHALL BE FREE OF SOLDER.  
MASK THE SOLDER STENCIL WHERE SMT PARTS ARE OMITTED.
4. INSTALL SHUNTS AS SHOWN ON ASSY DRAWING.
5. DEPANELIZE BOARDS AFTER ASSEMBLY AND ROUTE-OUT THE  
BREAKOUT TABS ON FOUR SIDES OF THE BOARD EDGE.
6. DO NOT APPLY ANY KIND OF ASSEMBLY STAMP OR QA STAMP  
TO ANY BOARD.



		1630 MCCARTHY BLVD MILPITAS, CA 95035 PH: (408)432-1900 www.linear.com LTC CONFIDENTIAL- FOR CUSTOMER USE ONLY	
		TITLE: TOP ASSEMBLY DRAWING LOW IQ 60V, 2A BOOST/SEPIC/INVERTING CONVERTER	
SIZE N/A	IC NO. LT8362EDD DC2628A	REV. 2	
FILENAME:		SHT 1 OF 2	



DEMO BOARD SERIAL NUMBER LABEL



1630 MCCARTHY BLVD  
MILPITAS, CA 95035  
PH: (408)432-1900  
[www.linear.com](http://www.linear.com)  
LTC CONFIDENTIAL-  
FOR CUSTOMER USE ONLY

TITLE: BOTTOM ASSEMBLY DRAWING

LOW IQ 60V, 2A BOOST/SEPIC/INVERTING CONVERTER

SIZE	IC NO.	LT8362EDD	REV
N/A		DC2628A	2

FILENAME: SHT 2 of 2