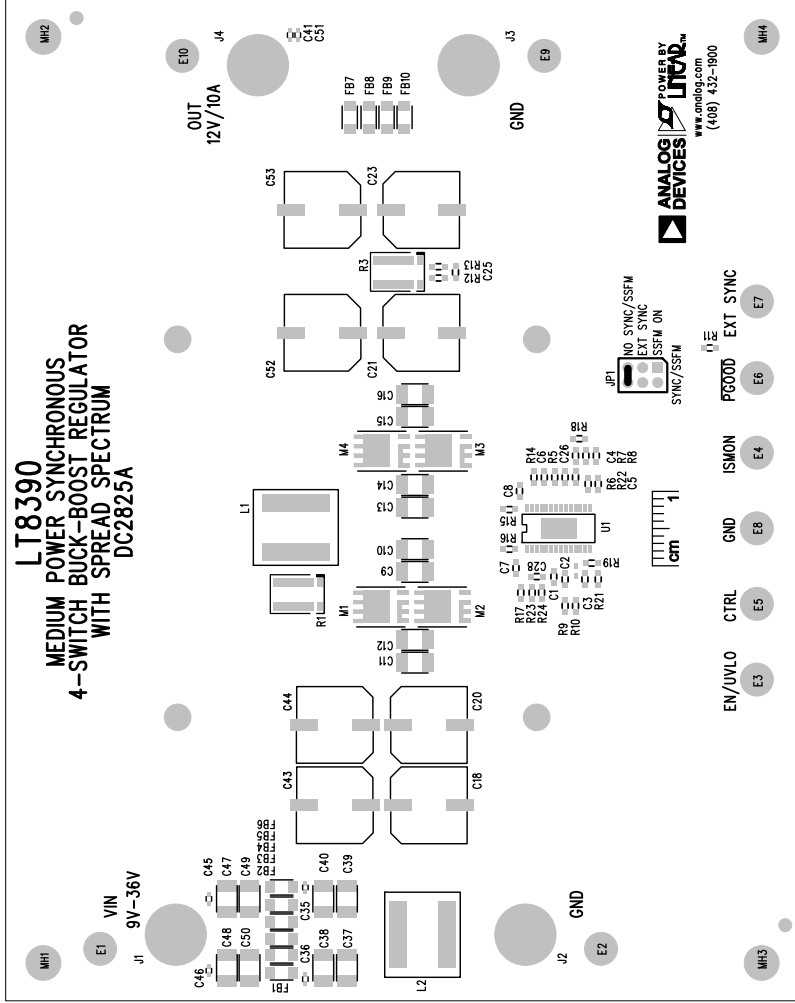
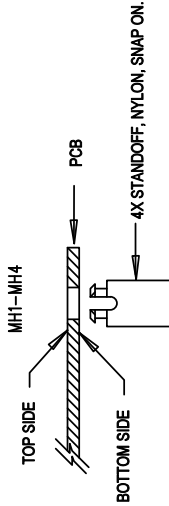


LT8390
MEDIUM POWER SYNCHRONOUS
4-SWITCH BUCK-BOOST REGULATOR
WITH SPREAD SPECTRUM
DC2825A

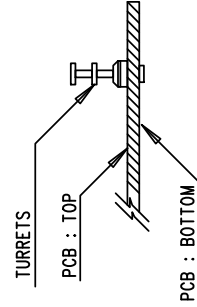
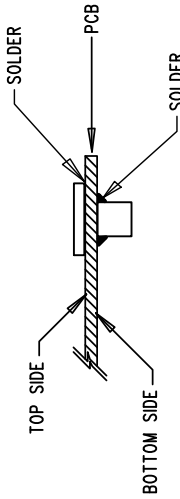




NOTES: UNLESS OTHERWISE SPECIFIED

1. WORKMANSHIP SHALL BE IN ACCORDANCE WITH IPC-A-610.
MAXIMUM SOLDER TEMPERATURE IS 240 DEG C.
2. ASSEMBLY PROCESS SHALL INCLUDE: REFLOW SOLDER TOP SIDE SMD.
3. PARTS TO OMIT WILL BE SPECIFIED ON THE BILL OF MATERIALS.
LOCATIONS OF OMITTED PARTS SHALL BE FREE OF SOLDER.
MASK THE SOLDER STENCIL WHERE SMT PARTS ARE OMITTED.
4. INSTALL SHUNTS AS SHOWN ON ASSY DRAWING.
5. DEPANELIZE BOARDS AFTER ASSEMBLY AND ROUTE-OUT THE
BREAKOUT TABS ON FOUR SIDES OF THE BOARD EDGE.
6. DO NOT APPLY ANY KIND OF ASSEMBLY STAMP OR QA STAMP
TO ANY BOARD.
7. INSTALL 4 STANDOFFS AT 4 LOCATIONS AS SHOWN BELOW:



J1-J4 BANANA JACK : KEYSTONE 575-4



 ANALOG DEVICES www.analog.com		 POWER BY LINEAR™ (408) 432-1900	
TITLE: TOP ASSEMBLY DRAWING			
MEDIUM POWER SYNCHRONOUS 4-SWITCH BUCK-BOOST REGULATOR WITH SPREAD SPECTRUM			
SIZE	IC NO.	LT8390EFE	REV.
N/A		DC2825A	2
FILENAME: DC2825A-2.PCB		SHT 1 OF 2	