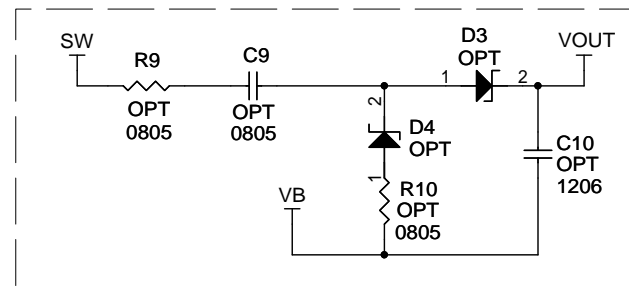


OPTIONAL CIRCUIT



NOTE: UNLESS OTHERWISE SPECIFIED

1. ALL RESISTORS ARE 0402.
ALL CAPACITORS ARE 0402.

VERSION TABLE *

ASSEMBLY TYPE	VIN	VOUT	D1	D2	C1	C7	L1	L2	R2	R5	R12
DC2186A-A	3V - 10V	12V / 120mA - 450mA	DFLS130L	NOT USED	NOT USED	3.3nF	SD18-150-R	NOT USED	130K	6.04K	11.3K
DC2186A-B	5V - 12V	-12V / 150mA - 230mA	NOT USED	DFLS130L	1uF, 25V	2.2nF	SD18-330-R	SD18-330-R	143K	20K	22.1K

CUSTOMER NOTICE

LINEAR TECHNOLOGY HAS MADE A BEST EFFORT TO DESIGN A CIRCUIT THAT MEETS CUSTOMER-SUPPLIED SPECIFICATIONS; HOWEVER, IT REMAINS THE CUSTOMER'S RESPONSIBILITY TO VERIFY PROPER AND RELIABLE OPERATION IN THE ACTUAL APPLICATION. COMPONENT SUBSTITUTION AND PRINTED CIRCUIT BOARD LAYOUT MAY SIGNIFICANTLY AFFECT CIRCUIT PERFORMANCE OR RELIABILITY. CONTACT LINEAR TECHNOLOGY APPLICATIONS ENGINEERING FOR ASSISTANCE.

THIS CIRCUIT IS PROPRIETARY TO LINEAR TECHNOLOGY AND SUPPLIED FOR USE WITH LINEAR TECHNOLOGY PARTS.



1630 McCarthy Blvd.
Milpitas, CA 95035
Phone: (408)432-1900 www.linear.com
Fax: (408)434-0507
LTC Confidential-For Customer Use Only

TITLE: SCHEMATIC

BOOST/SEPIC/ INVERTING REGULATOR

SIZE N/A	IC NO. LT8580EDD DEMO CIRCUIT 2186A	REV. 2
DATE: Thursday, June 26, 2014		SHEET 1 OF 1