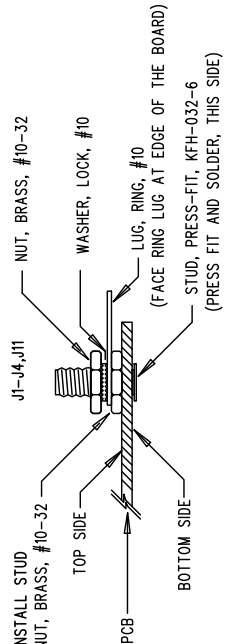
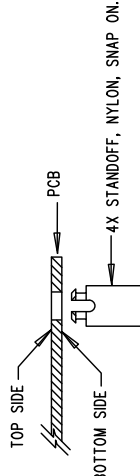


NOTES: UNLESS OTHERWISE SPECIFIED

1. WORKMANSHIP SHALL BE IN ACCORDANCE WITH IPC-A-610.
2. MAXIMUM SOLDER TEMPERATURE IS 240 DEG C.
3. ASSEMBLY PROCESS SHALL INCLUDE: REFLOW SOLDER TOP SIDE SMD.
4. PARTS TO OMT WILL BE SPECIFIED ON THE BILL OF MATERIALS.
5. LOCATIONS OF OMITTED PARTS SHALL BE FREE OF SOLDER.
6. MASK THE SOLDER STENCIL WHERE SMT PARTS ARE OMITTED.
7. INSTALL SHUNTS AS SHOWN ON ASSY DRAWING.
8. DEPANELIZE BOARDS AFTER ASSEMBLY AND ROUTE-OUT THE BREAKOUT TABS ON FOUR SIDES OF THE BOARD EDGE.
9. DO NOT APPLY ANY KIND OF ASSEMBLY STAMP OR QA STAMP TO ANY BOARD.
10. INSTALL 4 STANDOFFS AT 4 LOCATIONS AS SHOWN BELOW:



ANALOG DEVICES POWER BY LINEAR™ www.analog.com (408) 432-1900	
TITLE: TOP ASSEMBLY DRAWING DUAL PHASE BIDIRECTIONAL SYNCHRONOUS 4-SWITCH BUCK-BOOST REGULATOR	
SIZE N/A	REV. 3
IC NO. LT8708/LT8708-1EUGH DC2719A	
FILENAME: DC2719A-3.PCB	
SHT 1 OF 2	