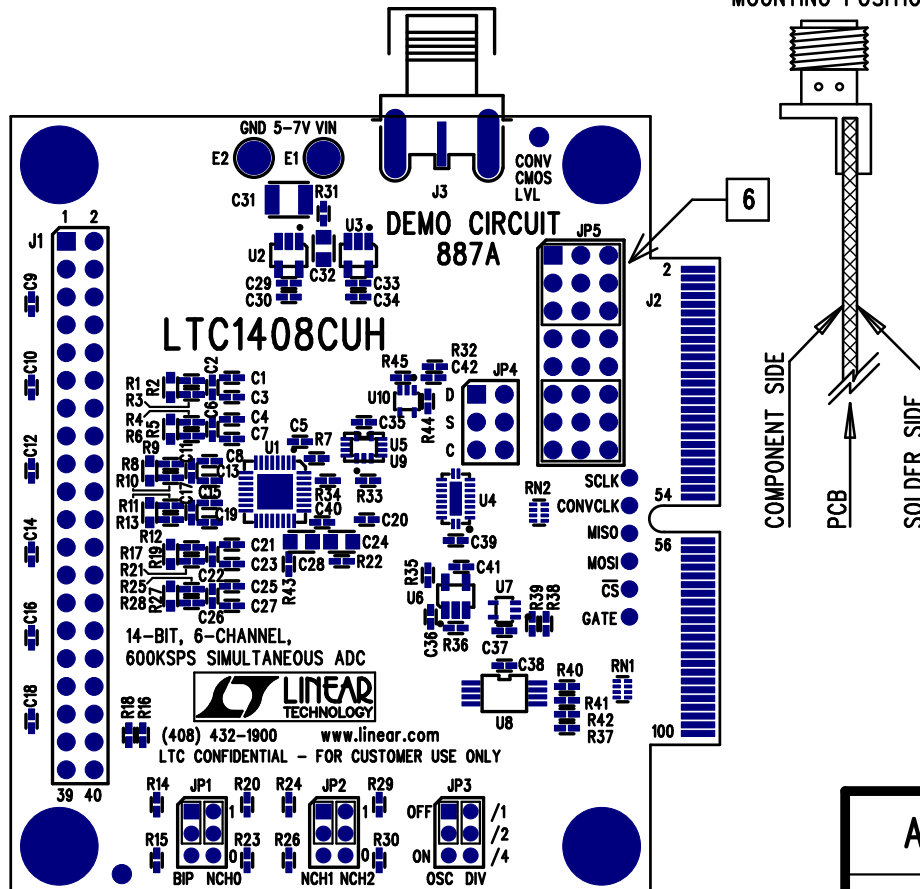


# REVISIONS

REV	DESCRIPTION	APPR	DATE
A-1	FINAL FABRICATION	MT	01-27-06

CENTER PIN OF J3  
SHALL BE FREE OF SOLDER.  
0.04" MIN. FROM THE EDGE  
OF THE BOARD ON TOP SIDE.

J3 CONNECTOR  
MOUNTING POSITION



## NOTES: UNLESS OTHERWISE SPECIFIED

1. WORKMANSHIP SHALL BE IN ACCORDANCE WITH IPC-A-610.
2. INSTALL SHUNTS ON JP1-JP3 PIN 1&3, PIN 2&4.
3. PARTS TO OMIT WILL BE SPECIFIED ON THE BILL OF MATERIALS. LOCATIONS OF OMITTED PARTS SHALL BE FREE OF SOLDER. MASK THE SOLDER STENCIL WHERE SMT PARTS ARE OMITTED.
4. DEPANELIZE BOARDS AFTER ASSEMBLY AND ROUTE-OUT THE BREAKOUT TABS ON FOUR SIDES OF THE BOARD EDGE.
5. ASSY PROCESSES SHALL INCLUDE: REFLOW SOLDER TOP SIDE SMD.
6. INSTALL 2 JUMPERS 3X3 0.100" ON JP5 AS SHOWN. DO NOT INSTALL ANY SHUNT ON JP5 AT THE FINAL ASSY PROCESS. REFER TO QSG FOR JP5 CONFIGURATION.

TOP SILKSCREEN  
LINEAR TECHNOLOGY  
DC887A-1 \* LTC1408CUH  
14-BIT, 6-CHANNEL, 600KSPS SIMULTANEOUS ADC  
DATE: 01-27-06

## APPROVALS

	INIT	DATE
DRAWN		
CHECK		
DESIGN	KIM T.	01-27-06
ENGR	MARK T.	01-27-06

SCALE = NONE



1630 MCCATHY BLVD  
MILPITAS, CA 95035  
PH: (408)432-1900  
LTC CONFIDENTIAL-  
FOR CUSTOMER USE ONLY

TITLE: TOP ASSEMBLY DRAWING

14-BIT, 6-CHANNEL, 600KSPS SIMULTANEOUS ADC

SIZE	DEMO	REV.
A	DC887A-1 * LTC1408CUH	A-1

SHT 1 of 1