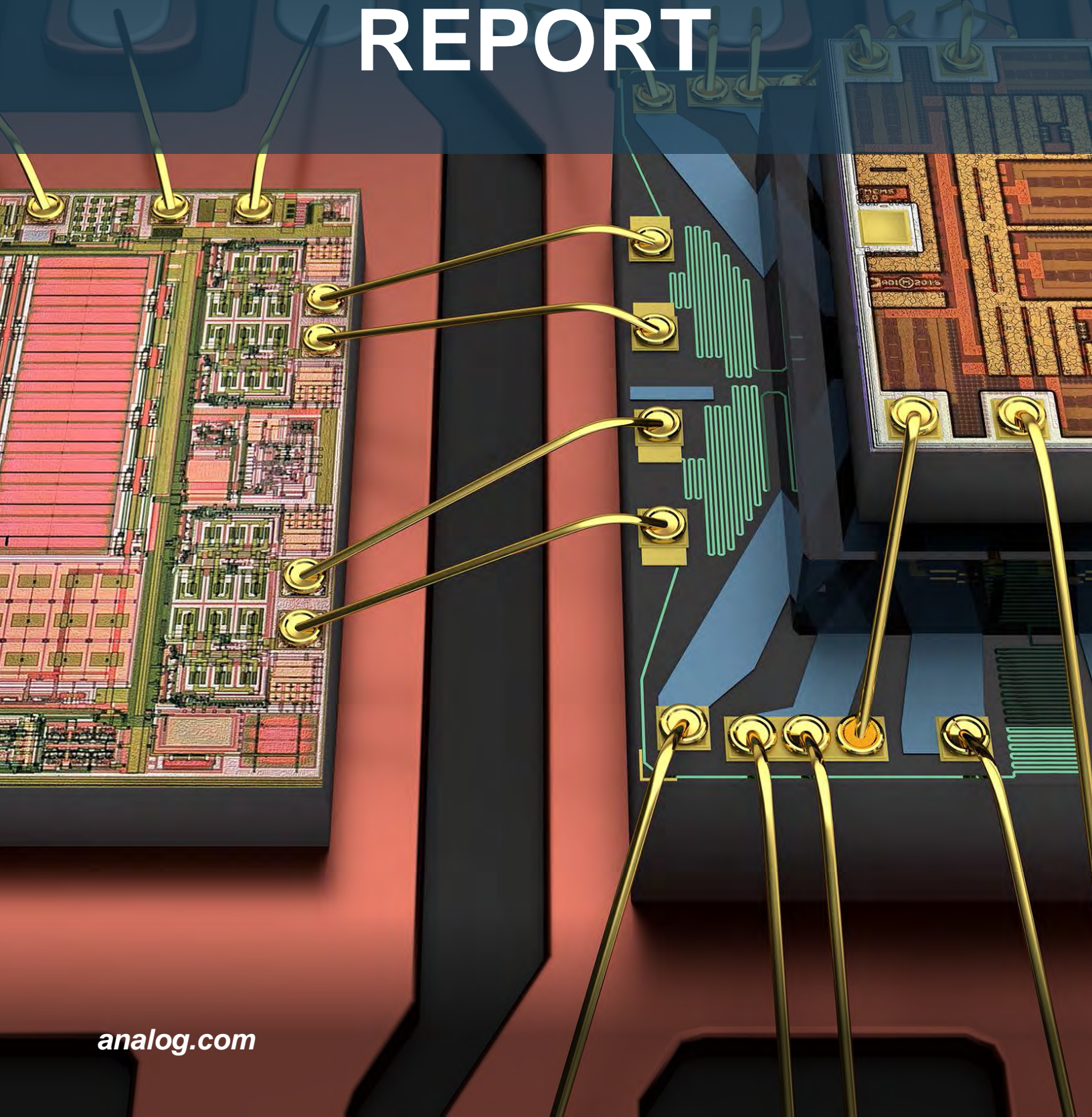


RELIABILITY REPORT



**RELIABILITY DATA
LTC1555 / LTC1556**

8/21/2006

• OPERATING LIFE TEST

PACKAGE TYPE	SAMPLE SIZE	OLDEST DATE CODE	NEWEST DATE CODE	K DEVICE HOURS ⁽¹⁾ AT +125°C	NUMBER OF ⁽²⁾ FAILURES
SSOP/TSSOP	546 546	9701	0027	276.34 276.34	0 0

• PRESSURE COOKER TEST AT 15 PSIG, +121°C

PACKAGE TYPE	SAMPLE SIZE	OLDEST DATE CODE	NEWEST DATE CODE	K DEVICE HOURS	NUMBER OF FAILURES
SSOP/TSSOP	7,138 7,138	9724	0309	495.83 495.83	0 0

• TEMP CYCLE FROM -65°C to +150°C

PACKAGE TYPE	SAMPLE SIZE	OLDEST DATE CODE	NEWEST DATE CODE	K DEVICE CYCLES	NUMBER OF FAILURES
SSOP/TSSOP	7,444 7,444	9724	0309	1,364.78 1,364.78	0 0

• THERMAL SHOCK FROM -65°C to +150°C

PACKAGE TYPE	SAMPLE SIZE	OLDEST DATE CODE	NEWEST DATE CODE	K DEVICE CYCLES	NUMBER OF FAILURES
SSOP/TSSOP	3,784 3,784	9724	0309	957.90 957.90	0 0

(1) Assumes Activation Energy = 0.7 Electron Volts

(2) Failure Rate Equivalent to +55°C, 60% Confidence Level = 42.83 FITS

(3) Mean Time Between Failures in Years = 2,663

Note: 1 FIT = 1 Failure in One Billion Hours.