

POWER 1

| | | |
|--------|---------------------|-----------------------|
| Assy. | Q1-Q30 | L1-L6 |
| 256A-A | SILICONIX= S14420DY | PULSE= PE-53691 |
| 256A-B | FAIRCHILD= FDS6670A | PANASONIC= ETQP1F1R3L |

LINEAR TECHNOLOGY

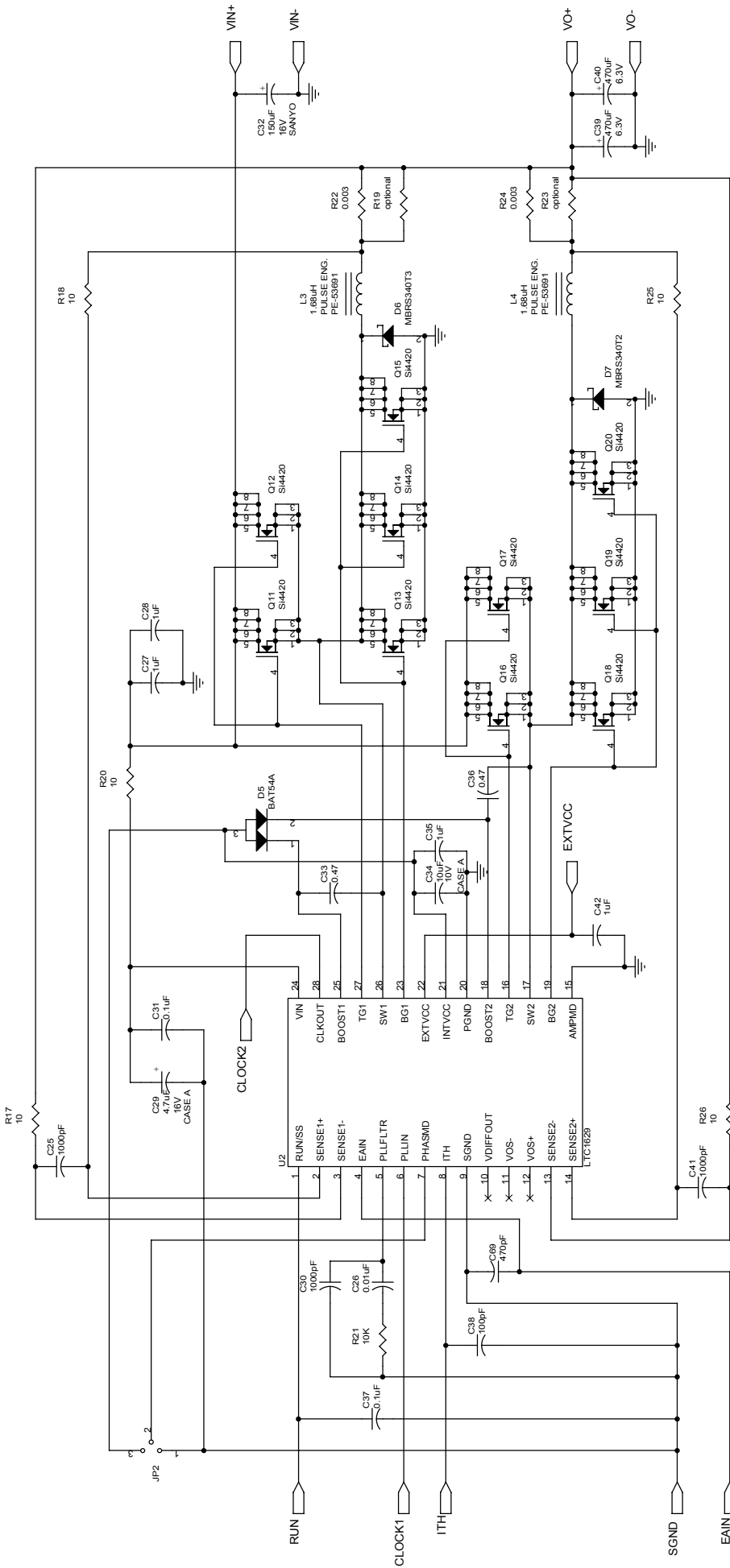
Title: 6-PHASE, VERY HIGH CURRENT, LOW VOLTAGE POWER SUPPLY

Document Number: DEMO DC256A-A&B

Part Number: LTC1629CG

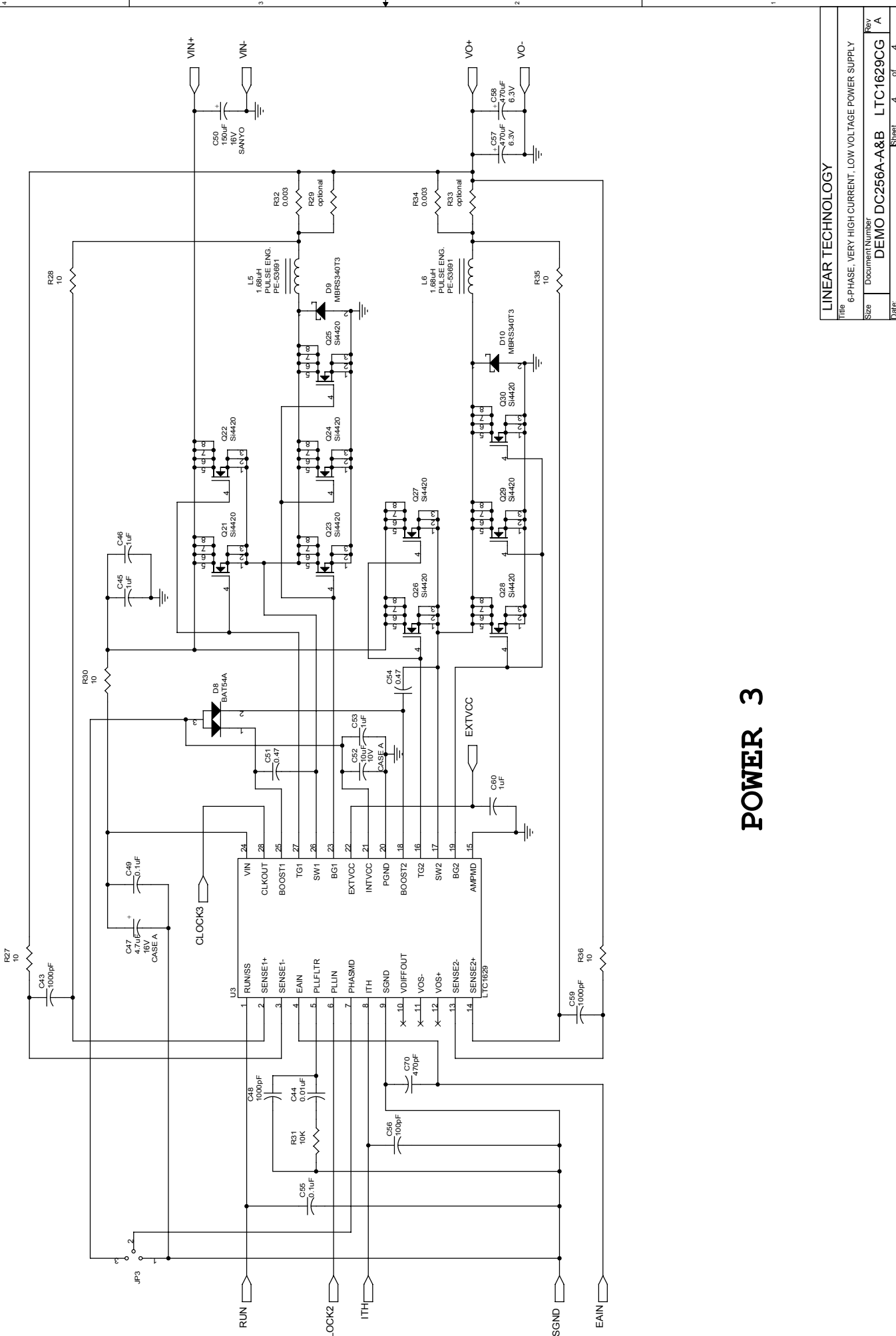
Rev: A

Date: Sheet 2 of 4



POWER 2

| | |
|-------------------|--|
| LINEAR TECHNOLOGY | |
| Title | 6-PHASE, VERY HIGH CURRENT, LOW VOLTAGE POWER SUPPLY |
| Size | Document Number |
| Date: | DEMO DC256A-A&B LTC1629CG Rev A |
| | Sheet 3 of 4 |



POWER 3

| | |
|-------------------|--|
| LINEAR TECHNOLOGY | |
| Title | 6-PHASE, VERY HIGH CURRENT, LOW VOLTAGE POWER SUPPLY |
| Document Number | DEMO DC256A-A&B LTC1629CG |
| Size | Rev A |
| Date | Sheet 4 of 4 |