

REVISION HISTORY

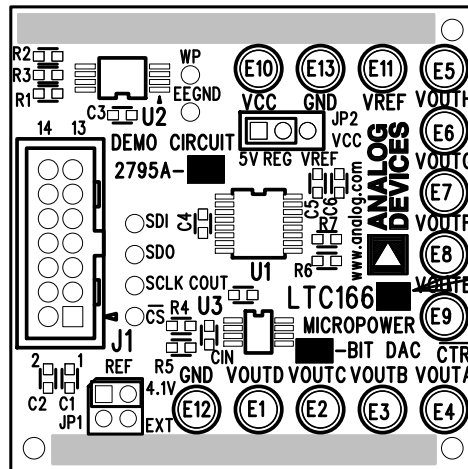
ECO	REV	DESCRIPTION	APP. ENG.	DATE
-	2	PRODUCTION	CLARENCE M.	03-06-18

NOTES: UNLESS OTHERWISE SPECIFIED

1. WORKMANSHIP SHALL BE IN ACCORDANCE WITH IPC-A-610.
2. ASSEMBLY PROCESS SHALL INCLUDE: REFLOW SOLDER TOP SIDE SMD. MAXIMUM SOLDER TEMPERATURE IS 240 DEGREES CELSIUS.
3. PARTS TO OMIT WILL BE SPECIFIED ON THE BILL OF MATERIALS. LOCATIONS OF OMITTED PARTS SHALL BE FREE OF SOLDER. MASK THE SOLDER STENCIL WHERE SMT PARTS ARE OMITTED.
4. INSTALL SHUNTS AS SHOWN ON ASSY DRAWING.
5. DEPANELIZE BOARDS AFTER ASSEMBLY AND ROUTE-OUT THE BREAKOUT TABS ON FOUR SIDES OF THE BOARD EDGE.
6. DO NOT APPLY ANY KIND OF ASSEMBLY STAMP OR QA STAMP TO ANY BOARD.

7. MARK EACH LTC PART NUMBER AND ASSEMBLY TYPE IN THE WHITE BLOCK AREAS WITH BLACK PERMANENT MARKER AS SHOWN IN TABLE BELOW:

ASSY	U1	SUFFIX	-BIT
A	LTC1660	0	10
B	LTC1665	5	8
C	LTC1664	4	10



APPROVALS

PCB DES.	KIM T.
APP ENG.	CLARENCE M.
SCALE = NONE	



AHEAD OF WHAT'S POSSIBLE™

1630 MCCARTHY BLVD
MILPITAS, CA 95035
TEL: (408)432-1900
www.analog.com
ADI CONFIDENTIAL-
FOR CUSTOMER USE ONLY

TITLE: TOP ASSEMBLY DRAWING

MICROPOWER 8/10-BIT DAC

SIZE N/A	IC NO. LTC1660IGN-LTC1665IGN-LTC1664IGN DEMO CIRCUIT 2795A	REV. 2
-------------	---	-----------

FILENAME: DC2795A-2.PCB

SHT 1 OF 1