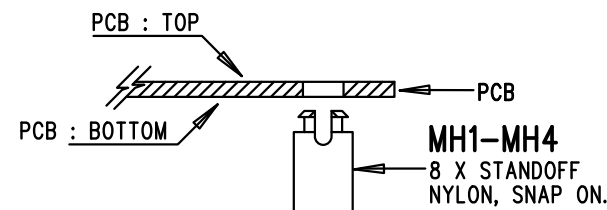


REVISION HISTORY				
ECO	REV	DESCRIPTION	APP. ENG.	DATE
-	2	PRODUCTION	NOE Q.	02-22-16

NOTES: UNLESS OTHERWISE SPECIFIED

1. WORKMANSHIP SHALL BE IN ACCORDANCE WITH IPC-A-610.
2. ASSEMBLY PROCESS SHALL INCLUDE: REFLOW SOLDER TOP SIDE SMD. MAXIMUM SOLDER TEMPERATURE IS 240 DEGREES CELSIUS.
3. PARTS TO OMIT WILL BE SPECIFIED ON THE BILL OF MATERIALS. LOCATIONS OF OMITTED PARTS SHALL BE FREE OF SOLDER. MASK THE SOLDER STENCIL WHERE SMT PARTS ARE OMITTED.
4. DEPANELIZE BOARDS AFTER ASSEMBLY AND ROUTE-OUT THE BREAKOUT TABS ON FOUR SIDES OF THE BOARD EDGE.
5. DO NOT APPLY ANY KIND OF ASSEMBLY STAMP OR QA STAMP TO ANY BOARD.
6. INSTALL STANDOFFS AS SHOWN BELOW:



7. THERE ARE 3 ASSEMBLY TYPES ON THIS DESIGN: DC2459A-A/B/C. SEE BILL OF MATERIALS TO INSTALL THE APPROPRIATE PARTS ON EACH. THEN MARK EACH ASSEMBLY TYPE IN THE WHITE BLOCK AREA WITH BLACK PERMANENT MARKER.
8. INSTALL SHUNTS ON JP1 AND JP2 AS BELOW:
 - a. FOR DC2459A-A/B: ON -5V AND +5V (PINS 1 AND 2).
 - b. FOR DC2459A-C: ON V- AND V+ (PINS 2 AND 3).

APPROVALS

PCB DES.	KIM T.
APP ENG.	NOE Q.
SCALE = NONE	



1630 MCCARTHY BLVD
MILPITAS, CA 95035
PH: (408)432-1900
www.linear.com
LTC CONFIDENTIAL-
FOR CUSTOMER USE ONLY

TITLE: TOP ASSEMBLY DRAWING

16-BIT, 50 MSPS DAC

SIZE	IC NO.	REV.
N/A	LTC1668CG DEMO CIRCUIT 2459A	2
FILENAME: DC2459A-2.PCB		SHT 1 OF 2