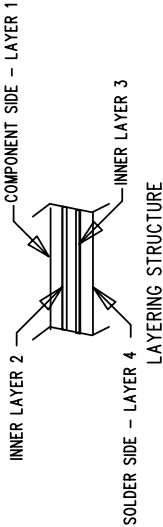


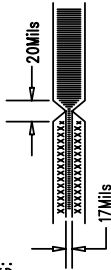
REVISION HISTORY

ECO	REV	DESCRIPTION	DATE	APPROVED
	2	REVISE AND RELAYOUT	2/24/03	

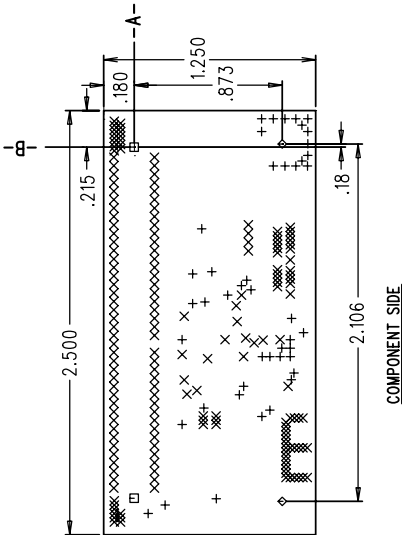


NOTES: UNLESS OTHERWISE SPECIFIED

- ARTWORK P/N DC295B REV 2.
- FAB PER IPC-A-600
- MATERIAL: EPOXY FIBERGLASS, NEMA GRADE FR-4  
FINISHED THICKNESS TO BE .062 +/- .005 INCH  
WITH 2 OZ. COPPER ON TWO OUTER LAYERS AND  
1 OZ. COPPER ON TWO INTERNAL LAYERS.  
FLAMABILITY RATING: 94 V-0 MINIMUM.
- SIZE: CUT TO DIMENSIONS AND TOLERANCES SHOWN.  
-A- AND -B- ARE PRIMARY DATUMS.
- DRILLING: DRILL HOLES PER SCHEDULE. PLATE THROUGH  
HOLES WITH COPPER, .001 INCH THICK MIN. ALL  
HOLE SIZES ARE SPECIFIED AFTER PLATING.  
HOLE LOCATION TOLERANCES ARE +/- .003  
INCH IN RELATION TO CENTER
- FINISH: SMOBC USING LPI BOTH SIDES, GREEN PREFERRABLE.  
SILKSCREEN BOTH SIDES WITH WHITE NON-  
CONDUCTIVE INK.
- FILL UP ALL VIAS WITH SOLDER.
- DROP ALL UNUSED PADS ON INNER LAYERS.
- DO NOT ALTER ARTWORK e.g. TO ADD LOGO OR DATE CODE.
- SCORING:

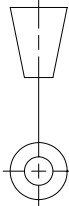


HOLE SIZE CHART				
SYM	SIZE	QTY	PTH	
+	.010+/- .003	45	YES	
X	.015+/- .003	180	YES	
□	.060+/- .003	2	NO	
◇	.188+/- .003	2	NO	
⊗				
⊗				



UNLESS OTHERWISE SPECIFIED  
DIMENSIONS ARE IN INCHES  
TOLERANCES ON ANGLE ±1°  
2 PLACE ±.01 3 PLACE ±.005  
INTERPRET DIM AND TOL  
PER ASME Y14.5M – 1994

THIRD ANGLE PROJECTION



DO NOT SCALE DRAWING

CONTRACT NO

APPROVALS		DATE
DRAWN	L.SANTOS	04/11/02
CHECKED	H.PATEL	2/24/03
APPROVED		
ENGINEER	H.PATEL	2/24/03



1630 McCarthy Blvd.  
Milpitas, CA 95035  
Phone: (408)432-1900  
Fax: (408)434-0507

TITLE

FAB, LTC1705EGN, 3 OUTPUT VID CONTROLLED VRM PCB

SIZE	CAGE CODE	DWG NO	REV
A		DC295B	2
SCALE	1/1	FILENAME: 295Br2.PCB	SHEET 1 OF 1