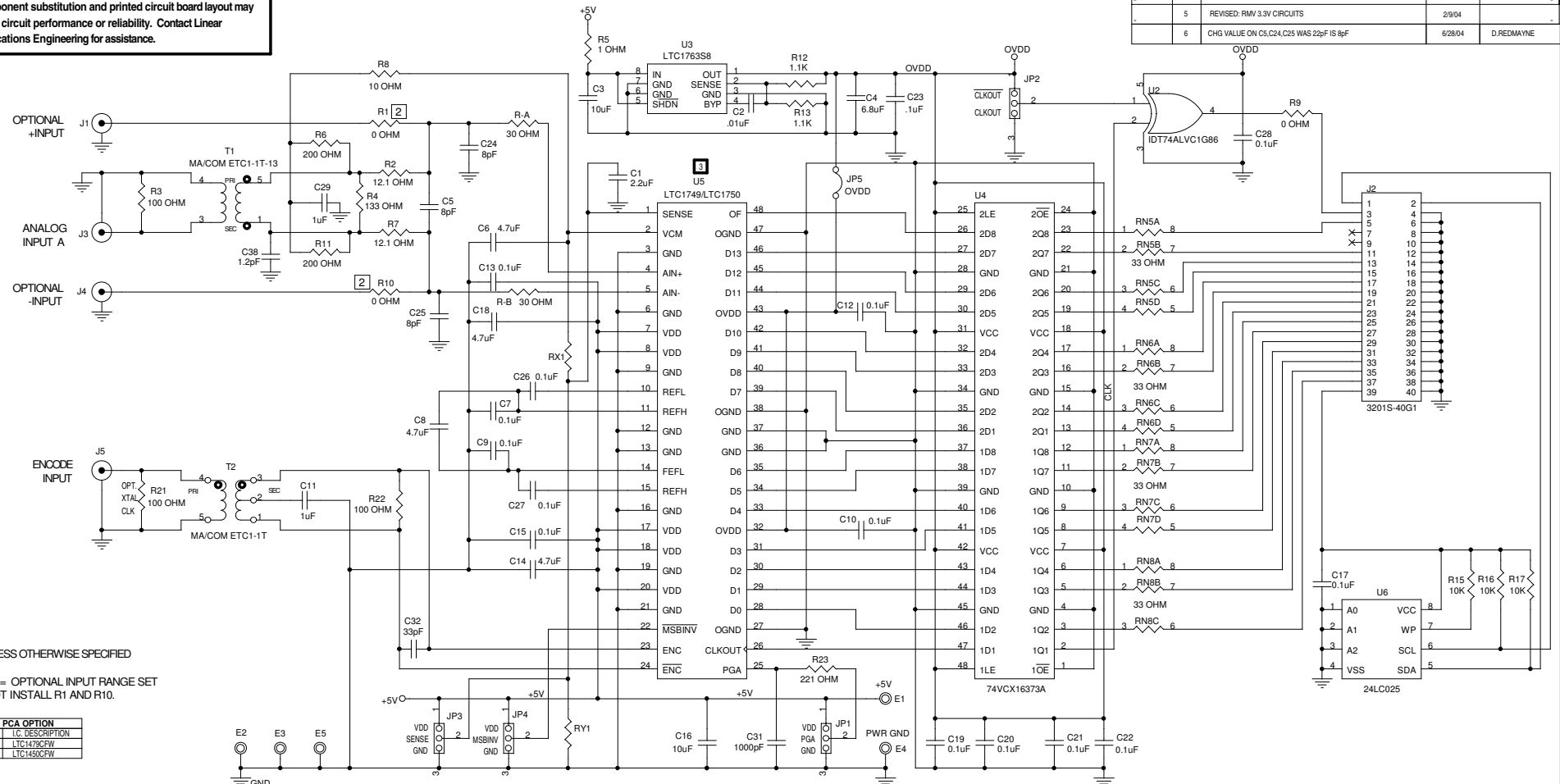


PROPRIETARY DATA:
 This circuit is proprietary to Linear Technology and supplied for use with Linear Technology parts.
CUSTOMER NOTICE: Linear Technology has made a best effort to design a circuit that meets customer-supplied specifications; however, it remains the customer's responsibility to verify proper and reliable operation in the actual application. Component substitution and printed circuit board layout may significantly affect circuit performance or reliability. Contact Linear Technology Applications Engineering for assistance.

LTC CONFIDENTIAL - For Customer Use Only

REVISION HISTORY				
ECO	REV	DESCRIPTION	DATE	APPROVED
	1	PROTOTYPE	7/23/03	
	2	REMOVE C2,17,30; JP6	8/27/03	
	3	ADD C17,30,R6,11-14,23-26,01,U3,U9; CHG T1,U7	11/25/03	
	4	REVISED: ADD C38; CONNECTION U4-24 TO U7-4	1/13/04	
	5	REVISED: RMV 3.3V CIRCUITS	2/9/04	
	6	CHG VALUE ON C5,C24,C25 WAS 22pF IS 8pF	6/28/04	D.REDMAYNE



NOTE: UNLESS OTHERWISE SPECIFIED

- 1. RX, RY = OPTIONAL INPUT RANGE SET
- 2. DO NOT INSTALL R1 AND R10.

PCA OPTION	LTC DESCRIPTION
DASH	LTC1492CPW
-A	LTC1492CPW
-B	LTC1492CPW

UNLESS OTHERWISE SPECIFIED DIMENSIONS ARE IN INCHES TOLERANCE ON ANGLE --- 2 PLACES --- 3 PLACES --- INTERPRET DIM AND TOL PER ASME Y14.5M -1994	CONTRACT NO.				1630 McCarthy Blvd. Milpitas, CA 95035 Phone: (408)432-1900 Fax: (408)434-0507		
	APPROVALS	DATE					
	THIRD ANGLE PROJECTION	DRAWN L.SANTOS	7/22/03	CHECKED D.REDMAYNE	1/13/04	TITLE SCH, LTC1749CFW/LTC1750CFW, 12/14-BIT/80 MSPS ADC PCB	
	DESIGNER		ENGINEER D.REDMAYNE	1/13/04	SIZE	B	
	DO NOT SCALE DRAWING		Monday, June 28, 2004		CAGE CODE		
SCALE: NONE			FILENAME: 699Ar6.DSN	DWG NO	DC699A	REV	6
SHEET 1			OF 1				