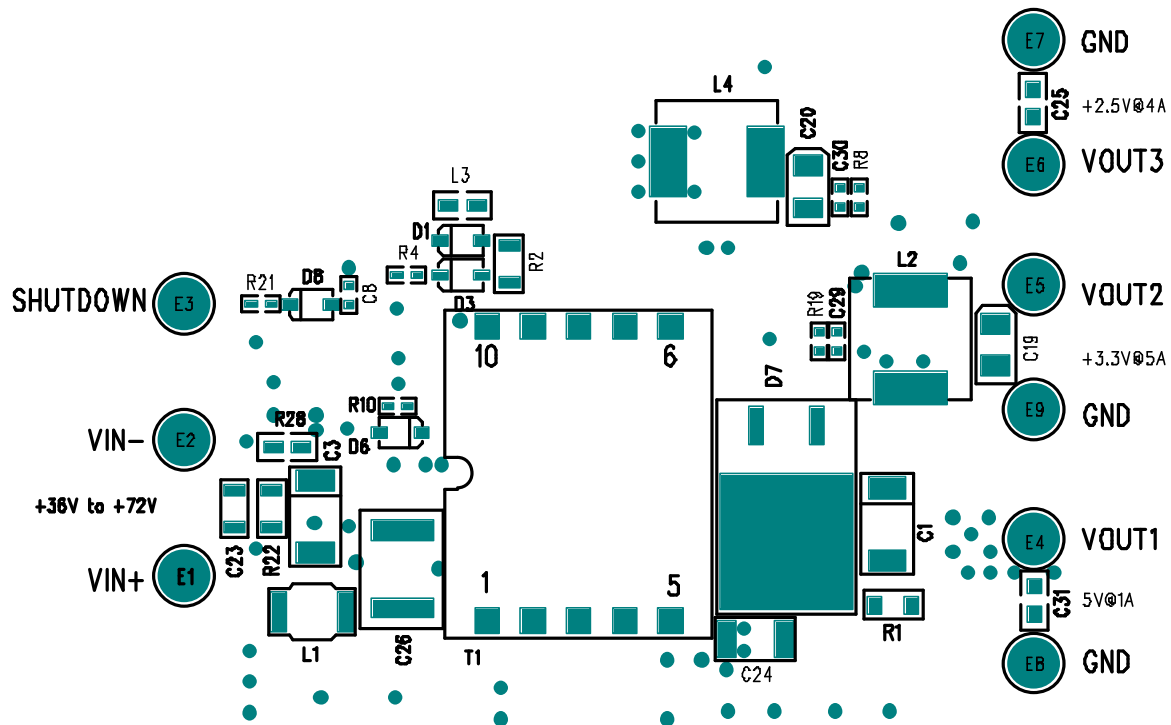




(408) 432-1900
www.linear.com

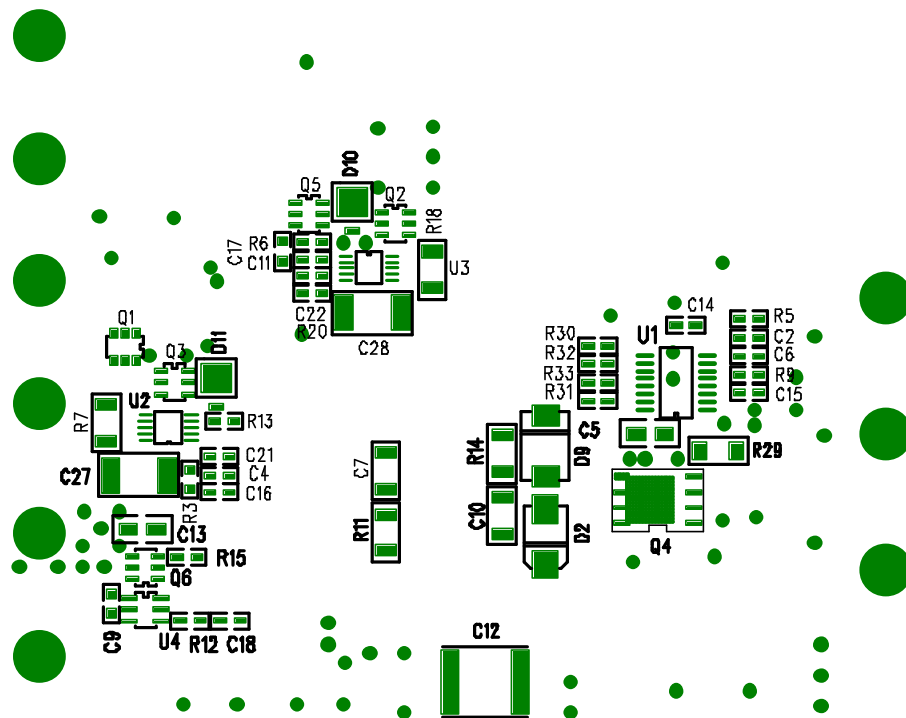
LT1725CGN/LTC1773EMS DEMO CIRCUIT 431A

TELECOM INPUT, ISOLATED 3 OUTPUT DC/DC CONVERTER



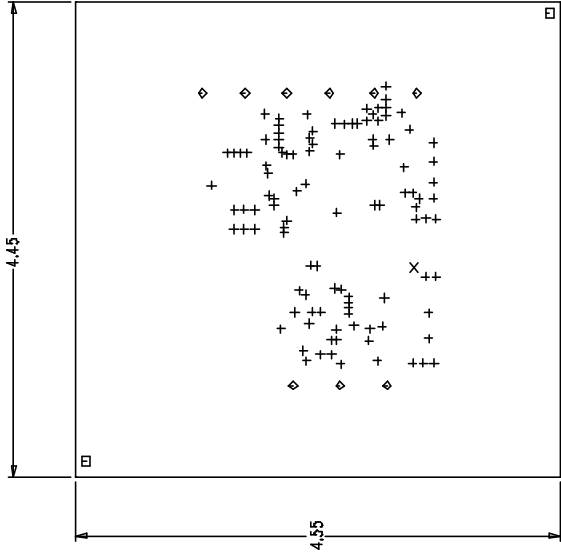
LTC Confidential – For Customer Use Only

COMPANY				LINEAR TECHNOLOGY CORPORATION						
TITLE			A/W, LT1725/LT1773 DEMO PCB		NO.		DC431A	REV		4
L1-COMPONENT SIDE						TOP SILKSCREEN				
DSNR:		MEI		SHT 1 OF 10			DATE: 02/13/03			



FB DC431A RV 4

COMPANY LINEAR TECHNOLOGY CORPORATION			
TITLE A \W\ LT125\ LT123 DEMO PCB		NO. DC431A	
REV 4			
DNR: MEI		SHT 10	
DATE: 03\13\03			



TOLERANCE	SIZE	QTY	SYM	R.10
± 0.003	28	10	+	R.10
± 0.003	35	1	X	R.10
± 0.005	70	2	□	R.10
± 0.005	84	8	◇	R.10

- NOTES: UNLESS OTHERWISE SPECIFIED.
- ARTWORK P/N DC431A REV 4.
 - FAB PER PG-A-600
 - MATERIAL: EPOXY FIBERGLASS, NEMA GRADE FR-4, 0.005 INCH THICKNESS WITH 2 OZ COUPLED LAYER AND TWO INTERNAL LAYERS. 1 OZ COPPER ON TWO INTERNAL LAYERS. FLAMABILITY RATING: 94 V-2 MINIMUM.
 - SIZE: CUT TO DIMENSIONS AND TOLERANCES SHOWN.
 - BOARD: SELECTIVE PLATED BOARD. SOLDER MASK OVER BARE COPPER, COLOR, GREEN LPI, WHITE IN MIRROR (OPTION) BOTH SIDES. SOLDER MASK COMPONENT SIDE WITH WHITE NON-PLATING THIN ALL HOLES WITH COPPER MIN PLATING THICKNESS: 1 OZ, EXCEPT WHERE PLATING NOT REQUIRED.
 - DRILL: ALL HOLES SHALL BE DRILLED ± 0.003 INCH WITH RESPECT TO CTR. OF DRILLED PAD. ALL HOLES FINISHED SIZE AFTER PLATING.
 - DROP ALL UNUSED PADS ON INNER LAYERS.
 - DO NOT ALTER ARTWORK e.g. TO ADD LOGO OR DATE CODE.

UNLESS OTHERWISE SPECIFIED DIMENSIONS ARE IN INCHES TOLERANCES ON ANGLE .31° 2 PLACE ± 0.1 3 PLACE ± 0.05 INTERPRET DIM AND TOL PER ASME Y14.5M - 1994		CONTRACT NO		DATE	
THIRD ANGLE PROJECTION		APPROVALS		08-21-01	
		DRAWN		WEI	
		DESIGNED			
		APPROVED			
		DRAWN			
DO NOT SCALE DRAWING		SIZE		CAGE CODE	
		B		DC431A	
SCALE		1/1		FLENING 131A-4708	
2		1		SHEET 1 OF 1	
REV		4		REV	
4		4		4	

LINEAR TECHNOLOGY
FAB, L1725CGN/LTC173EMS TELECOM
INPUT, ISOLATED 3 OUTPUT
CONVERTER, 30W

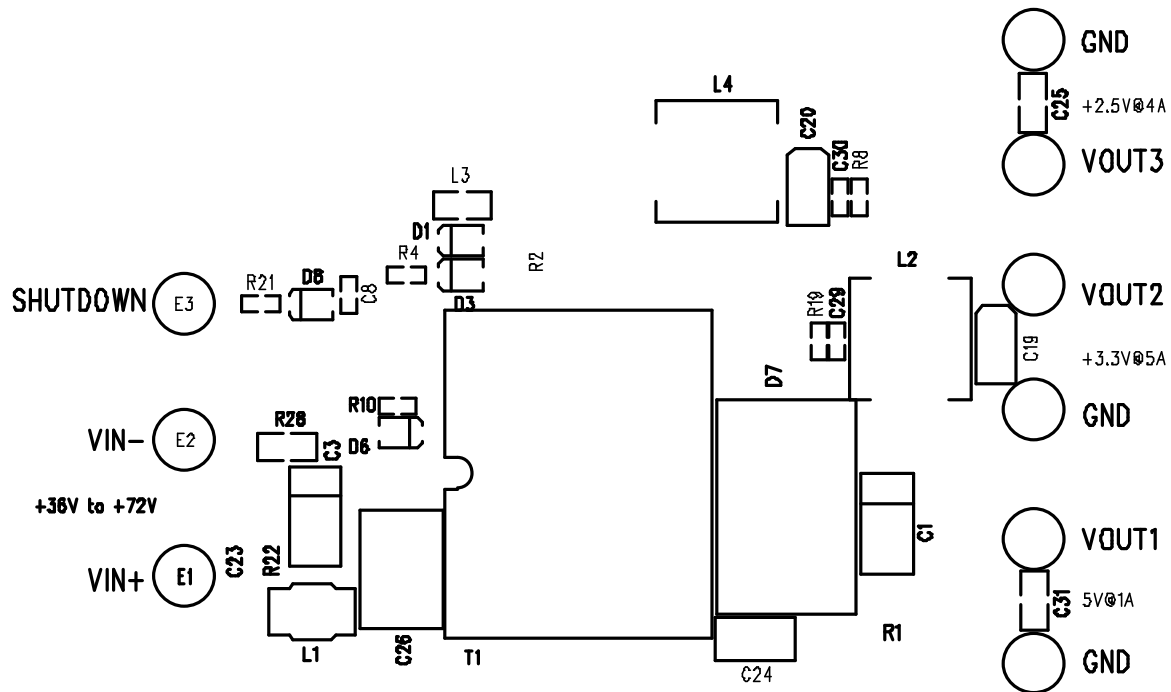
830 McCarthy Blvd.
Milpitas, CA 95035
Phone: (408) 352-1900
Fax: (408) 354-0007



(408) 432-1900
www.linear.com

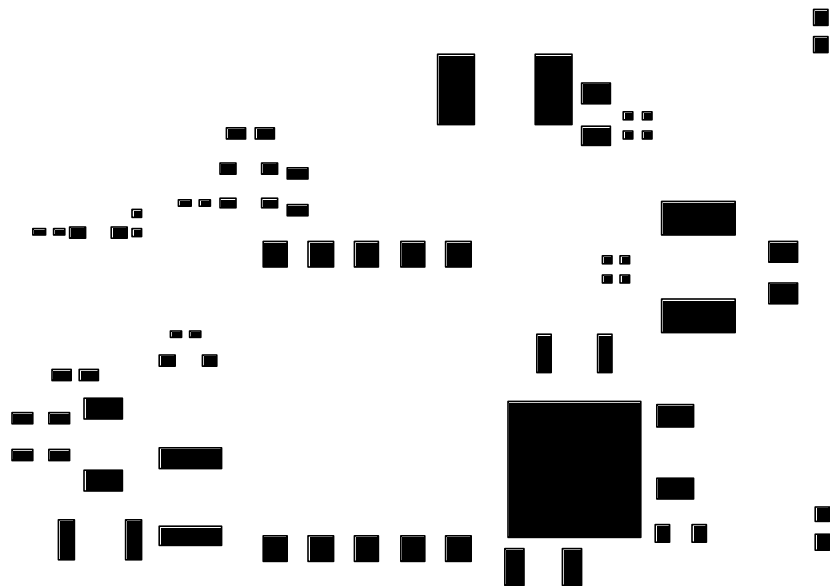
LT1725CGN/LTC1773EMS DEMO CIRCUIT 431A

TELECOM INPUT, ISOLATED 3 OUTPUT DC/DC CONVERTER

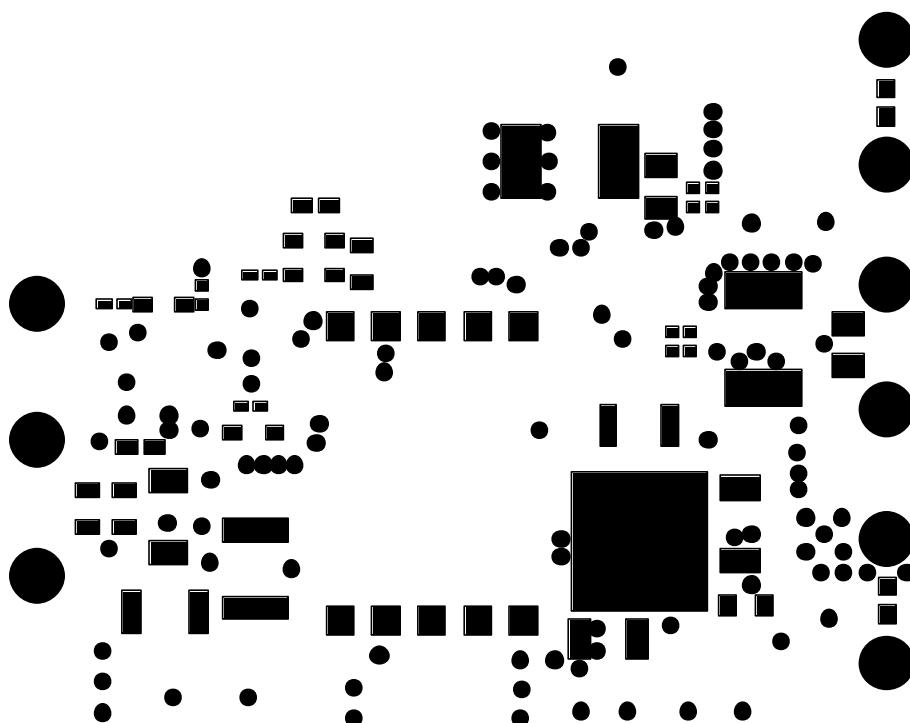


LTC Confidential – For Customer Use Only

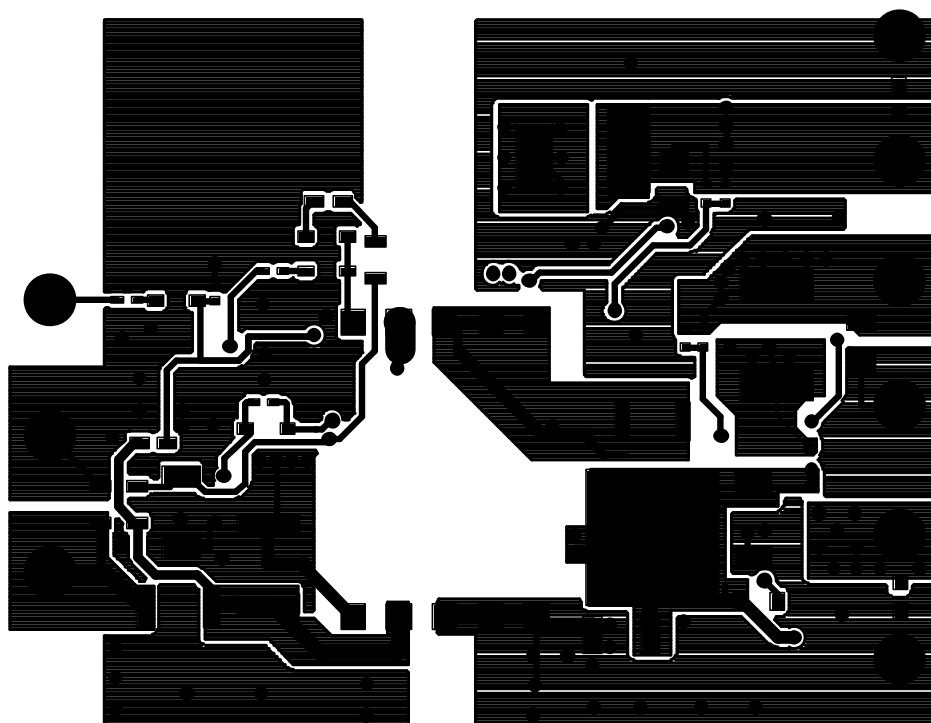
COMPANY LINEAR TECHNOLOGY CORPORATION			
TITLE A/W, LT1725/LT1773 DEMO PCB		NO. DC431A	REV 4
		TOP SILKSCREEN	
DSNR: MEI		SHT OF 10	DATE: 11/18/02



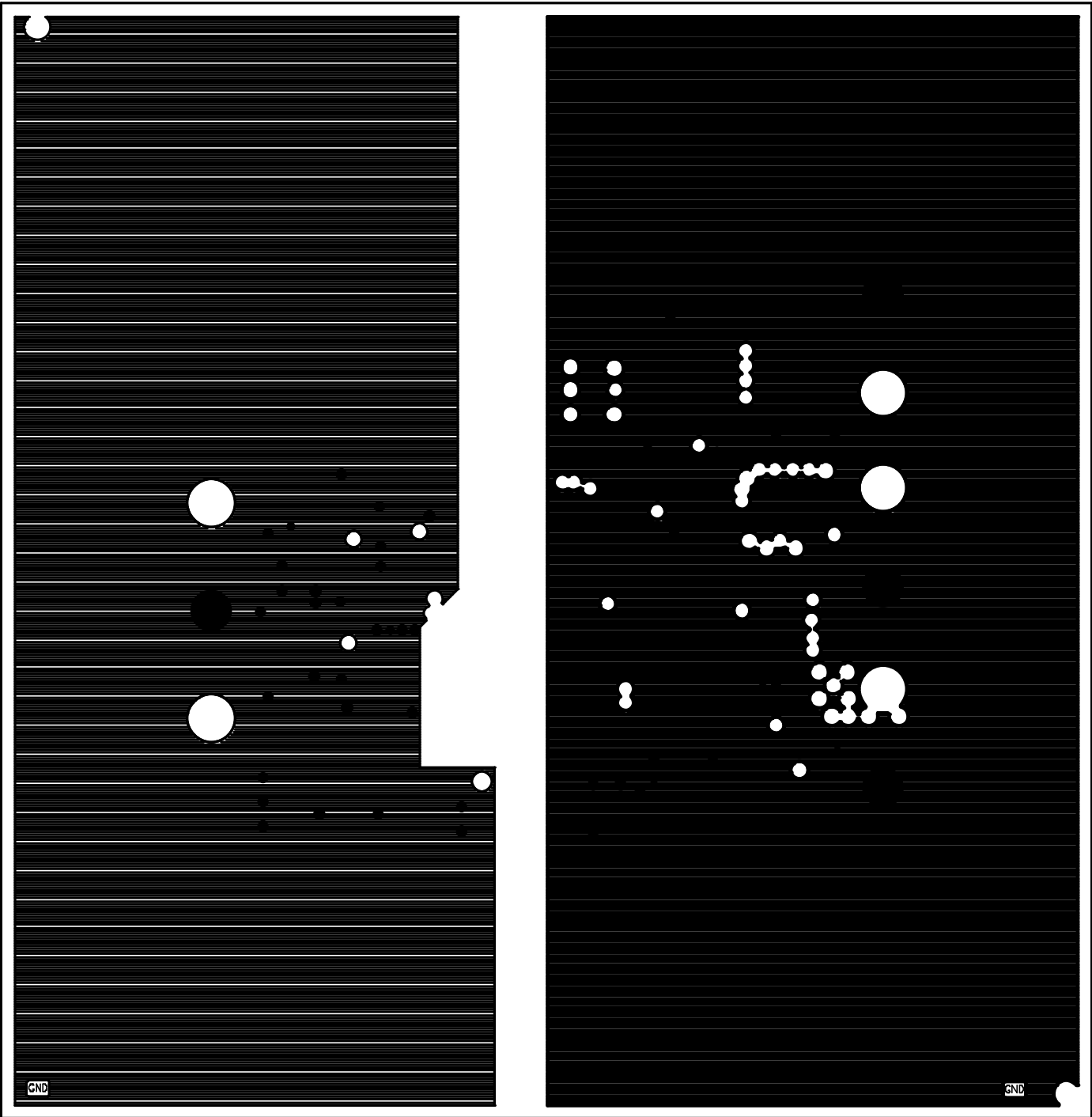
COMPANY LINEAR TECHNOLOGY CORPORATION			
TITLE A/W, LT1725/LT1773 DEMO PCB		NO. DC431A	REV 4
		TOP SOLDER PASTE	
DSNR: MEI	SHT OF 10	DATE: 11/18/02	



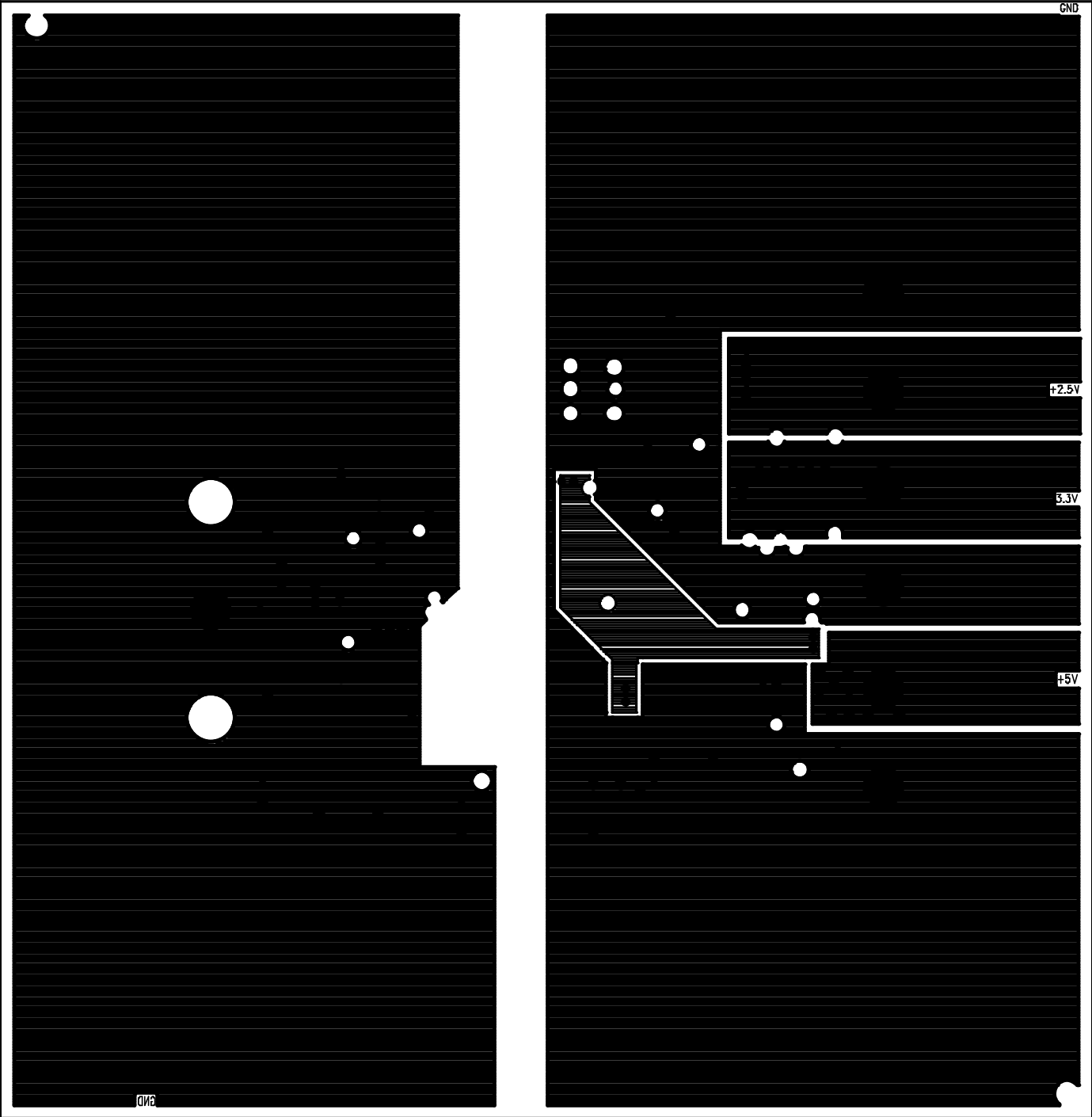
COMPANY LINEAR TECHNOLOGY CORPORATION			
TITLE A/W, LT1725/LT1773 DEMO PCB		NO. DC431A	REV 4
TOP SOLDERMASK			
DSNR: MEI	SHT OF 10	DATE: 11/18/02	



COMPANY LINEAR TECHNOLOGY CORPORATION			
TITLE A/W, LT1725/LT1773 DEMO PCB		NO. DC431A	REV 4
L1-COMPONENT SIDE			
DSNR: MEI	SHT 1 OF 10	DATE: 11/18/02	



COMPANY LINEAR TECHNOLOGY CORPORATION			
TITLE A/W, LT1725/LT1773 DEMO PCB		NO. DC431A	REV 4
L2-GND PLANE			
DSNR: MEI	SHT 2 OF 10		DATE: 11/18/02

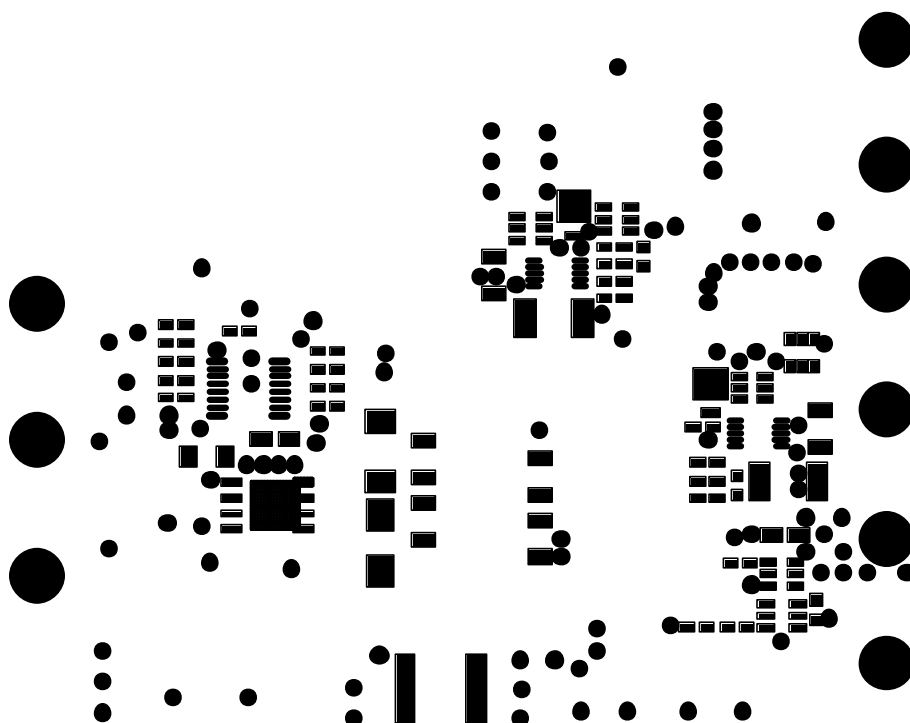


COMPANY LINEAR TECHNOLOGY CORPORATION			
TITLE A/W, LT1725/LT1773 DEMO PCB		NO. DC431A	REV 4
		L3-PLANE	
DSNR: MEI	SHT 3 OF 10		DATE: 11/18/02

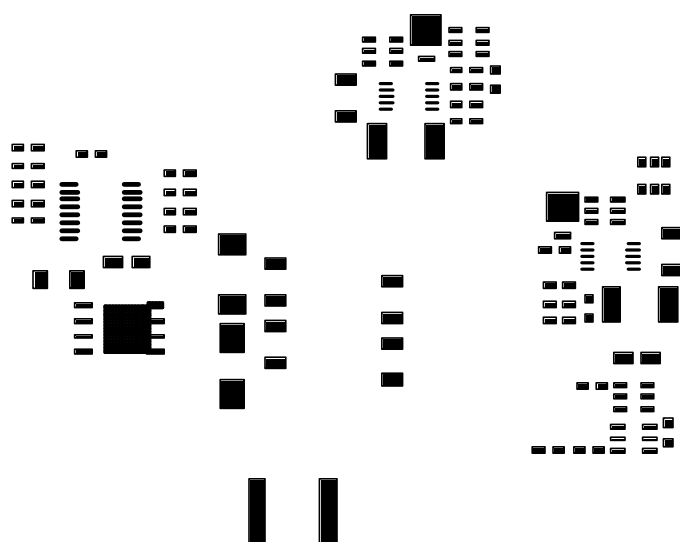


4 VR A1E431V RA 4

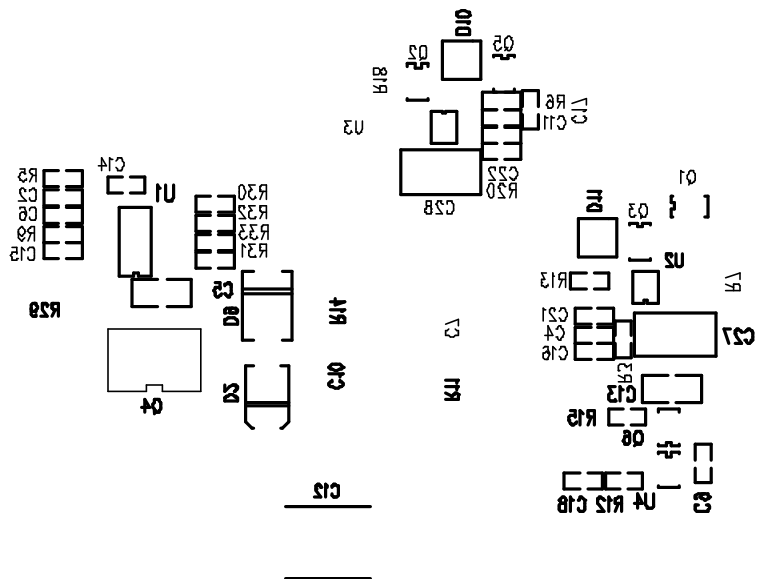
COMPANY LINEAR TECHNOLOGY CORPORATION			
TITLE A/W, LT1725/LT1773 DEMO PCB		NO. DC431A	REV 4
		L4-SOLDER SIDE	
DSNR: MEI	SHT 4 OF 10		DATE: 11/18/02



COMPANY LINEAR TECHNOLOGY CORPORATION			
TITLE A/W, LT1725/LT1773 DEMO PCB		NO. DC431A	REV 4
		BTTM SOLDERMASK	
DSNR: MEI	SHT OF 10	DATE: 11/18/02	



COMPANY		LINEAR TECHNOLOGY CORPORATION					
TITLE		A/W, LT1725/LT1773 DEMO PCB		NO.	DC431A	REV	4
				BTM SOLDER PASTE			
DSNR:		MEI	SHT	OF	10	DATE: 11/18/02	



COMPANY LINEAR TECHNOLOGY CORPORATION			
TITLE A/W, LT1725/LT1773 DEMO PCB		NO. DC431A	REV 4
		BTTM 21KSCREN	
DSNR: MEI	SHT OF 10	DATE: 11/18/02	