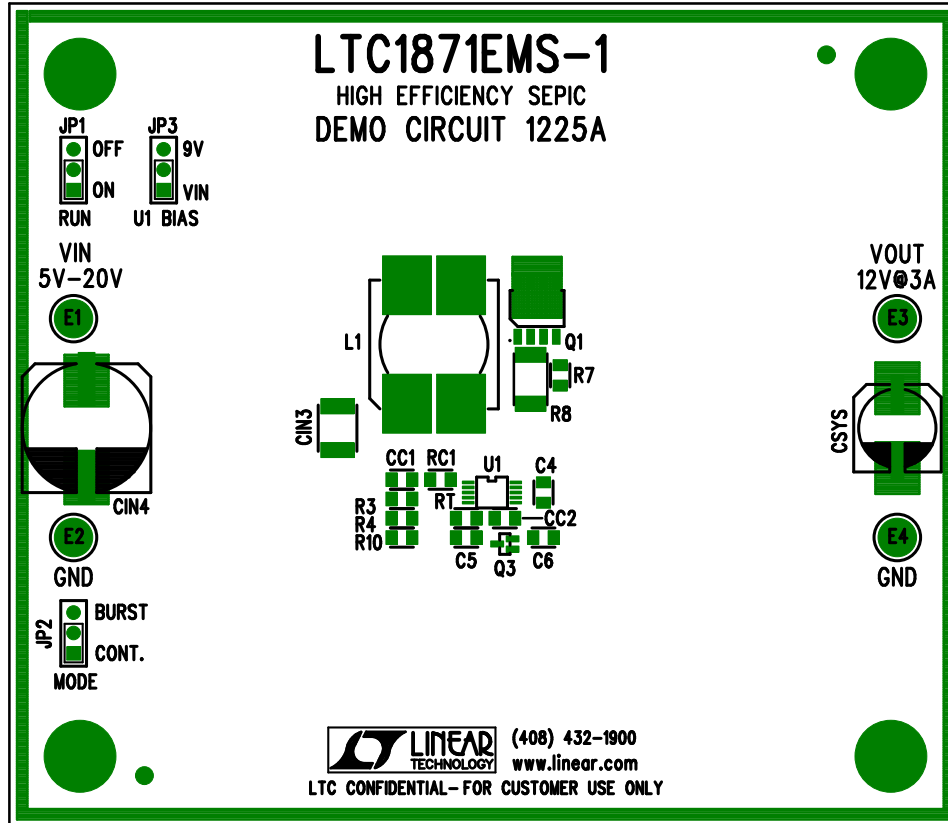
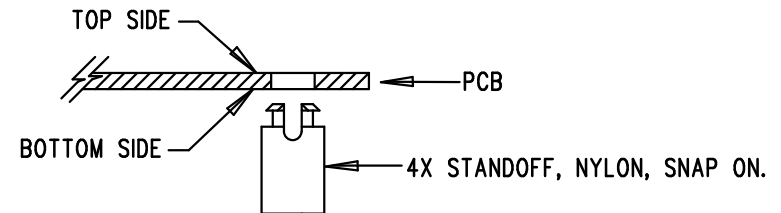


REVISIONS			
REV	DESCRIPTION	APPR	DATE
A-1	2ND PROTOTYPE	GP	08-22-07



## NOTES: UNLESS OTHERWISE SPECIFIED

1. WORKMANSHIP SHALL BE IN ACCORDANCE WITH IPC-A-610.
2. INSTALL SHUNT ON JP1-JP3 PINS 1 AND 2.
3. DEPANELIZE BOARDS AFTER ASSEMBLY AND ROUTE-OUT THE BREAKOUT TABS ON FOUR SIDES OF THE BOARD EDGE.
4. ASSEMBLY PROCESS SHALL INCLUDE: REFLOW SOLDER TOP SIDE SMD.
5. INSTALL 4 STANDOFFS AT 4 CORNERS AS SHOWN BELOW:



## APPROVALS

	INIT	DATE
DRAWN		
CHECK		
DESIGN	KIM T.	08-22-07
ENGR	GORAN P.	08-22-07
SCALE = NONE		



1630 MCCARTHY BLVD  
MILPITAS, CA 95035  
PH: (408)432-1900  
LTC CONFIDENTIAL-  
FOR CUSTOMER USE ONLY

TITLE: TOP ASSEMBLY DRAWING

**HIGH EFFICIENCY SEPIC**

SIZE	REV.
A	A-1

DEMO  
DC1225A-1 \* LTC1871EMS-1

SHT 1 of 2