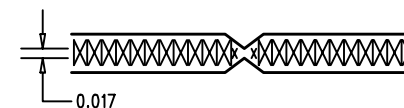


REVISIONS			
REV	DESCRIPTION	APPR	DATE
A	PROTOTYPE RELEASE		

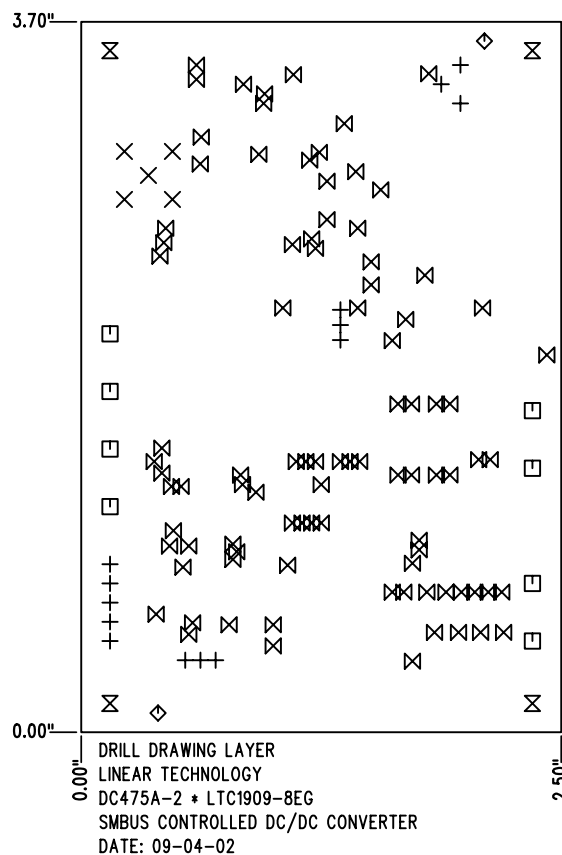
SIZE	QTY	SYM	PLTD
0.035	14	+	PLTD
0.055	5	×	PLTD
0.094	8	□	PLTD
0.07	2	◇	NPLTD
0.125	4	⊗	PLTD
0.015	92	⊗	PLTD

NOTES : Unless Otherwise Specified


1. MATERIAL : FR4 OR EQUIVALENT EPOXY, 2 OZ. COPPER CLAD
THICKNESS .062 +/- .006 TOTAL OF 4 LAYERS.
2. FINISH : ALL PLATED HOLES .001 MIN. / .0015 MAX. COPPER PLATE
ELECTRODEPOSITED TIN-LEAD COMPOSITION
BEFORE REFLOW , SOLDER MASK OVER BARE COPPER (SMOBC).
3. SOLDER MASK : BOTH SIDES USING LPI OR EQUIVALENT.
4. SILKSCREEN : USING WHITE NON-CONDUCTIVE EPOXY INK.
5. UNUSED SMD COMPONENTS SHOULD BE FREE OF SOLDER.
6. SCORING:



7. PLEASE LOOK AT THE README FILE FOR THE OTHER REQUIREMENTS.



SHOWN FROM COMPONENT SIDE

APPROVALS			 LINEAR TECHNOLOGY 1630 McCarthy Blvd. Milpitas, CA 95035 PH: (408)432-1900	
	INIT	DATE		
DRAWN			TITLE: FABRICATION DRAWING SMBUS CONTROLLED DC/DC CONVERTER	
CHECK				
DESIGN	KIM T.	09-04-02		
ENGR	HARESH P.	09-04-02		
			SIZE	REV.
			A	A
SCALE = NONE			DC475A-2 * LTC1909-8EG	
			DES- 0000	SHT 1 of 1