

Silkscreen Top

LINEAR TECHNOLOGY (408) 432-1900
www.linear.com
DC1525A-LTC2171IUKG FAMILY
QUAD ADC FAMILY
DATE: 10-29-09

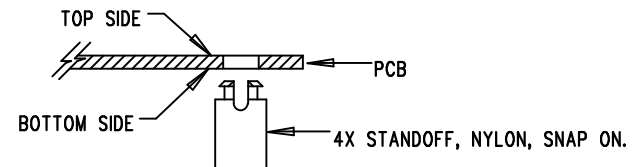
6. MARK EACH LTC PART NUMBER AND ASSEMBLY TYPE WITH BLACK PERMANENT MARKER AS SHOWN IN TABLE BELOW:

ASSY	U1	BITS	Mbps
-A	LTC2175IUKG-14	14	125
-B	LTC2174IUKG-14	14	105
-C	LTC2173IUKG-14	14	80
-D	LTC2172IUKG-14	14	65
-E	LTC2171IUKG-14	14	40
-F	LTC2170IUKG-14	14	25
-G	LTC2175IUKG-12	12	125
-H	LTC2174IUKG-12	12	105
-I	LTC2173IUKG-12	12	80
-J	LTC2172IUKG-12	12	65
-K	LTC2171IUKG-12	12	40
-L	LTC2170IUKG-12	12	25

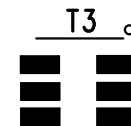
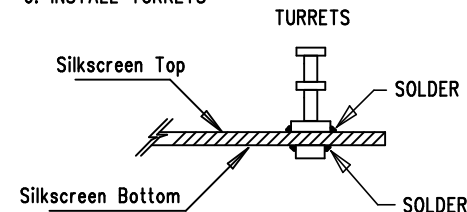
REVISION HISTORY				
ECO	REV	DESCRIPTION	APPR	DATE
	2	PRODUCTION	CLARENCE	10-29-09

NOTES: UNLESS OTHERWISE SPECIFIED

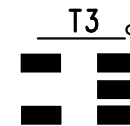
- WORKMANSHIP SHALL BE IN ACCORDANCE WITH IPC-A-610.
- INSTALL SHUNTS AS SHOWN. J2 : EN, J13 : SER, J5,J8,J14,J15 :OPT
- DEPANELIZE BOARDS AFTER ASSEMBLY AND ROUTE-OUT THE BREAKOUT TABS ON FOUR SIDES OF THE BOARD EDGE.
- ASSEMBLY PROCESS SHALL INCLUDE: REFLOW SOLDER TOP SIDE SMD.
- INSTALL 4 STANDOFFS AT 4 CORNERS AS SHOWN BELOW:




- INSTALL TURRETS



FOR 6 PIN PARTS



FOR 5 PIN PARTS

APPROVALS			 LINEAR TECHNOLOGY	1630 MCCARTHY BLVD MILPITAS, CA 95035 PH: (408)432-1900 LTC CONFIDENTIAL- FOR CUSTOMER USE ONLY		
	INIT	DATE				
PCB DES.	ANTONINA	10-29-09				
ENG.	CLARENCE	10-29-09				
			TITLE: TOP ASSEMBLY DRAWING			
			QUAD ADC FAMILY			
			SIZE A		IC NO. LTC217XIUKG-X DEMO CIRCUIT 1525A	REV 3
SCALE = NONE			FILENAME: DC1525A		SHT 1 of 2	