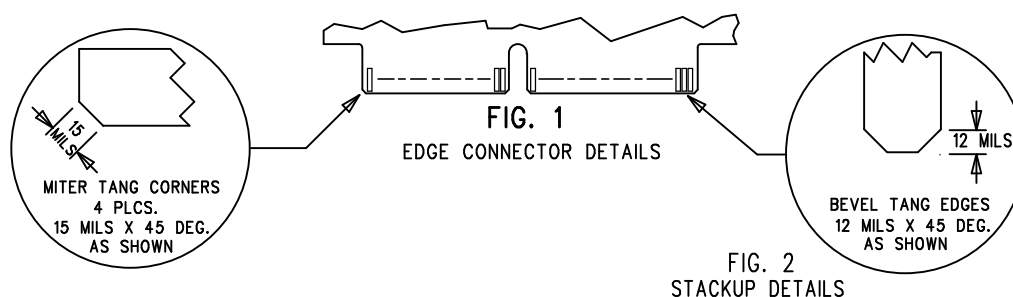
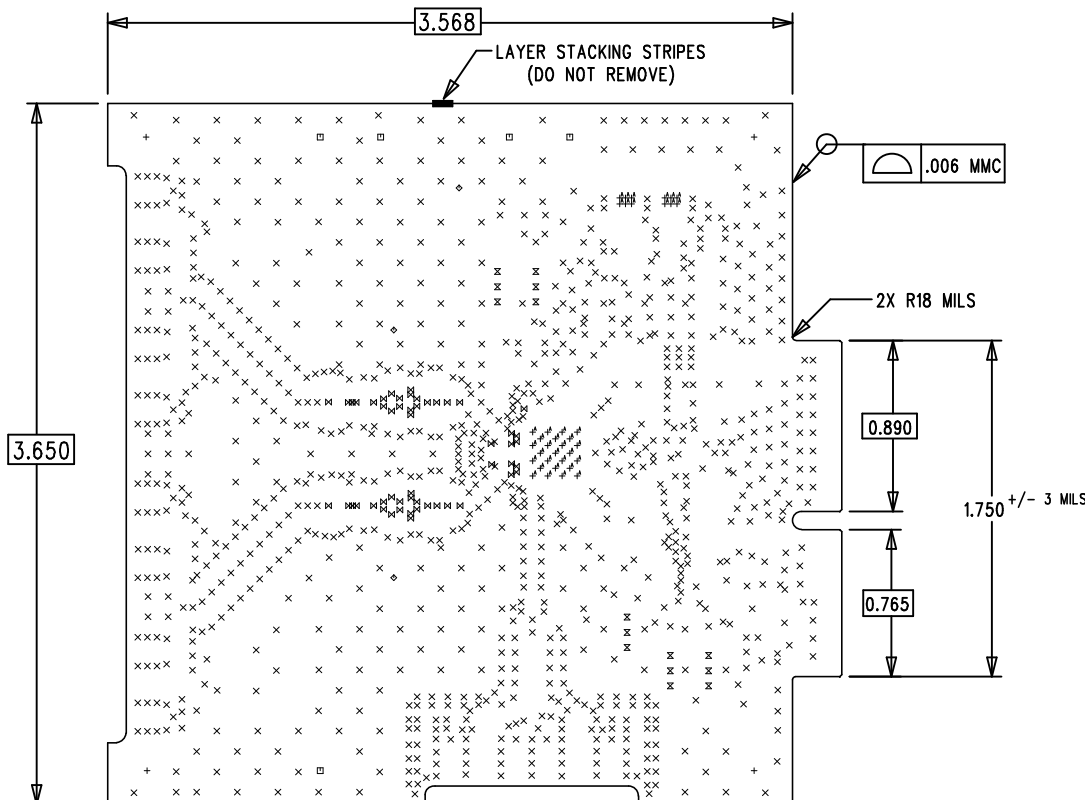


REVISION HISTORY				
ECO	REV	DESCRIPTION	APPROVAL	DATE
-	1	PRODUCTION	C.MAYOTT	04/24/12

NOTES: UNLESS OTHERWISE SPECIFIED

- FAB PER IPC-A-600.
- MATERIAL: -LEAD FREE ASSEMBLY COMPLIANT, FR-408HR
-FINISHED THICKNESS TO BE 0.062" +/- .005"
-TOTAL OF 6 LAYERS WITH FINISHED COPPER THICKNESS 1.5 OZ. OUTER LAYERS, 1 OZ. INNER LAYERS.
-FLAMMABILITY RATING: 94 V-0 MINIMUM.
- SIZE: CUT TO DIMENSIONS AND TOLERANCES SHOWN.
0.00" ARE PRIMARY DATUMS.
- DRILLING: -DRILL HOLES PER SCHEDULE. PLATE THROUGH HOLES WITH COPPER, 0.001" THICK MIN.
-ALL HOLE SIZES ARE SPECIFIED AFTER PLATING.
-HOLE LOCATION TOLERANCES ARE +/-0.003" IN RELATION TO CENTER
- FINISH: -SMOBC USING LPI BOTH SIDES, COLOR BLACK.
-SILKSCREEN LEGENDS SHALL BE WHITE NON-CONDUCTIVE EPOXY INK.
-PLATING SHALL BE IMMERSION GOLD BOTH SIDES.
-EDGE CONNECTOR FINGERS SHALL HAVE HARD GOLD PLATE TO MINIMUM 30 MICROINCHES PER MIL-G-45204, TYPE II, CLASS 1, GRADE C, OVER 200 MICROINCHES LOW STRESS NICKEL PER QQ-N-290, CLASS 2.
-EDGE CONNECTOR SHALL HAVE MITERED CORNERS AND BEVELED EDGES AS PER FIGURE 1, "EDGE CONNECTOR DETAILS".
- BOARD USES FOUR DIFFERENT FIXED IMPEDANCE DESIGN TECHNIQUES AS FOLLOWS: (REFER TO FIG.2, "STACKUP DETAILS")
 - ALL 30 MIL WIDE TRACES ON TOP SIDE ARE DESIGNED AS SURFACE MICROSTRIP, AND SHALL HAVE AN IMPEDANCE OF 50 OHMS +/- 10%, MEASURED FROM LAYER 1 TO THE LAYER 3, AT A FREQUENCY OF 2 GHZ.
 - 6 MIL WIDE DIFFERENTIAL PAIRS ON THE TOP SIDE SHALL HAVE A DIFFERENTIAL IMPEDANCE OF 100 OHMS +/- 10%, AS MEASURED FROM LAYER 1 TO LAYER 2, AT A FREQUENCY OF 2 GHZ.
 - 6 MIL WIDE TRACES ON THE TOP SIDE CONNECTING J1,J2,J5,J6, R47 AND R53 ARE DESIGNED AS SURFACE MICROSTRIP, AND SHALL HAVE AN IMPEDANCE OF 100 OHMS +/- 10%, MEASURED FROM LAYER 1 TO LAYER 3, AT A FREQUENCY OF 2 GHZ.
 - THE 8 MIL WIDE DIFFERENTIAL PAIRS ON LAYER 1 CONNECTED TO L7, L8, L16 AND L22 SHALL HAVE A DIFFERENTIAL IMPEDANCE OF 100 OHMS +/- 10%, MEASURED FROM LAYER 1 TO LAYER 2, AT A FREQUENCY OF 2 GHZ.
- DO NOT ALTER ARTWORK e.g. TO ADD LOGO OR DATE CODE.
PAD SIZE CAN BE MODIFIED TO MEET END FINISH.
- PCBS ARE TO BE RoHS COMPLIANT.
- PCB'S SHALL BE PANELIZED USING ROUTE AND RETAIN METHOD. THERE SHALL BE TWO RETAINING TABS ON ALL BOARD EDGES GREATER THAN 2.5 INCHES LONG. RETAINING TABS SHALL NOT BE PLACED WITHIN SIDE-LAUNCH CONNECTOR FOOTPRINTS.
- ALL 12 MIL DIA. VIAS, QTY 37, SHALL BE IPC-4761 TYPE VII, CAPPED AND FILLED WITH CONDUCTIVE FILLER.
- DO NOT INCREASE THE SOLDERMASK APERTURE SIZE FOR THE SOLDERMASK DEFINED PADS ASSOCIATED WITH THESE PARTS: U2,U3,U4,U6.



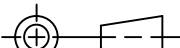

DRILL CHART

SIZE	QTY	SYM	PLATED	TOL
185	4	+	NO	+/- 6 MILS
10	1001	X	YES	+/- 3 MILS
95	5	□	YES	+/- 3 MILS
65	3	◇	YES	+/- 3 MILS
35	15	⊗	YES	+/- 3 MILS
8	53	⊗	YES	+/- 3 MILS
12	37	⊕	YES	+/- 3 MILS

1.5 OZ.	FR408-HR	LAYER 1- TOP SIDE
6.0 MILS	FR408-HR	LAYER 2
2.0 OZ.	FR408-HR	LAYER 3
10 MILS	FR408-HR	LAYER 4
1 OZ.	FR408-HR	LAYER 5
10 MILS	FR408-HR	LAYER 6- BOTTOM SIDE
2.0 OZ.	FR408-HR	
6.0 MILS	FR408-HR	
1.5 OZ.	FR408-HR	

.062" +/- 10%
6 LAYERS

THICKNESS

<div>UNLESS OTHERWISE SPECIFIED</div> <div>DIMENSIONS ARE IN INCHES</div> <div>TOLERANCES:</div> <div>0.XX" = ±0.01"</div> <div>0.XXX" = ±0.005"</div> <div>INTERPRET DIM AND TOL PER ASME Y14.5M-1994</div> <div>THIRD ANGLE PROJECTION</div> <div></div>	APPROVALS		<div> LINEAR TECHNOLOGY</div> <div>1630 MCCARTHY BLVD MILPITAS, CA 95035 PH: (408)432-1900 www.linear.com LTC CONFIDENTIAL- FOR CUSTOMER USE ONLY</div>
	PCB DES.	M.HAWKINS	
	APP ENG.	CLARENCE M.	
TITLE: FABRICATION DRAWING			
LTC2185 AND LTC6409			
COMBO BOARD			
SIZE N/A	IC NO. LTC2185IUP, LTC6409IUDB DEMO CIRCUIT 1945A	REV 2	
SCALE = NONE		FILENAME: DC1945A-2.PCB	
		SHT 1 OF 1	