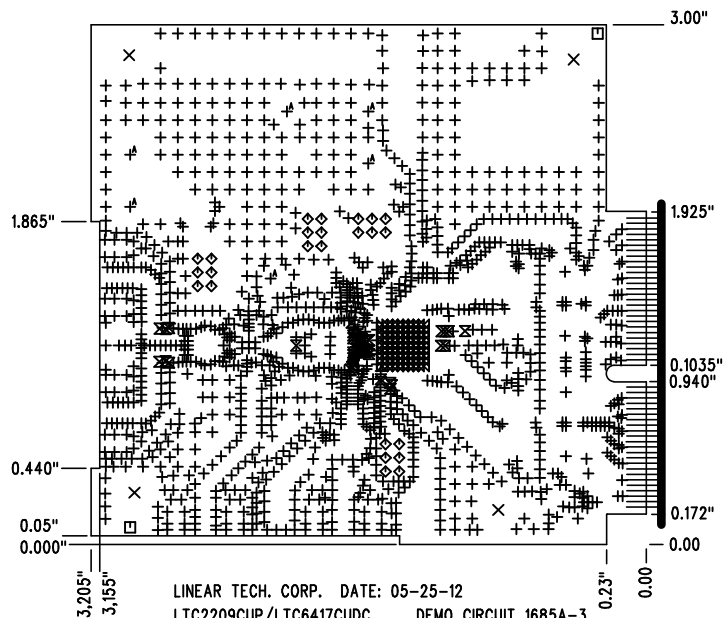
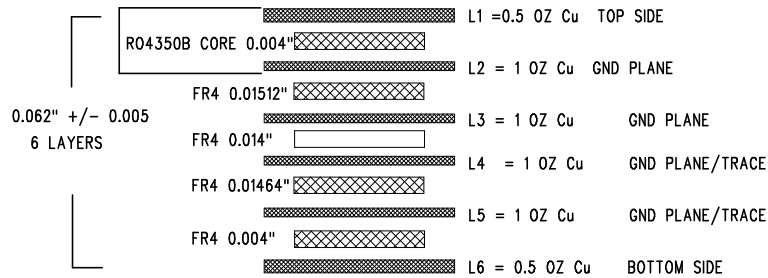


LAYER STRUCTURE



LINEAR TECH. CORP. DATE: 05-25-12
LTC2209CUP/LTC6417CUDC DEMO CIRCUIT 1685A-3
16-BIT, ADC BUFFER + ADC

SIZE	QTY	SYM	PLATED	TOL
0.008	1341	+	YES	+/-0.003
0.187	4	X	NO	+/-0.003
0.07	2	□	NO	+/-0.003
0.034	24	◇	YES	+/-0.003
0.006	48	⊗	YES	+/-0.003
0.012	81	⊗	YES	+/-0.003
0.063	6	⊕ ^A	YES	+/-0.003

REVISION HISTORY

ECO	REV	DESCRIPTION	APP. ENG.	DATE
-	3	3RD PROTOTYPE	JOSEF A.	05-25-12

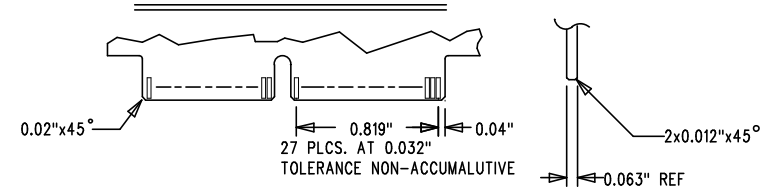
NOTES: UNLESS OTHERWISE SPECIFIED

- FAB PER IPC-A-600.
- MATERIAL: -LEAD FREE ASSEMBLY COMPLIANT, ISOLA FR-370HR OR EQUIVALENT.
BETWEEN LAYER 1 AND 2 R04400 SERIES RODERS PREPREG 4 mills

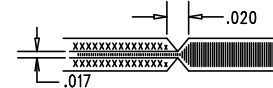
-FINISHED THICKNESS TO BE 0.062" +/- .005"
-TOTAL OF 6 LAYERS WITH 0.5 OZ. CU ON THE OUTER LAYERS AND 1 OZ. CU ON THE INNER LAYERS.
-FLAMMABILITY RATING: 94 V-0 MINIMUM.

- SIZE: CUT TO DIMENSIONS AND TOLERANCES SHOWN.
0.00" ARE PRIMARY DATUMS.
- DRILLING: -DRILL HOLES PER SCHEDULE. PLATE THROUGH HOLES WITH COPPER, 0.001" THICK MIN.
-ALL HOLE SIZES ARE SPECIFIED AFTER PLATING.
-HOLE LOCATION TOLERANCES ARE +/-0.003" IN RELATION TO CENTER
- FINISH: -SMOBC USING LPI BOTH SIDES, -COLOR BLACK
-GOLD IMMERSION BOTH SIDES.
-FOR SILKSCREENS: USE WHITE NON-CONDUCTIVE INK.
FINGER AREA: GOLD PLATE TO MIN. OF 0.00003".
PER MIL-G-45204, TYP II, CL1, GRADE C, OVER 0.0002" LOW STRESS NICKEL PER QQ-N-290, CL2.

GOLD FINGER CONNECTOR



- DO NOT ALTER ARTWORK e.g. TO ADD LOGO OR DATE CODE.
PAD SIZE CAN BE MODIFIED TO MEET END FINISH.
- PCBS ARE TO BE RoHS COMPLIANT.
- SCORING FOR PANELIZED PCB (PRODUCTION FAB ONLY):



UNLESS OTHERWISE SPECIFIED		APPROVALS			
DIMENSIONS ARE IN INCHES		PCB DES.	AK		
TOLERANCES:		APP ENG.	JOSEF A.	TITLE: FABRICATION DRAWING	
0.XX" =± 0.01"				16-BIT, ADC BUFFER + ADC	
0.XXX" =± 0.005"				SIZE	IC NO. LTC2209CUP/LTC6417CUDC
INTERPRET DIM AND TOL PER ASME Y14.5M-1994				N/A	DEMO CIRCUIT 1685A
THIRD ANGLE PROJECTION				REV	3
		SCALE = NONE		FILENAME: DC1685A-3.PCB	
				SHT 1 OF 1	

1630 MCCARTHY BLVD
MILPITAS, CA 95035
PH: (408)432-1900
www.linear.com
LTC CONFIDENTIAL-
FOR CUSTOMER USE ONLY