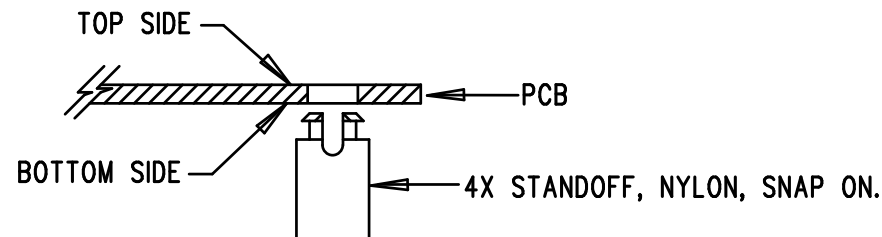


REVISIONS			
REV	DESCRIPTION	APPR	DATE
A-1	FINAL FABRICATION	CM	02-04-08

## NOTES: UNLESS OTHERWISE SPECIFIED

1. WORKMANSHIP SHALL BE IN ACCORDANCE WITH IPC-A-610.
2. INSTALL SHUNT ON JP1 PINS 1 AND 2.
3. DEPANELIZE BOARDS AFTER ASSEMBLY AND ROUTE-OUT THE BREAKOUT TABS ON FOUR SIDES OF THE BOARD EDGE.
4. ASSY PROCESSES SHALL INCLUDE: REFLOW SOLDER TOP SIDE SMD.
5. INSTALL 4 STANDOFFS AT 4 CORNERS AS SHOWN BELOW:



6. USE BLACK PERMANENT MARKER TO WRITE ON THE WHITE BLOCK AREAS BASED ON THE TABLE BELOW:

DC1350A	U1	BITS	MSPS
-A	LTC2246HLX	14	25
-B	LTC2226HLX	12	25

## APPROVALS

	INIT	DATE
DRAWN		
CHECK		
DESIGN	KIM T.	02-04-08
ENGR	CLARENCE M.	02-04-08

**LINEAR TECHNOLOGY**  
 1630 MCCARTHY BLVD  
 MILPITAS, CA 95035  
 PH: (408)432-1900  
 LTC CONFIDENTIAL-  
 FOR CUSTOMER USE ONLY

TITLE: TOP ASSEMBLY DRAWING  
**HIGH TEMP ADC**

SIZE <b>A</b>	DEMO DC1350A-1 * LTC2200 FAMILY	REV. <b>A-1</b>
------------------	------------------------------------	--------------------

SCALE = NONE

SHT 1 of 2