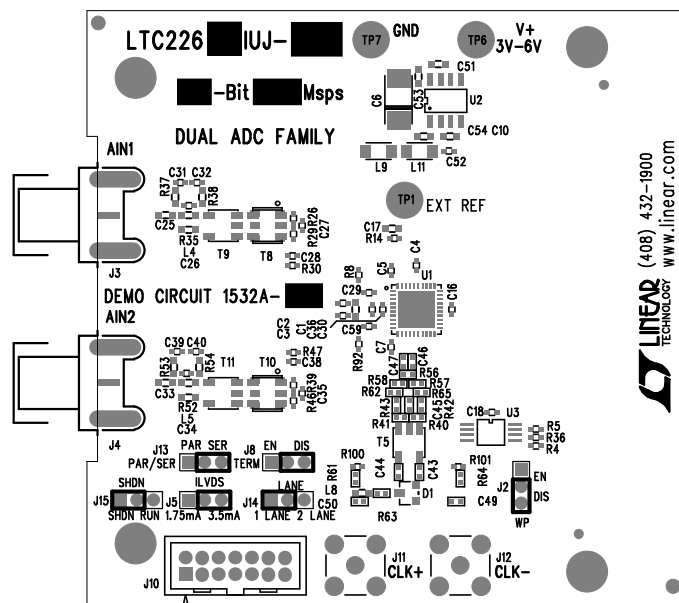


REVISION HISTORY				
ECO	REV	DESCRIPTION	APPR	DATE
	2	PRODUCTION	CLARENCE M.	01-07-10



Silkscreen Top

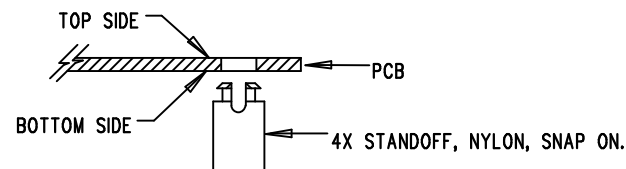
LINEAR TECHNOLOGY
DC1532A-LTC2261IUJ
DUAL ADC FAMILY
DATE: 01-07-2010

7. MARK EACH LTC PART NUMBER AND ASSEMBLY TYPE WITH BLACK PERMANENT MARKER AS SHOWN IN TABLE BELOW:

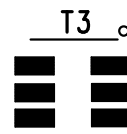
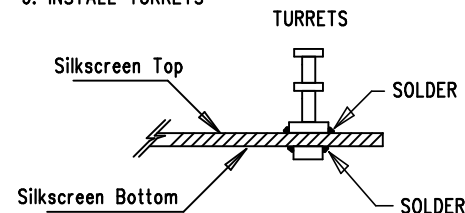
ASSY	U1	BITS	MspS
-A	LTC2268IUJ-14	14	125
-B	LTC2267IUJ-14	14	105
-C	LTC2266IUJ-14	14	80
-D	LTC2265IUJ-14	14	65
-E	LTC2264IUJ-14	14	40
-F	LTC2263IUJ-14	14	25
-G	LTC2268IUJ-12	12	125
-H	LTC2267IUJ-12	12	105
-I	LTC2266IUJ-12	12	80
-J	LTC2265IUJ-12	12	65
-K	LTC2264IUJ-12	12	40
-L	LTC2263IUJ-12	12	25

NOTES: UNLESS OTHERWISE SPECIFIED

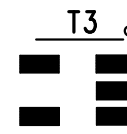
- WORKMANSHIP SHALL BE IN ACCORDANCE WITH IPC-A-610.
- INSTALL SHUNTS AS SHOWN. J2 : DIS, J13 : SER
- DEPANELIZE BOARDS AFTER ASSEMBLY AND ROUTE-OUT THE BREAKOUT TABS ON FOUR SIDES OF THE BOARD EDGE.
- ASSEMBLY PROCESS SHALL INCLUDE: REFLOW SOLDER TOP SIDE SMD.
- INSTALL 4 STANDOFFS AT 4 CORNERS AS SHOWN BELOW:




- INSTALL TURRETS



FOR 6 PIN PARTS



FOR 5 PIN PARTS

APPROVALS		 LINEAR TECHNOLOGY	1630 MCCARTHY BLVD MILPITAS, CA 95035 PH: (408)432-1900 LTC CONFIDENTIAL- FOR CUSTOMER USE ONLY	
PCB DES.	A.K.		TITLE: TOP ASSEMBLY DRAWING DUAL ADC FAMILY	
ENG.	CLARENCE M.			
		SIZE N/A	IC NO. LTC226XIUJ FAMILY DEMO CIRCUIT 1532A	REV. 2
SCALE = NONE		FILENAME: DC1532A		SHT 1 of 2