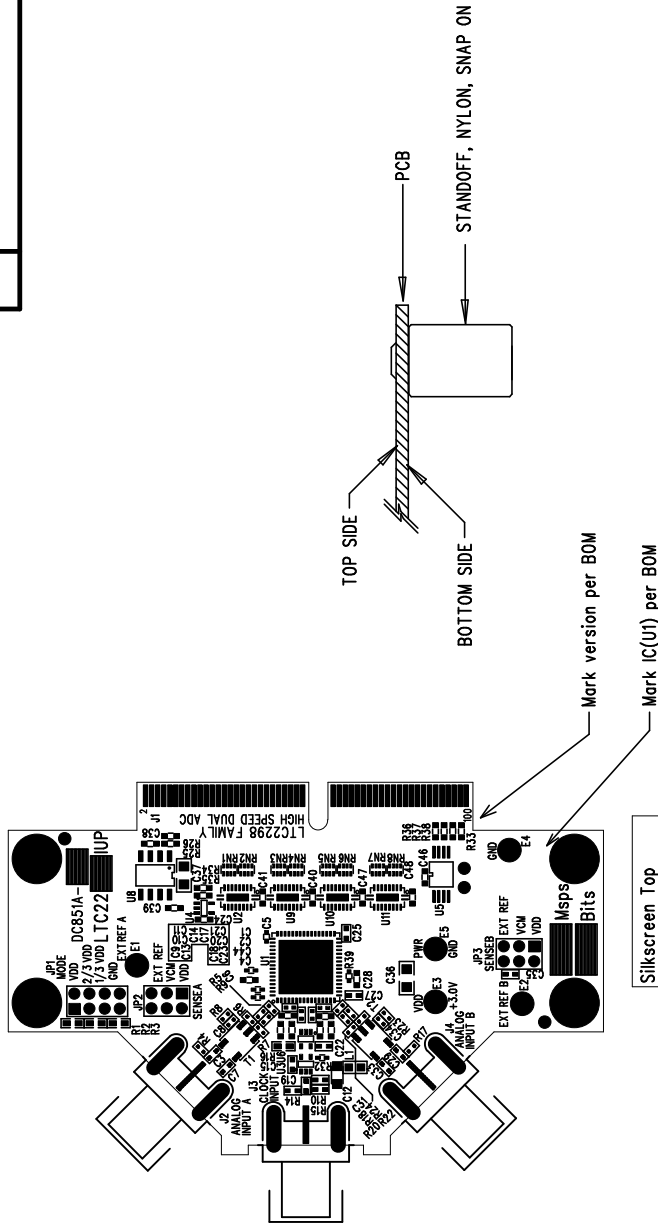



REVISIONS		
REV	DESCRIPTION	DATE



### NOTES : Unless Otherwise Specified

1. BREAK BOARDS FROM THE PANEL WHEN ASSEMBLY IS COMPLETE.
2. OPTIONAL COMPONENTS ARE UNSTUFFED AND SHOULD BE FREE OF SOLDER AFTER ASSEMBLY.
3. JUMPER INSTALLATIONS:

JP1: VDD JP2: VDD  
JP3: VDD

APPROVALS			 <b>LINEAR</b> TECHNOLOGY		1630 McCarthy Blvd. Milpitas, CA 95035 Ph: (408)432-1900			
	INIT	DATE						
DRAWN								
CHECK								
DESIGN	JUNE WU	11/10/04						
ENGR	MARK THOREN	11/10/04	TITLE: LTC2298 FAMILY HIGH SPEED DUAL ADC					
			SIZE	A	DEMO	DC851A	REV.	A
SCALE = NONE			DES-250			SHT 1 of 1		