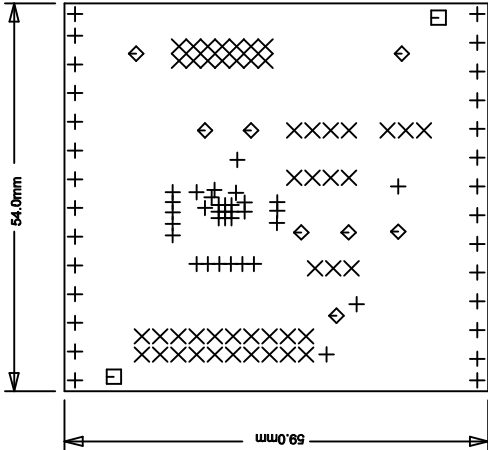
		DWG NO		DC1337A		SH	1	REV	1
REVISION HISTORY									
ECO	REV	DESCRIPTION				DATE		APPROVED	
	1	PROTO				09/26/07			

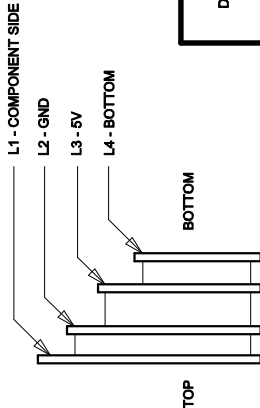
NOTES: UNLESS OTHERWISE SPECIFIED,

- ARTWORK P/N DC1337A REV 1.
- FAB PER IPC-A-600
- PCB SHALL BE RoHS COMPLIANT.
- MATERIAL:
 - LAMINATE: EPOXY FIBERGLASS, NEMA GRADE FR-4
FLAMMABILITY RATING: 94 V-2 MINIMUM.
 - THICKNESS: 1.6 +/- 0.1 mm
 - CLAD: 2 OZ. (50um) EXTERNAL LAYERS.
1 OZ. (25um) COPPER ON TWO INTERNAL LAYERS.
- FINISH:
 - COATING: SOLDERMASK OVER BARE COPPER,
COLOR, GREEN LPI.
 - PLATING: GOLD IMMERSION BOTH SIDES.
 - SILKSCREEN: COMPONENT SIDE WITH WHITE
NON-CONDUCTIVE INK.
- TOLERANCES:
 - WARPAGE: (0,0075mm) MAX. ALONG THE LONGEST DIAG.
AS PER IPC-TM650 METHOD 2.4.22.
 - ETCHING: +0.03mm, -0.3mm OF MASTER PATTERN.
 - REGISTRATION: 0.075mm MAX.
 - MASK THICKNESS: 0.025mm MIN., 0.075mm MAX.
 - HOLE PLATING: 22um +/- 3um.
- SIZE:
 - CUT TO DIMENSIONS AND TOLERANCES SHOWN.
0.00 ARE PRIMARY DATUMS.
- HOLE DIAMETERS ARE POST-PLATED SIZES.
- DEBURR AND BREAK ALL SHARP EDGES.
- DO NOT ALTER ARTWORK e.g. TO ADD LOGO OR DATE CODE.


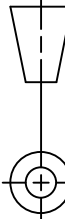


COMPONENT SIDE SHOWN

SIZE	QTY	SYM	PLATED	TOL
0.25	62	+	YES	+/-0.08
0.89	48	X	YES	+/-0.08
1.78	2	□	NO	+/-0.13
1.63	8	◇	YES	+/-0.13



LAYER CONSTRUCTION

UNLESS OTHERWISE SPECIFIED DIMENSIONS ARE IN MILLIMETERS TOLERANCES ON ANGLE $\pm 1^{\circ}$.XX ± 0.25 .XXX ± 0.127	CONTRACT NO.		 1630 McCarthy Blvd. Milpitas, CA 95035 Phone: (408)432-1900 Fax: (408)434-0507				
	APPROVALS		DATE	TITLE FAB, LTC2309CUF, 8-CH LOW NOISE I2C ADC			
	DRAWN	MI	09/26/07				
	CHECKED						
APPROVED							
THIRD ANGLE PROJECTION			SIZE	CAGE CODE	DWG NO.	REV	
			A		DC1337A	1	
DO NOT SCALE DRAWING	DESIGNED BY		SCALE	1/1	FILENAME: 1337A-1.PCB	SHEET	1 OF 1