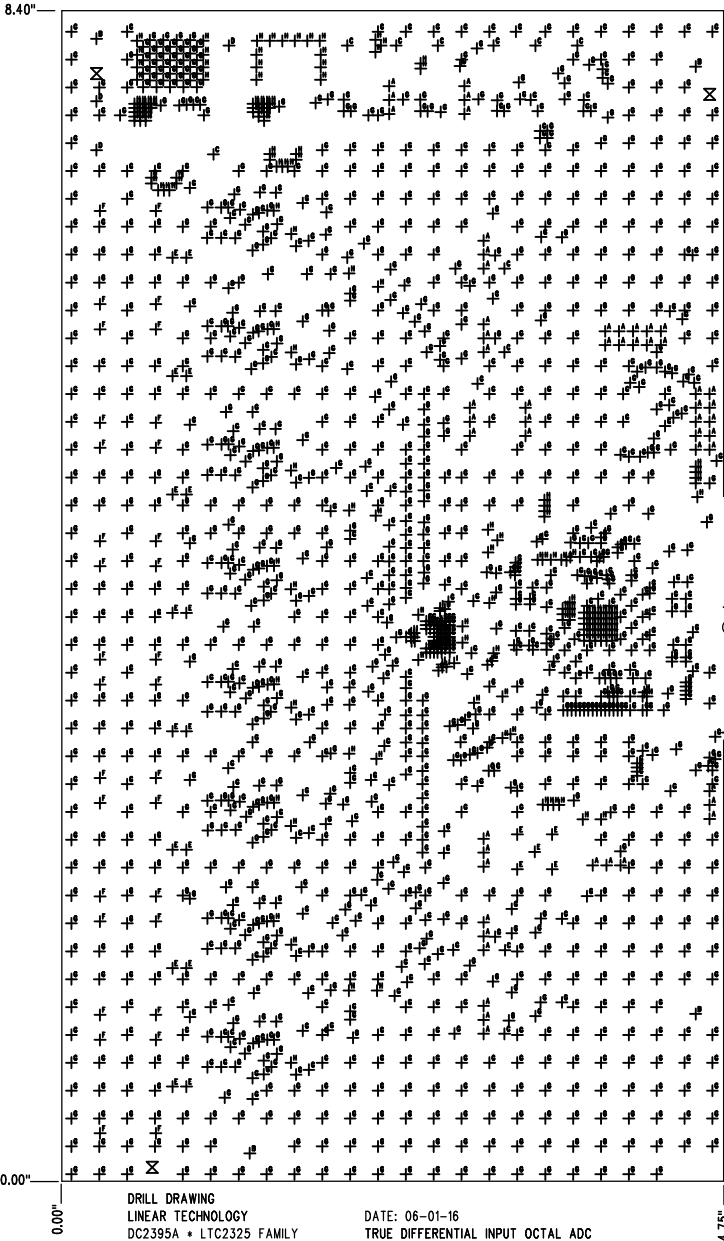
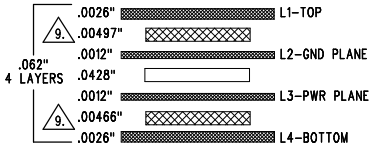


SIZE	QTY	SYM	PLATED	TOL
0.07	3	⊗	NO	+/-0.003
0.035	53	⊕ ^A	YES	+/-0.003
0.19	4	⊕ ^B	NO	+/-0.003
0.063	11	⊕ ^C	YES	+/-0.003
0.094	3	⊕ ^D	YES	+/-0.003
0.055	21	⊕ ^E	YES	+/-0.003
0.12	32	⊕ ^F	YES	+/-0.003
0.012	1355	⊕ ^G	YES	+/-0.003
0.018	175	⊕ ^H	YES	+/-0.003
0.006	12	⊕ ^I	YES	+/-0.003



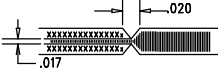
REVISION HISTORY			
ECO	REV	DESCRIPTION	APP. ENG. DATE
-	0	1ST PROTOTYPE	D. STUETZLE 03-13-15

LAYER STRUCTURE





NOTES: UNLESS OTHERWISE SPECIFIED

- FAB PER IPC-A-600.
- MATERIAL: -LEAD FREE ASSEMBLY COMPLIANT, ISOLA FR-370HR OR EQUIVALENT.
-FINISHED THICKNESS TO BE 0.062" +/- .005"
-TOTAL OF 4 LAYERS WITH 2 OZ. CU ON THE OUTER LAYERS AND 1 OZ. CU ON THE INNER LAYERS.
-FLAMMABILITY RATING: 94 V-0 MINIMUM.
- SIZE: CUT TO DIMENSIONS AND TOLERANCES SHOWN.
0.00" ARE PRIMARY DATUMS.
- DRILLING: -DRILL HOLES PER SCHEDULE. PLATE THROUGH HOLES WITH COPPER, 0.001" THICK MIN.
-ALL HOLE SIZES ARE SPECIFIED AFTER PLATING.
-HOLE LOCATION TOLERANCES ARE +/-0.003" IN RELATION TO CENTER
- FINISH: -SMOBC USING LPI BOTH SIDES, COLOR GREEN.
-GOLD IMMERSION BOTH SIDES.
-FOR SILKSCREENS: USE WHITE NON-CONDUCTIVE INK.
- DO NOT ALTER ARTWORK e.g. TO ADD LOGO OR DATE CODE.
PAD SIZE CAN BE MODIFIED TO MEET END FINISH.
- PCBS ARE TO BE RoHS COMPLIANT.
- SCORING FOR PANELIZED PCB (PRODUCTION FAB ONLY):



⚠ SUBJECT TO CHANGE BY MANUFACTURER, DEPENDING ON DIELECTRIC CONSTANT DEVIATIONS. PLEASE CONSULT LTC.

- FINGER AREA: GOLD PLATE TO MIN. OF 0.00003 INCHES.
PER MIL-G-45204, TYP II, CL1, GRADE C, OVER 0.0002 INCHES
LOW STRESS NICKEL PER QQ-N-290, CL2.

UNLESS OTHERWISE SPECIFIED DIMENSIONS ARE IN INCHES TOLERANCES: 0.XX" = ±0.01" 0.XXX" = ±0.005" INTERPRET DIM AND TOL PER ASME Y14.5M-1994 THIRD ANGLE PROJECTION 	APPROVALS		 LINEAR TECHNOLOGY 1630 MCCARTHY BLVD MILPITAS, CA 95035 PH: (408) 432-9000 www.linear.com LTC CONFIDENTIAL - FOR CUSTOMER USE ONLY		
	PCB DES.	D. STUETZLE	TITLE: FABRICATION DRAWING		
	APP ENG.	D. STUETZLE			
			TRUE DIFFERENTIAL INPUT OCTAL ADC		
			SIZE N/A	IC NO. LTC2320 FAMILY DEMO CIRCUIT 2395A	REV 1
SCALE = NONE		FILENAME: DC2395A.PCB		SHT 1 OF 1	