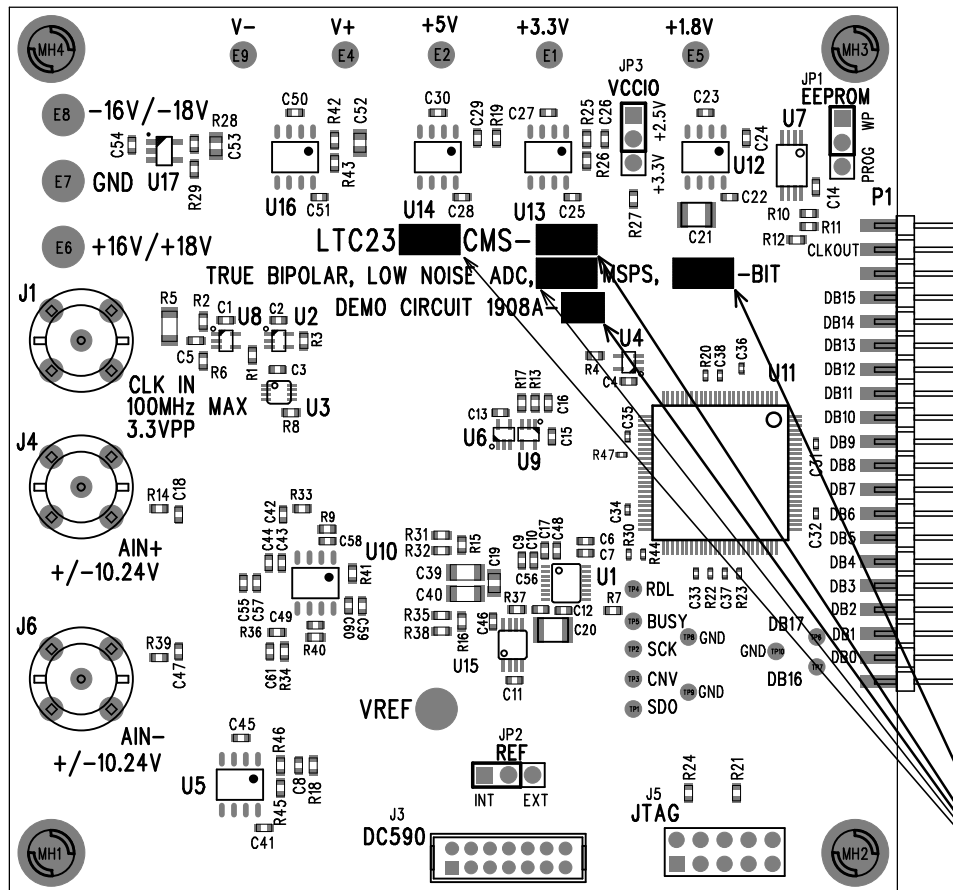
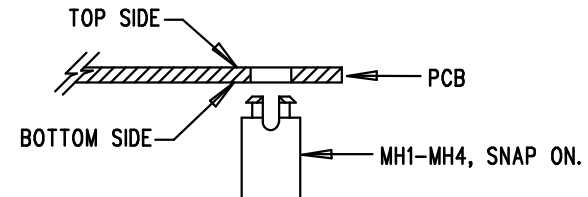


REVISION HISTORY				
ECO	REV	DESCRIPTION	APP. ENG.	DATE
-	2	PRODUCTION	G.HOOVER	08-10-12

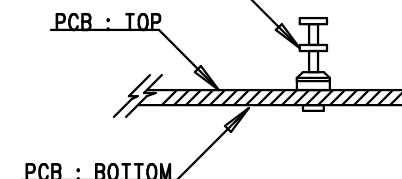


## NOTES: UNLESS OTHERWISE SPECIFIED

1. WORKMANSHIP SHALL BE IN ACCORDANCE WITH IPC-A-610.
2. ASSEMBLY PROCESS SHALL INCLUDE: REFLOW SOLDER TOP SIDE SMD. MAXIMUM SOLDER TEMPERATURE IS 240 DEGREES CELSIUS.
3. OMITTED (OPTIONAL) PARTS ARE SPECIFIED ON THE BILL OF MATERIALS. LAND PATTERNS FOR THESE PARTS SHALL BE FREE OF SOLDER. MASK THE SOLDER STENCIL AT THESE LOCATIONS.
4. INSTALL SHUNTS AS SHOWN ON ASSY DRAWING.
5. DEPANELIZE BOARDS AFTER ASSEMBLY AND ROUTE-OUT THE BREAKOUT TABS ON ALL BOARD EDGES.
6. DO NOT APPLY ANY KIND OF ASSEMBLY STAMP OR QA STAMP TO ANY BOARD.
7. INSTALL 4 STANDOFFS AT 4 LOCATIONS AS SHOWN BELOW:




8. INSTALL TURRETS, E1-E9, AS SHOWN:  
TURRETS : TYPICAL, MILL-MAX 2308-2, 2501-2



9. MARK EACH LTC PART NUMBER, PART TYPE AND ASSEMBLY TYPE WITH BLACK PERMANENT MARKER AS SHOWN IN TABLE BELOW:

ASSY	U1	MSPS	BIT
-A	LTC2338CMS-18	1	18
-B	LTC2337CMS-18	0.5	18
-C	LTC2336CMS-18	0.25	18
-D	LTC2328CMS-18	1	18
-E	LTC2327CMS-18	0.5	18
-F	LTC2326CMS-18	0.25	18
-G	LTC2328CMS-16	1	16
-H	LTC2327CMS-16	0.5	16
-I	LTC2326CMS-16	0.25	16

APPROVALS		 <div> 1630 MCCARTHY BLVD  MILPITAS, CA 95035  PH: (408)432-1900  www.linear.com  LTC CONFIDENTIAL-  FOR CUSTOMER USE ONLY </div>		
PCB DES.	M.HAWKINS			
APP ENG.	G.HOOVER	TITLE: TOP ASSEMBLY DRAWING		
		TRUE BIPOLAR, LOW NOISE ADC		
		SIZE N/A	IC NO. LTC23XXCMS FAMILY DEMO CIRCUIT 1908A	REV. 2
SCALE = NONE		FILENAME: DC1908A-2.PCB		SHT 1 OF 2