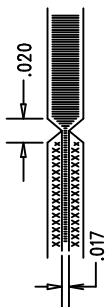


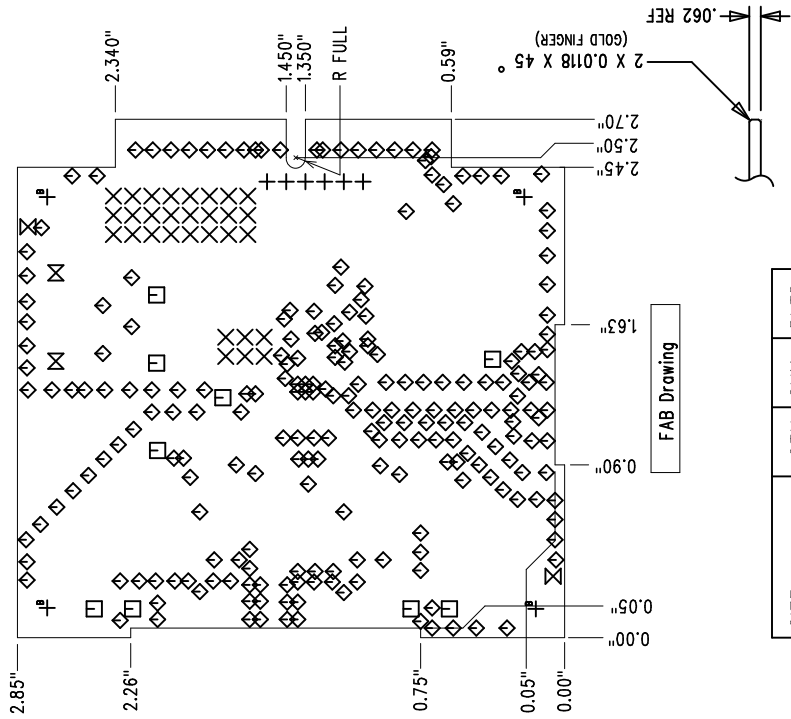
LAYER STRUCTURE

NOTES: UNLESS OTHERWISE SPECIFIED

- 1. FAB PER IPC-A-600
- 2. MATERIAL: EPOXY FIBERGLASS, NEMA GRADE FR-4
FINISHED THICKNESS TO BE 0.062" +/- 0.006"
TOTAL OF 4 LAYERS WITH 2 OZ. COPPER ON THE OUTER LAYERS AND 1 OZ. COPPER ON THE INTERNAL LAYERS.
FLAMABILITY RATING: 94 V-0 MINIMUM .
- 3. FINISH: SMOBC USING LPI BOTH SIDES, COLOR GREEN.
GOLD IMMERSION.
FOR SILKSCREEN: USE WHITE NON-CONDUCTIVE INK.
- 4. DRILLING: DRILL HOLES PER SCHEDULE. ALL PLATED THROUGH HOLES WITH COPPER, 0.001" MIN. / 0.0015" MAX. COPPER PLATE
ALL HOLE SIZES ARE SPECIFIED AFTER PLATING. HOLE LOCATION TOLERANCES ARE +/-0.01" IN RELATION TO CENTER
- 5. DO NOT ALTER ARTWORK e.g. TO ADD LOGO OR DATE CODE.
- 6. SUBJECT TO CHANGE BY MANUFACTURER, DEPENDING ON DIELECTRIC CONSTANT DEVIATIONS. PLEASE CONSULT LTC.
- 7. FINGER AREA: GOLD PLATE TO MIN. OF 0.00003 INCHES.
PER MIL-G-45204, TYP II, CL1, GRADE C, OVER 0.0002 INCHES LOW STRESS NICKEL PER QQ-N-290, CL2.
- 8. SCORING FOR PANELIZED PCB:



FAB DRAWING



FAB Drawing

SIZE	QTY	SYM	PLTD
35	6	+	PLTD
40	30	X	PLTD
65	9	□	PLTD
10	230	◇	PLTD
70	2	⊗	NPLTD
95	2	⊗	PLTD
187	4	B	NPLTD

APPROVALS

DRAWN	INIT	DATE
CHECK		
DESIGN	JUNE WU	4/18/06
ENGR	GUY HOOVER	4/18/06

1630 MCCATHY BLVD
MILPITAS, CA 95035
PH: (408)432-1900
LTC CONFIDENTIAL -
FOR CUSTOMER USE ONLY

LINEAR
TECHNOLOGY

TITLE:
LTC1407 FAMILY
HIGH SPEED ADC

SIZE	DC1082A	REV.	A
DES-			

SCALE = NONE

SHT 1 of 1