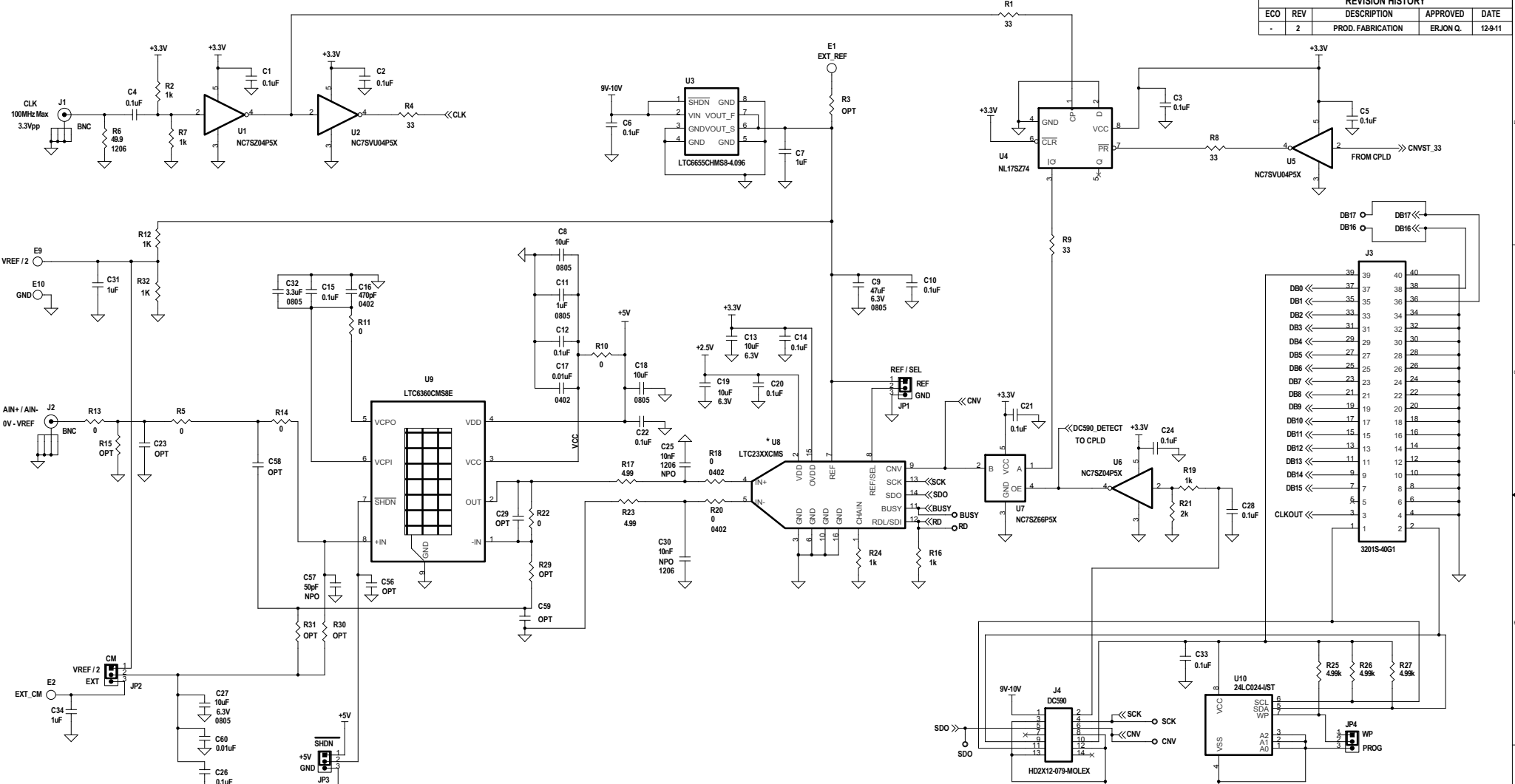


REVISION HISTORY				
ECO	REV	DESCRIPTION	APPROVED	DATE
-	2	PROD. FABRICATION	ERJON Q.	12-9-11



* ASSY

ASSY	U8	BITS	MSPS
-A	LTC2370CMS-16	16	2.0
-B	LTC2368CMS-16	16	1.0
-C	LTC2367CMS-16	16	0.5
-D	LTC2364CMS-16	16	0.25
-E	LTC2369CMS-18	18	1.6
-F	LTC2368CMS-18	18	1.0
-G	LTC2367CMS-18	18	0.5
-H	LTC2364CMS-18	18	0.25

NOTE: UNLESS OTHERWISE SPECIFIED
 1. ALL RESISTORS ARE IN OHMS, 0603.
 ALL CAPACITORS ARE IN MICROFARADS, 0603.
 2. INSTALL SHUNTS AS SHOWN.

CUSTOMER NOTICE
 LINEAR TECHNOLOGY HAS MADE A BEST EFFORT TO DESIGN A CIRCUIT THAT MEETS CUSTOMER-SUPPLIED SPECIFICATIONS. HOWEVER, IT REMAINS THE CUSTOMER'S RESPONSIBILITY TO VERIFY PROPER AND RELIABLE OPERATION IN THE ACTUAL APPLICATION. COMPONENT SUBSTITUTION AND PRINTED CIRCUIT BOARD LAYOUT MAY SIGNIFICANTLY AFFECT CIRCUIT PERFORMANCE OR RELIABILITY. CONTACT LINEAR TECHNOLOGY APPLICATIONS ENGINEERING FOR ASSISTANCE.
 THIS CIRCUIT IS PROPRIETARY TO LINEAR TECHNOLOGY AND SUPPLIED FOR USE WITH LINEAR TECHNOLOGY PARTS.

APPROVALS

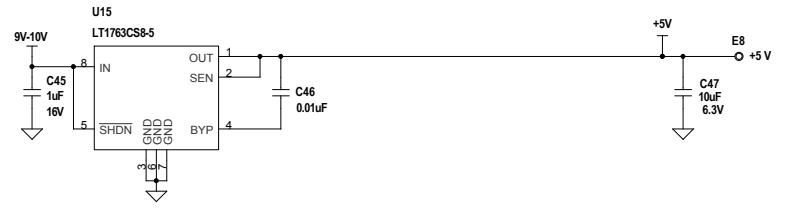
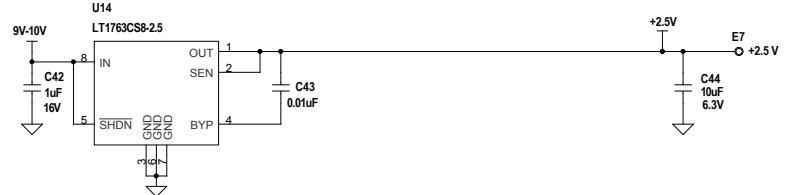
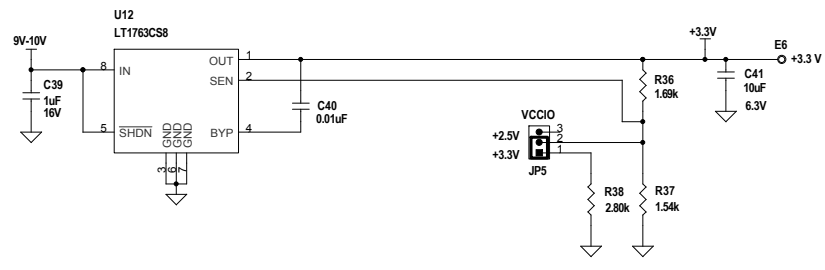
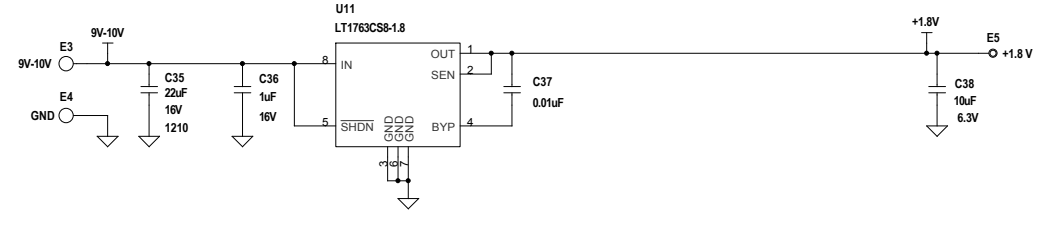
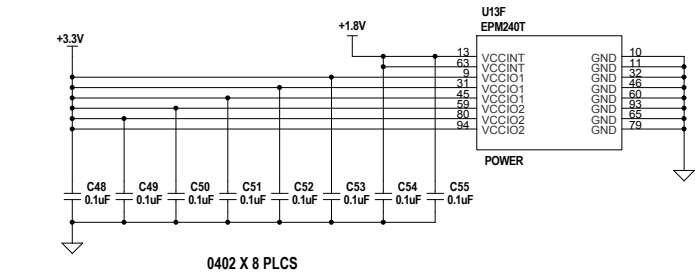
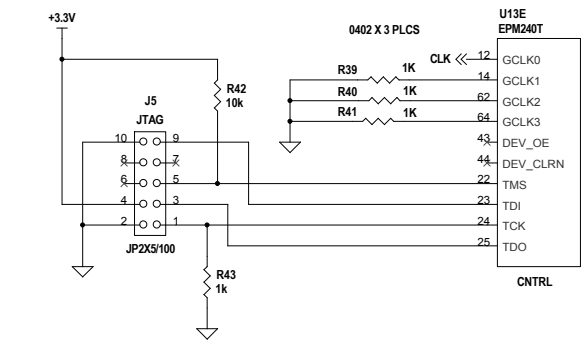
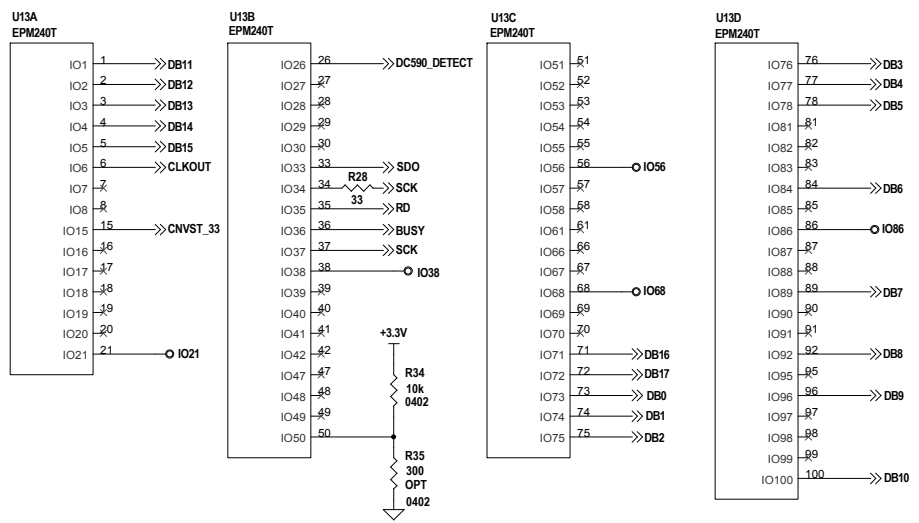
PCB DES:	NC
APP ENG:	ERJON Q.
SCALE:	NONE

LINEAR TECHNOLOGY
 1630 McCarthy Blvd.
 Milpitas, CA 95035
 Phone: (408)532-1900
 Fax: (408)434-0507
 LTC Confidential-For Customer Use Only
www.linear.com

TITLE: SCHEMATIC
LTC6360 DRIVING 18-BIT SAR ADC

SIZE:	N/A	IC NO.:	LTC6360CMS8E	REV.:	2
DATE:	12-9-11		DEMO CIRCUIT 1796A - A / H		

SHEET 1 OF 2



CUSTOMER NOTICE		APPROVALS		LINEAR TECHNOLOGY	
LINEAR TECHNOLOGY HAS MADE A BEST EFFORT TO DESIGN A CIRCUIT THAT MEETS CUSTOMER-SUPPLIED SPECIFICATIONS; HOWEVER, IT REMAINS THE CUSTOMER'S RESPONSIBILITY TO VERIFY PROPER AND RELIABLE OPERATION IN THE ACTUAL APPLICATION. COMPONENT SUBSTITUTION AND PRINTED CIRCUIT BOARD LAYOUT MAY SIGNIFICANTLY AFFECT CIRCUIT PERFORMANCE OR RELIABILITY. CONTACT LINEAR TECHNOLOGY APPLICATIONS ENGINEERING FOR ASSISTANCE.		PCB DES.	NC	TITLE: SCHEMATIC	
THIS CIRCUIT IS PROPRIETARY TO LINEAR TECHNOLOGY AND SUPPLIED FOR USE WITH LINEAR TECHNOLOGY PARTS.		APP ENG.	ERJON Q.	LTC6360 DRIVING 18 - BIT SAR ADC	
		SCALE = NONE		SIZE N/A	IC NO. LTC6360CMS8E
				DEMO CIRCUIT 1796A - A / H	
				DATE: 12-9-11	REV. 2
				SHEET 2 OF 2	

1630 McCarthy Blvd.
Milpitas, CA 95035
Phone: (408)432-1900 www.linear.com
Fax: (408)434-0507
LTC Confidential-For Customer Use Only