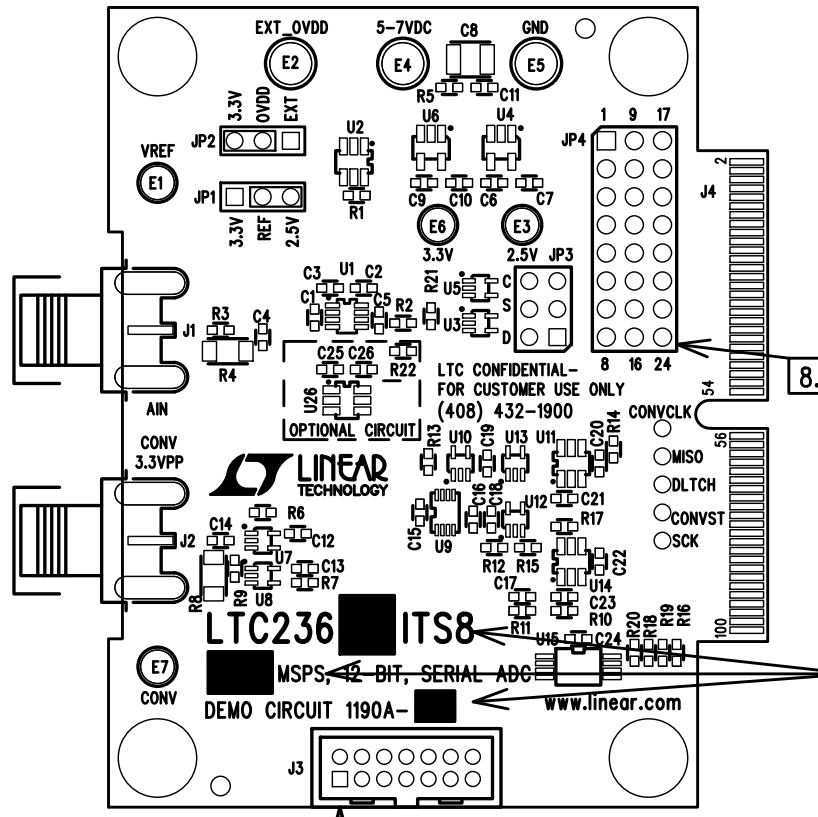
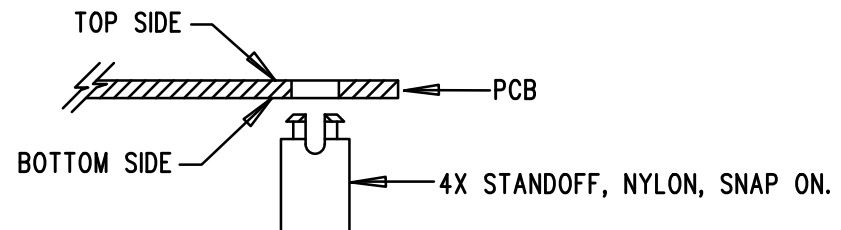


REVISION HISTORY			
REV	DESCRIPTION	APPR	DATE
2	PRODUCTION	GUY H.	12-12-11



**NOTES: UNLESS OTHERWISE SPECIFIED**

1. WORKMANSHIP SHALL BE IN ACCORDANCE WITH IPC-A-610.
2. INSTALL SHUNT ON JP1-JP2 PINS 2&3.
3. DEPANELIZE BOARDS AFTER ASSEMBLY AND ROUTE-OUT THE BREAKOUT TABS ON FOUR SIDES OF THE BOARD EDGE.
4. ASSEMBLY PROCESS SHALL INCLUDE: REFLOW SOLDER TOP SIDE SMD.
5. INSTALL 4 STANDOFFS AT 4 CORNERS AS SHOWN BELOW:



7. MARK LTC DEMO CIRCUIT ASSY DASH LETTER AND THE IC PART NUMBER (SEE TABLE) WITH BLACK PERMANENT MARKER, APPROX. WHERE SHOWN. (SEE BELOW EXAMPLE).

EXAMPLE: DC1190A- A ↗ MARKED

8. INSTALL SHUNT ON JP4 FOR EACH ASSEMBLY VERSION AS SHOWN IN TABLE.

ASSY	U1	Msp/s	JP4 SHUNT
–A	LTC2366ITS8	3	8–16
–B	LTC2365ITS8	1	8–16
–C	LTC2362ITS8	0.5	16–24
–D	LTC2361ITS8	0.25	16–24
–E	LTC2360ITS8	0.1	16–24

## APPROVALS

	NAME	DATE
DRAWN		
CHECK		
DESIGN	KIM T.	12-12-11
ENGR	GUY H.	12-12-11



**LINEAR  
TECHNOLOGY**

1630 MCCARTHY BLVD  
MILPITAS, CA 95035  
PH: (408)432-1900  
LTC CONFIDENTIAL -  
FOR CUSTOMER USE ONLY

**TITLE: TOP ASSEMBLY DRAWING**

**\* MSPS, 12-BIT, SERIAL ADC**

SIZE A	DEMO LTC2360 FAMILY DEMO CIRCUIT 1190A	REV. 2
-----------	---	--------

SCALE = NONE

FILE NAME: DC1190A-2.PCB

SHT 1 of 1