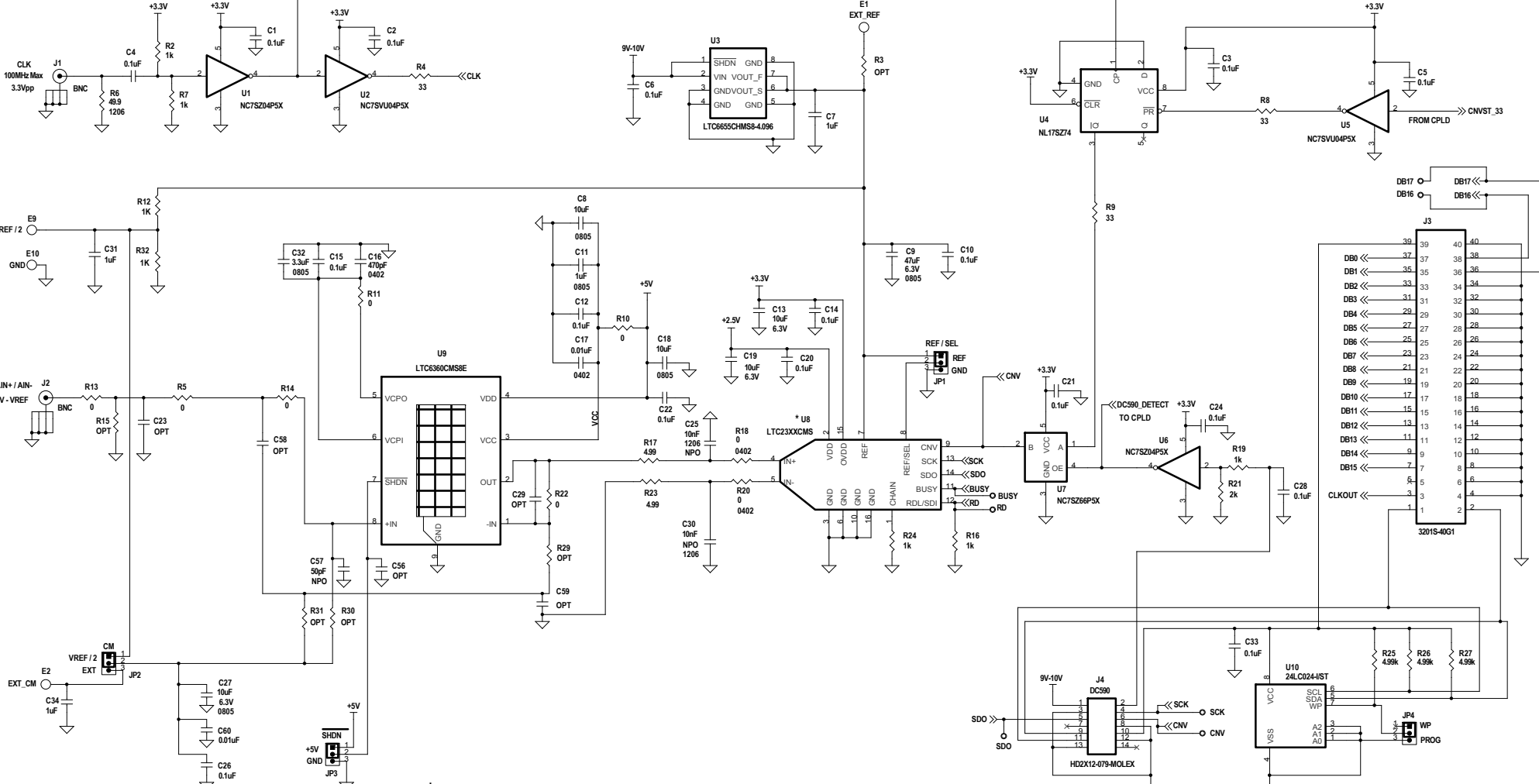


REVISION HISTORY				
ECO	REV	DESCRIPTION	APPROVED	DATE
-	2	PROD. FABRICATION	ERJON Q.	12-9-11



ASSY	U8	BITS	Msps
-A	LTC2370CMS-16	16	2.0
-B	LTC2368CMS-16	16	1.0
-C	LTC2367CMS-16	16	0.5
-D	LTC2364CMS-16	16	0.25
-E	LTC2369CMS-18	18	1.6
-F	LTC2368CMS-18	18	1.0
-G	LTC2367CMS-18	18	0.5
-H	LTC2364CMS-18	18	0.25

NOTE: UNLESS OTHERWISE SPECIFIED  
 1. ALL RESISTORS ARE IN OHMS, 0603.  
 ALL CAPACITORS ARE IN MICROFARADS, 0603.

### CUSTOMER NOTICE

LINEAR TECHNOLOGY HAS MADE A BEST EFFORT TO DESIGN A CIRCUIT THAT MEETS CUSTOMER-SUPPLIED SPECIFICATIONS; HOWEVER, IT REMAINS THE CUSTOMER'S RESPONSIBILITY TO VERIFY PROPER AND RELIABLE OPERATION IN THE ACTUAL APPLICATION. COMPONENT SUBSTITUTION AND PRINTED CIRCUIT BOARD LAYOUT MAY SIGNIFICANTLY AFFECT CIRCUIT PERFORMANCE OR RELIABILITY. CONTACT LINEAR TECHNOLOGY APPLICATIONS ENGINEERING FOR ASSISTANCE.

THIS CIRCUIT IS PROPRIETARY TO LINEAR TECHNOLOGY AND SUPPLIED FOR USE WITH LINEAR TECHNOLOGY PARTS.

### APPROVALS

PCB DES.	NC
APP ENG.	ERJON Q.
SCALE	NONE

1630 McCarthy Blvd.  
 Milpitas, CA 95035  
 Phone: (408)321-9000 www.linear.com  
 Fax: (408)434-0507  
 LTC Confidential-For Customer Use Only

TITLE: SCHEMATIC

LTC6360 DRIVING 18 - BIT SAR ADC

SIZE N/A

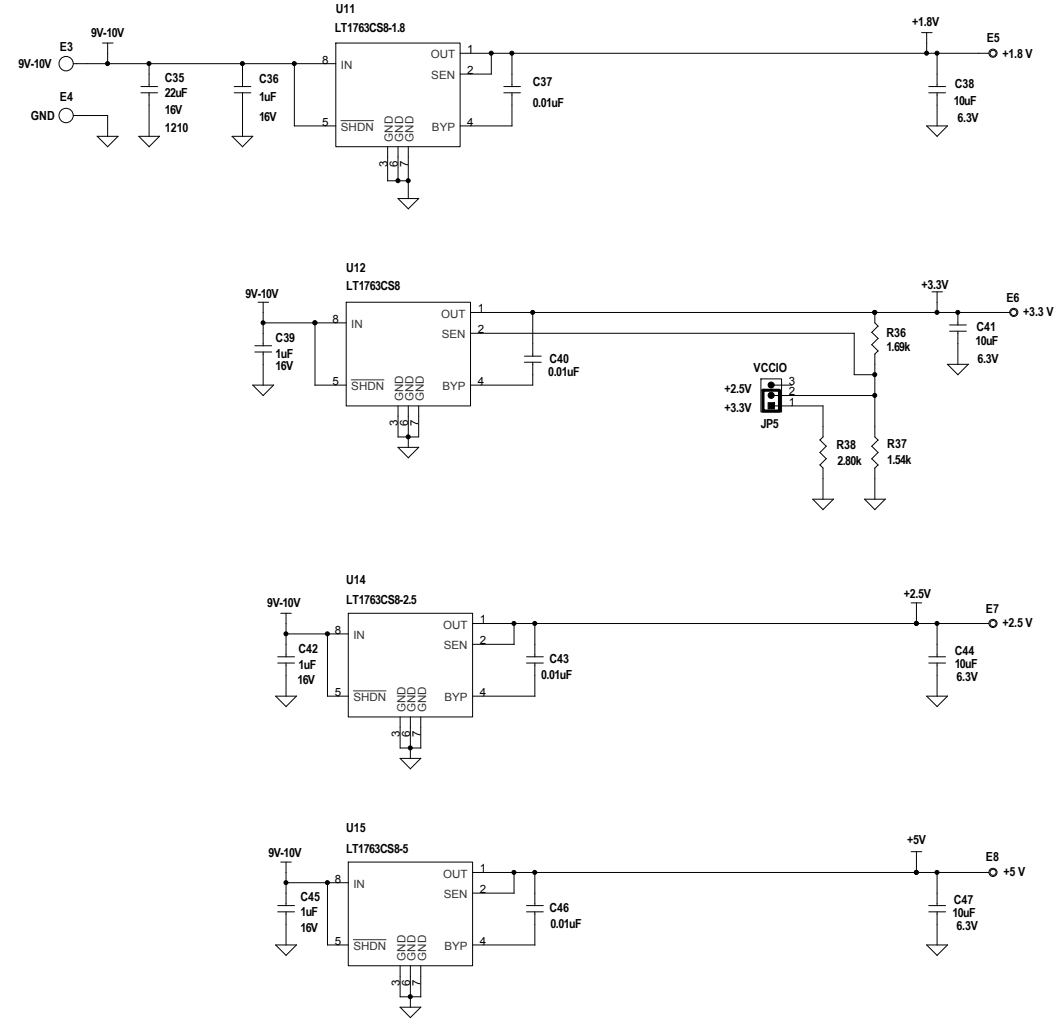
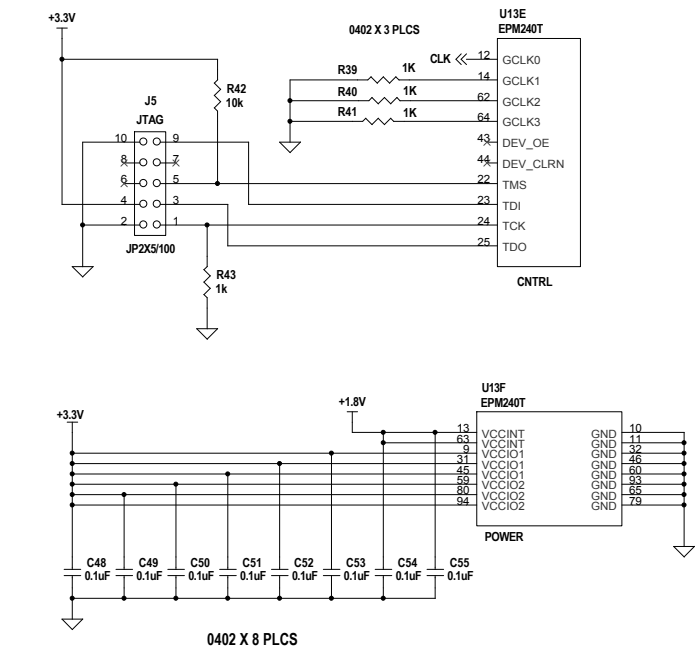
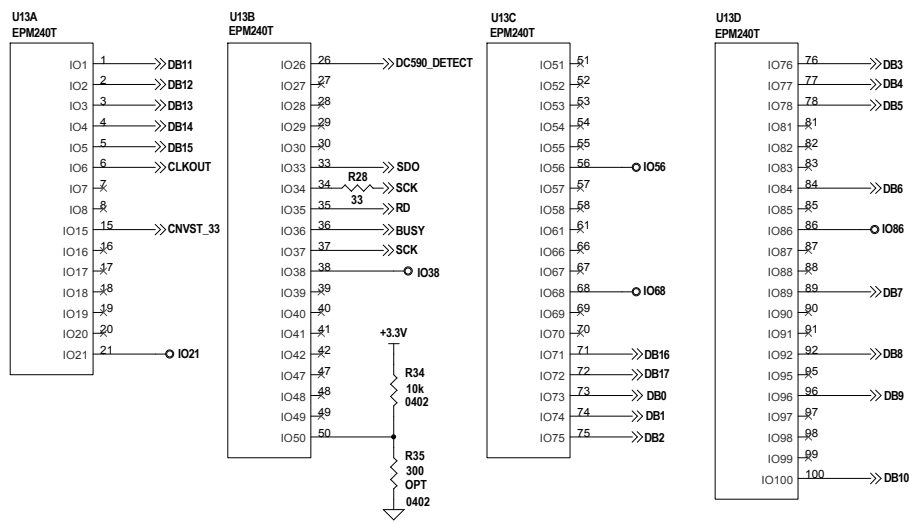
IC NO. LTC6360CMS8E

DEMO CIRCUIT 1796A - A / H

REV. 2

DATE: 12-9-11

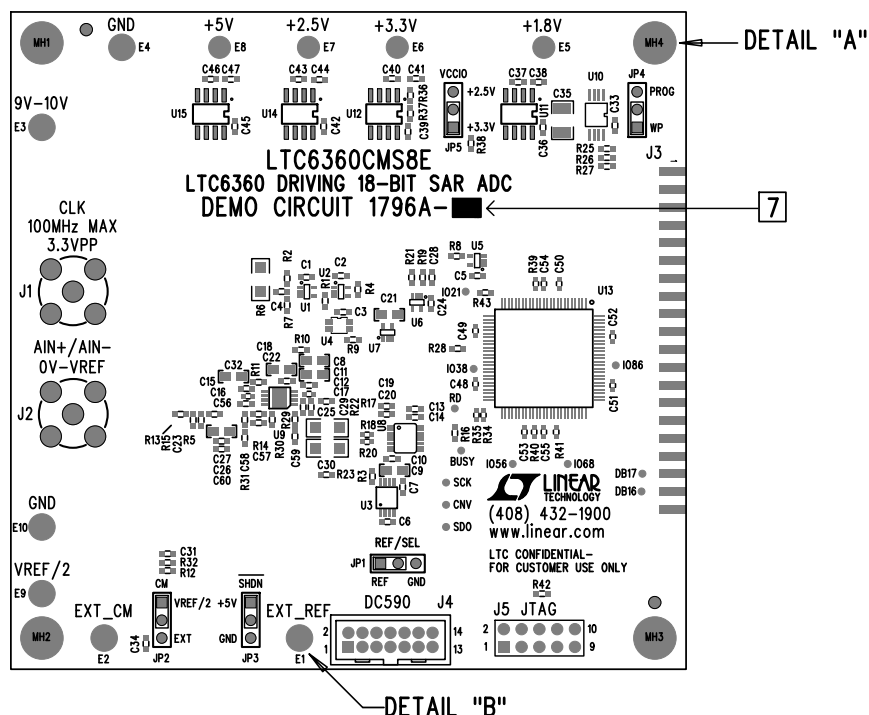
SHEET 1 OF 2



CUSTOMER NOTICE		APPROVALS		TITLE: SCHEMATIC	
LINEAR TECHNOLOGY HAS MADE A BEST EFFORT TO DESIGN A CIRCUIT THAT MEETS CUSTOMER-SUPPLIED SPECIFICATIONS; HOWEVER, IT REMAINS THE CUSTOMER'S RESPONSIBILITY TO VERIFY PROPER AND RELIABLE OPERATION IN THE ACTUAL APPLICATION. COMPONENT SUBSTITUTION AND PRINTED CIRCUIT BOARD LAYOUT MAY SIGNIFICANTLY AFFECT CIRCUIT PERFORMANCE OR RELIABILITY. CONTACT LINEAR TECHNOLOGY APPLICATIONS ENGINEERING FOR ASSISTANCE.		PCB DES.	NC	LTC6360 DRIVING 18 - BIT SAR ADC	
		APP ENG.	ERJON Q.		
THIS CIRCUIT IS PROPRIETARY TO LINEAR TECHNOLOGY AND SUPPLIED FOR USE WITH LINEAR TECHNOLOGY PARTS.		SCALE = NONE		SIZE	IC NO.
				N/A	LTC6360CMS8E
				DATE:	12-9-11
				SHEET 2 OF 2	

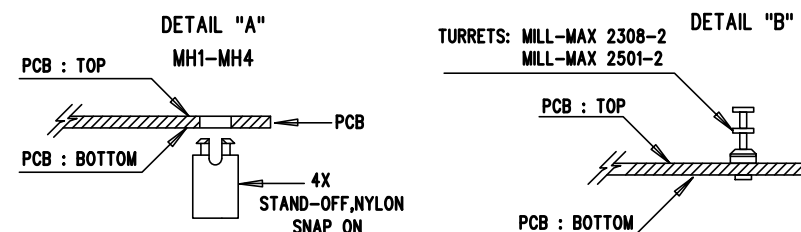
**LINEAR TECHNOLOGY**  
 1630 McCarthy Blvd.  
 Milpitas, CA 95035  
 Phone: (408)432-1900  
 Fax: (408)434-0507  
 www.linear.com  
 LTC Confidential-For Customer Use Only

REVISION HISTORY				
ECO	REV	DESCRIPTION	APPR	DATE
	2	PROD FABRICATION	ERJON Q.	12-9-11



## NOTES: UNLESS OTHERWISE SPECIFIED

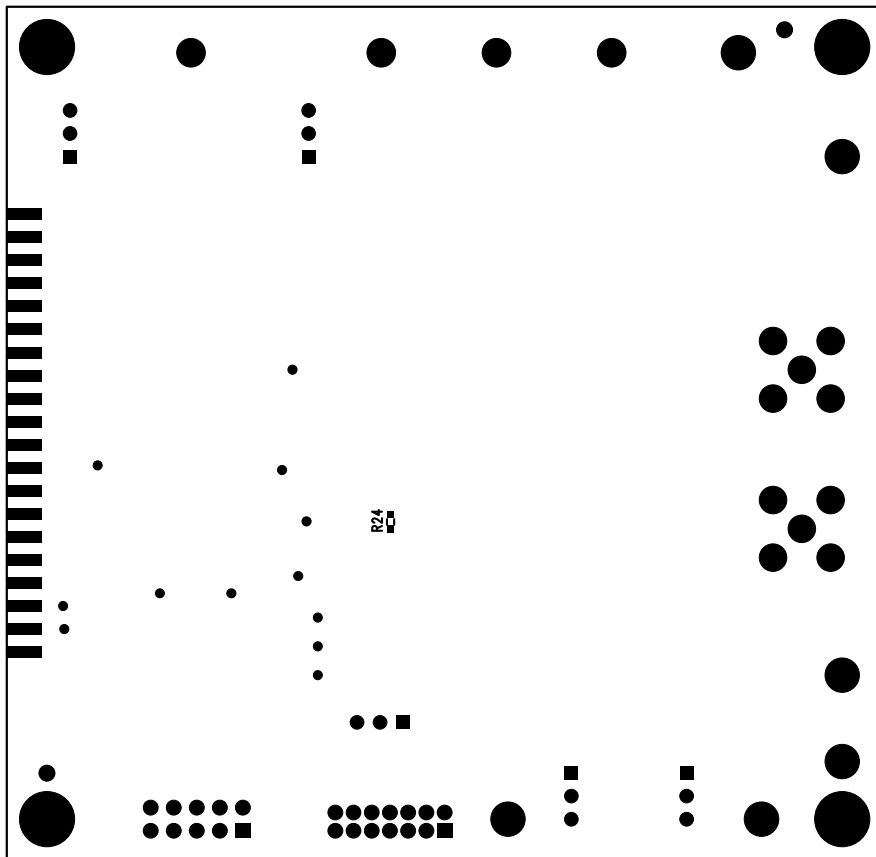
1. WORKMANSHIP SHALL BE IN ACCORDANCE WITH IPC-A-610.
2. ASSEMBLY PROCESS SHALL INCLUDE: REFLOW SOLDER TOP SIDE SMD. MAXIMUM SOLDER TEMPERATURE IS 240 DEGREES CELSIUS.
3. PARTS TO OMIT WILL BE SPECIFIED ON THE BILL OF MATERIALS. LOCATIONS OF OMITTED PARTS SHALL BE FREE OF SOLDER. MASK THE SOLDER STENCIL WHERE SMT PARTS ARE OMITTED.
4. INSTALL SHUNTS AS SHOWN ON ASSY DRAWING.
5. DEPANELIZE BOARDS AFTER ASSEMBLY AND ROUTE-OUT THE BREAKOUT TABS ON FOUR SIDES OF THE BOARD EDGE.
6. INSTALL TURRETS, STAND-OFFS AS SHOWN BELOW:




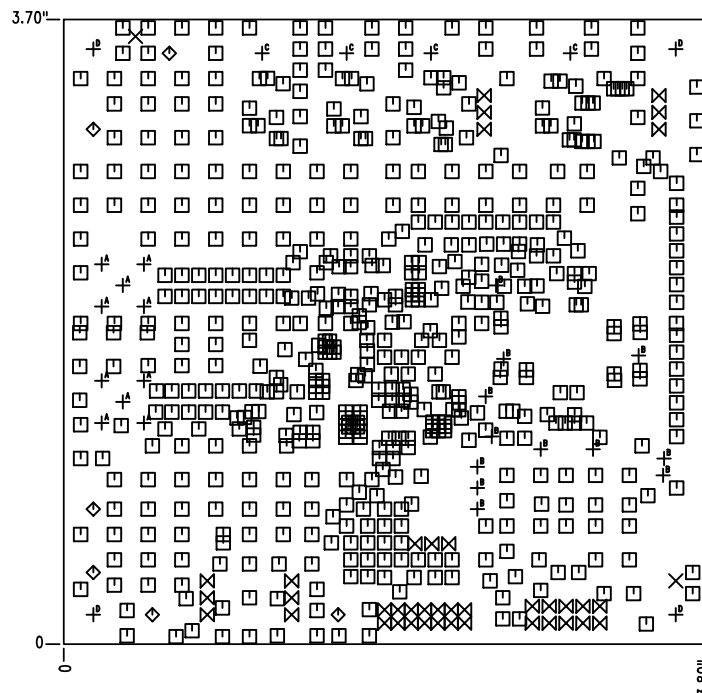
7. MARK EACH ASSEMBLY TYPE WITH BLACK PERMANENT MARKER AS SHOWN IN TABLE BELOW:

ASSY	U8	Bits	Msp/s
-A	LTC2370CMS-16	16	2.0
-B	LTC2368CMS-16	16	1.0
-C	LTC2367CMS-16	16	0.5
-D	LTC2364CMS-16	16	0.25
-E	LTC2369CMS-18	18	1.6
-F	LTC2368CMS-18	18	1.0
-G	LTC2367CMS-18	18	0.5
-H	LTC2364CMS-18	18	0.25

APPROVALS		LINEAR TECHNOLOGY	
PCB DES. NC	APP ENG. ERJON Q.	1630 MCCARTHY BLVD MILPITAS, CA 95035 PH: (408)432-1900 www.linear.com LTC CONFIDENTIAL - FOR CUSTOMER USE ONLY	
		TITLE: TOP ASSEMBLY DRAWING: LTC6360 DRIVING 18-BIT SAR ADC	
SIZE	IC NO.	LTC6360CMS8E	REV.
N/A	DEMO CIRCUIT 1796A-A/H		2
SCALE = NONE		FILENAME: DC1796A-2.PCB	SHT 1 of 2

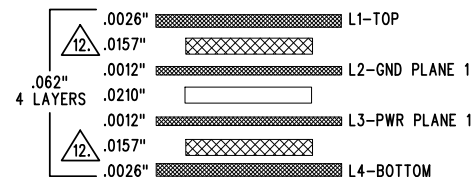


<b>APPROVALS</b> PCB DES. NC APP ENG. ERJON Q.		 <b>LINEAR TECHNOLOGY</b> 1630 MCCARTHY BLVD MILPITAS, CA 95035 PH: (408)432-1900 <a href="http://www.Linear.com">www.Linear.com</a> LTC CONFIDENTIAL - FOR CUSTOMER USE ONLY	
SIZE	IC NO.	LTC6360CMS8E	REV.
N/A		DEMO CIRCUIT 1796A-A/H	2
SCALE = NONE		FILENAME: DC1796A-2.PCB	SHT 2 of 2



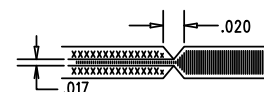
SIZE	QTY	SYM	PLATED	TOL
0.07	2	X	NO	+/-0.003
0.01	578	□	YES	+/-0.003
0.095	6	◇	YES	+/-0.003
0.035	39	⊠	YES	+/-0.003
0.055	10	⊠ <sup>A</sup>	YES	+/-0.003
0.02	12	⊠ <sup>B</sup>	YES	+/-0.003
0.065	4	⊠ <sup>C</sup>	YES	+/-0.003
0.19	4	⊠ <sup>D</sup>	YES	+/-0.003

## LAYER STRUCTURE





## NOTES: UNLESS OTHERWISE SPECIFIED

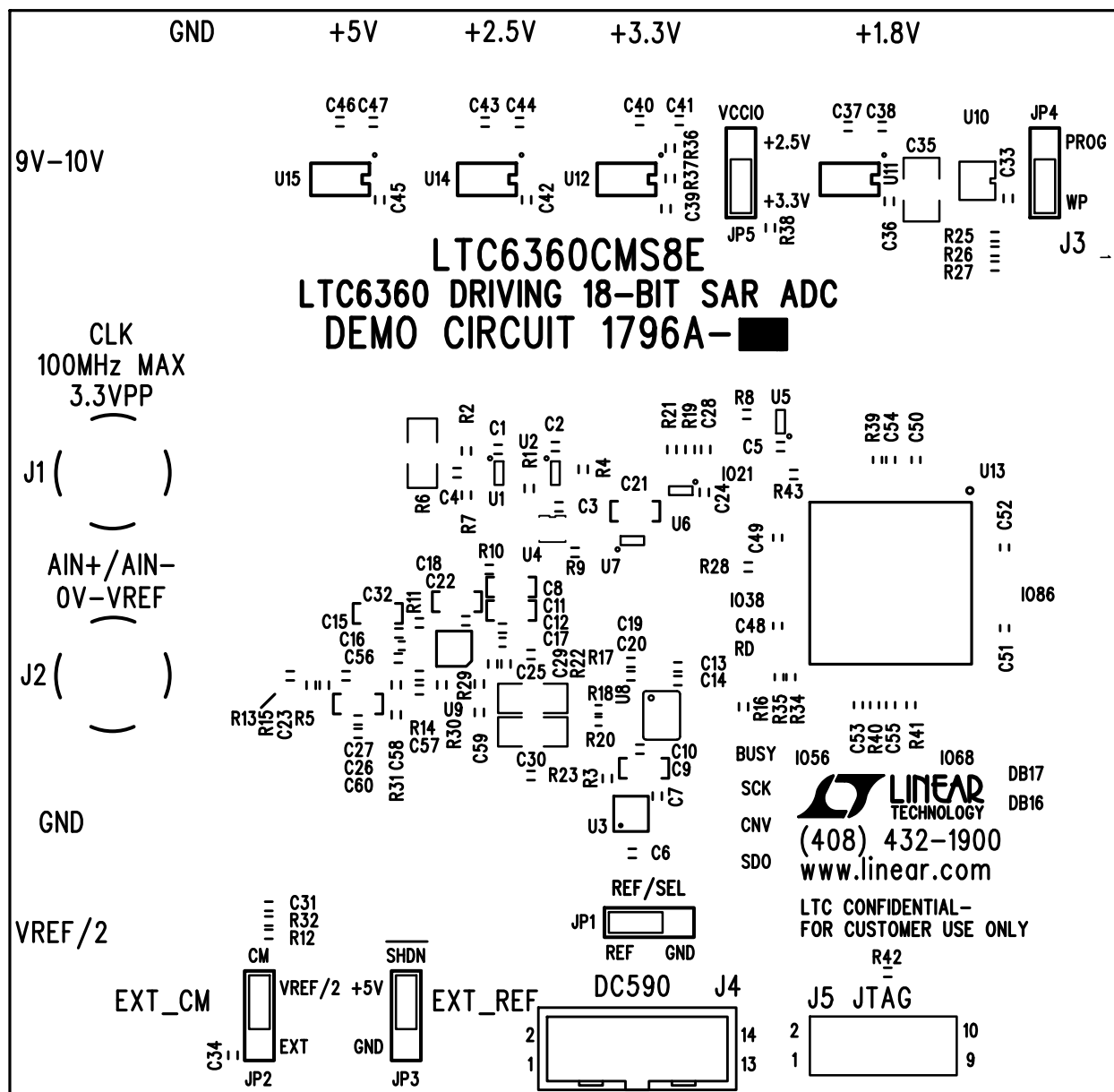
- FAB PER IPC-A-600.
- MATERIAL: -LEAD FREE ASSEMBLY COMPLIANT, ISOLA FR-370HR OR EQUIVALENT.  
-FINISHED THICKNESS TO BE 0.062" +/- .005"  
-TOTAL OF 4 LAYERS WITH 2 OZ. CU CLAD ON THE OUTER LAYERS AND 1 OZ. CU ON THE INNER LAYERS.  
-FLAMMABILITY RATING: 94 V-0 MINIMUM.
- SIZE: CUT TO DIMENSIONS AND TOLERANCES SHOWN.  
0.00" ARE PRIMARY DATUMS.
- DRILLING: -DRILL HOLES PER SCHEDULE. PLATE THROUGH HOLES WITH COPPER, 0.001" THICK MIN.  
-ALL HOLE SIZES ARE SPECIFIED AFTER PLATING.  
-HOLE LOCATION TOLERANCES ARE +/-0.003" IN RELATION TO CENTER
- FINISH: -SMOBC USING LPI BOTH SIDES, COLOR GREEN.  
-FINISH SHALL BE ENIG.  
(LEAD FREE SOLDER CAN BE USED FOR PROTOTYPE)  
-FOR SILKSCREEN: BOTH SIDES USE WHITE NON-CONDUCTIVE INK.
- DO NOT ALTER ARTWORK e.g. TO ADD LOGO OR DATE CODE.  
PAD SIZE CAN BE MODIFIED TO MEET END FINISH.
- PCBS ARE TO BE RoHS COMPLIANT.
- SCORING FOR PANELIZED PCB:



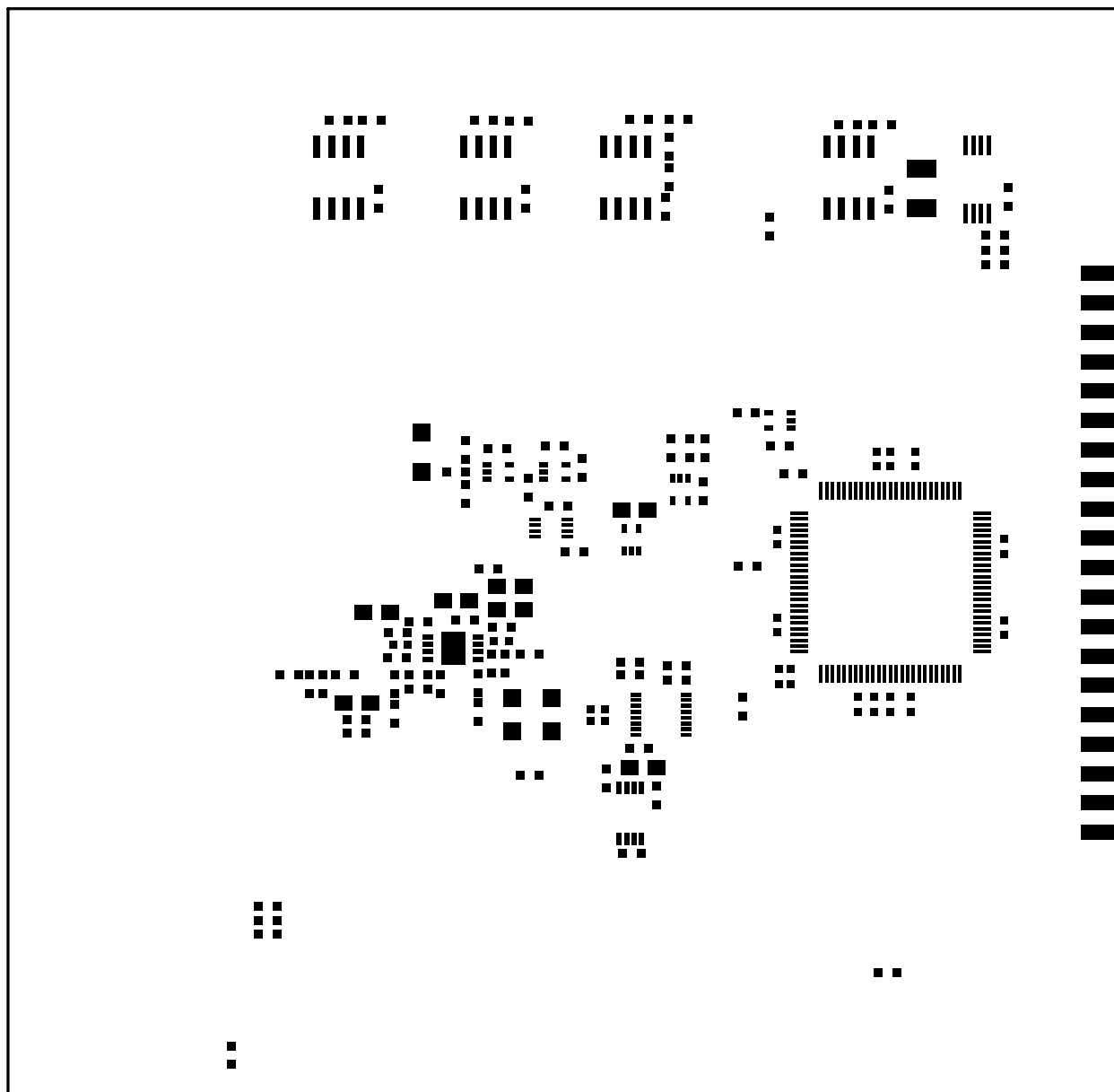
- CONTROLLED 50 OHM IMPEDANCE +/- 5% FOR LAYER 1 TRACE WIDTHS OF 20 MILS.

(10) SUBJECT TO CHANGE BY MANUFACTURER, DEPENDING ON DIELECTRIC CONSTANT DEVIATIONS. PLEASE CONSULT LTC.

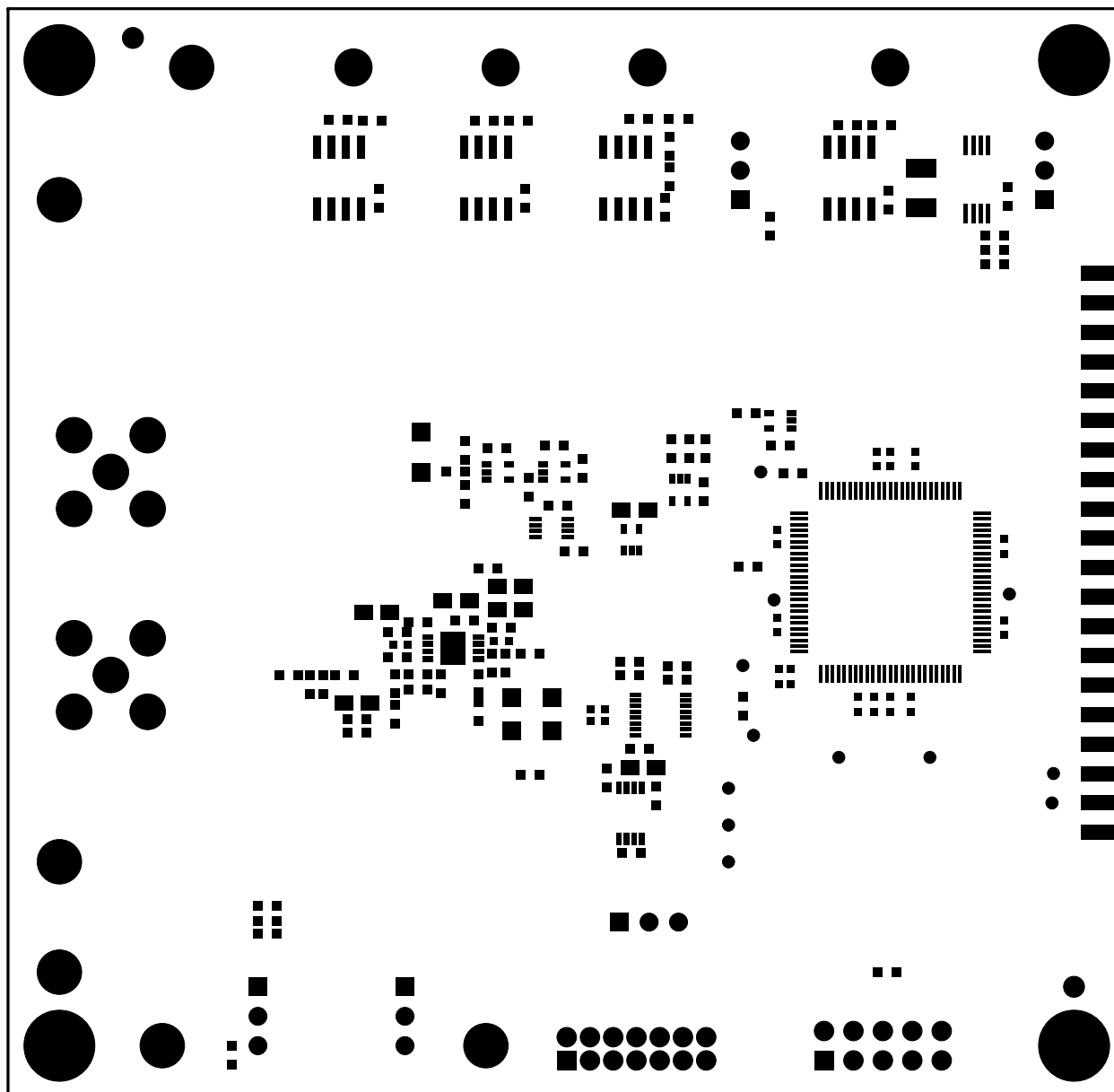
UNLESS OTHERWISE SPECIFIED DIMENSIONS ARE IN INCHES TOLERANCES ON ANGLE ±1 0.XXX" = ±0.001" 0.XXX" = ±0.005" INTERPRET DIM AND TOL PER ASME Y14.5M-1994	APPROVALS		 <b>LINEAR TECHNOLOGY</b>	1630 MCCARTHY BLVD MILPITAS, CA 95035 PH: (408)432-1900 www.linear.com LTC CONFIDENTIAL- FOR CUSTOMER USE ONLY	
	PCB DES. NC				
	APP ENG. ERJON Q.				
THIRD ANGLE PROJECTION			TITLE: FABRICATION DRAWING:		
			LTC6360 DRIVING 18-BIT SAR ADC		
			SIZE N/A	IC NO. LTC6360CMS8E DEMO CIRCUIT 1796A-A/H	REV. 2
DO NOT SCALE DRAWING	SCALE: NONE	FILENAME: DC1796A-2.PCB	SHT 1 of 1		



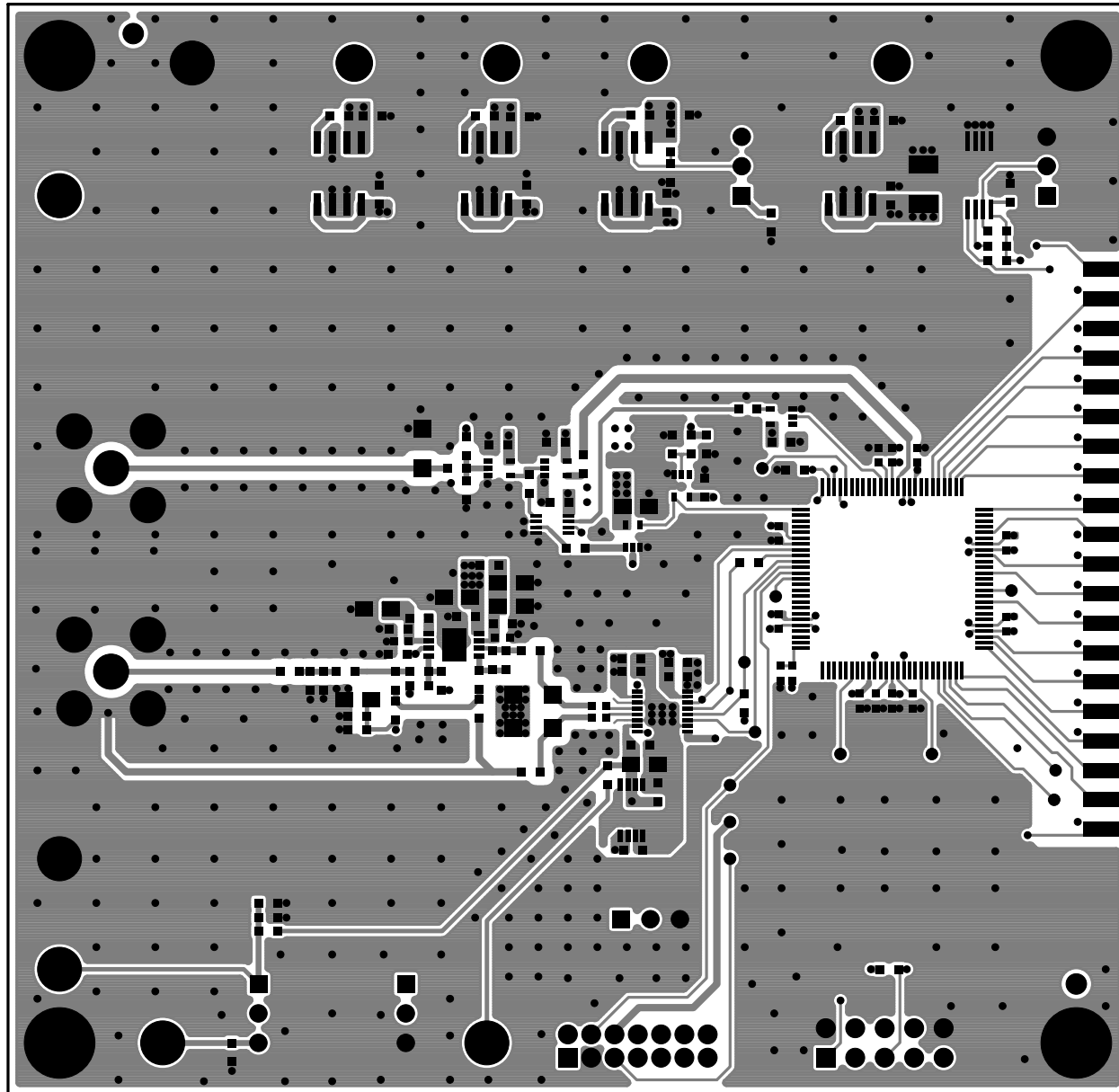
TOP SILKSCREEN  
 LINEAR TECHNOLOGY  
 DC1796A-A/H-2  
 LTC6360CMS8E DRIVING 18-BIT SAR ADC  
 DATE: 12-9-11



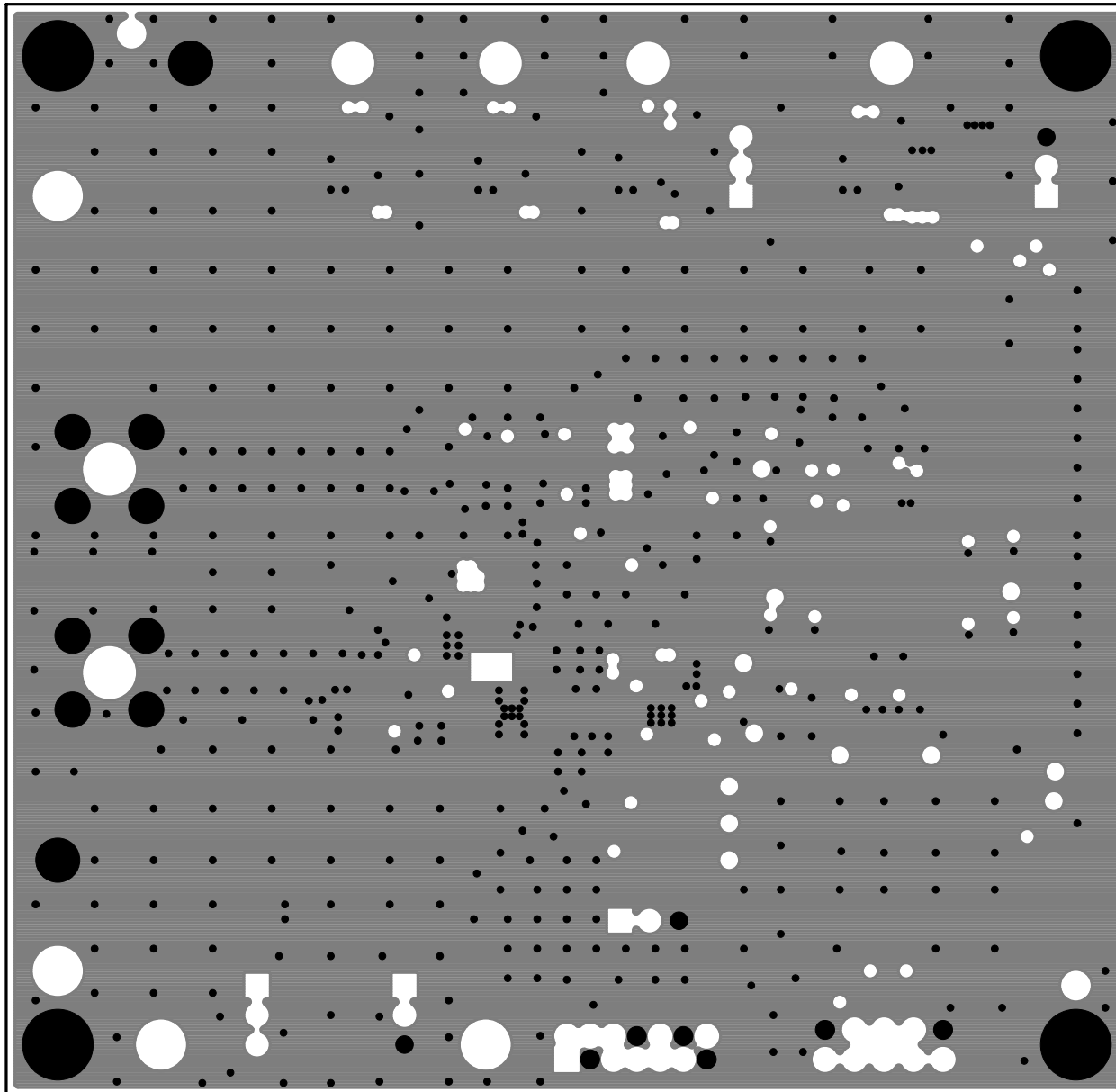
TOP SOLDER PASTE  
LINEAR TECHNOLOGY  
DC1796A-A/H-2  
LTC6360CMS8E DRIVING 18-BIT SAR ADC  
DATE: 12-9-11



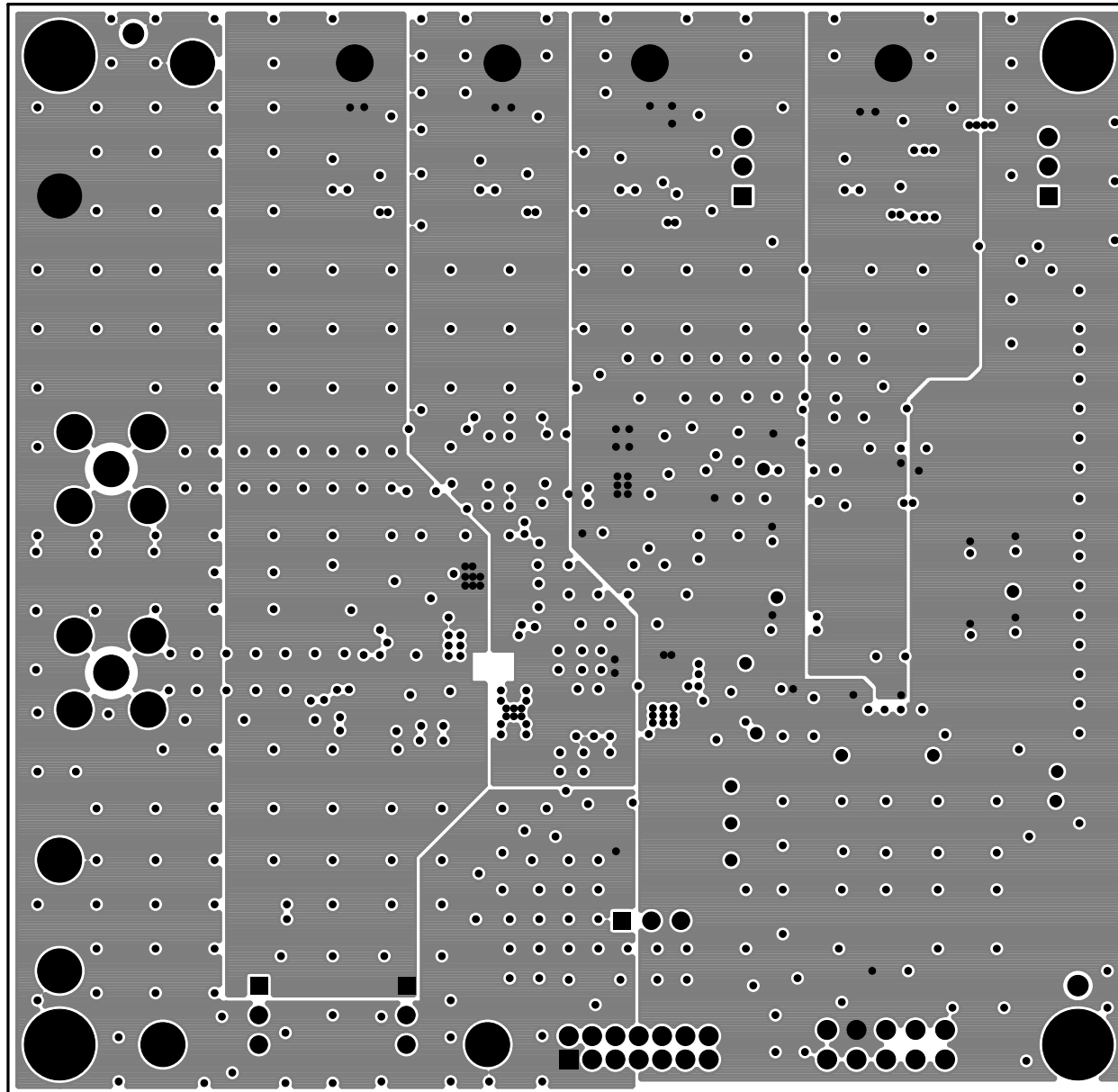
TOP SOLDER MASK  
LINEAR TECHNOLOGY  
DC1796A-A/H-2  
LTC6360CMS8E DRIVING 18-BIT SAR ADC  
DATE: 12-9-11



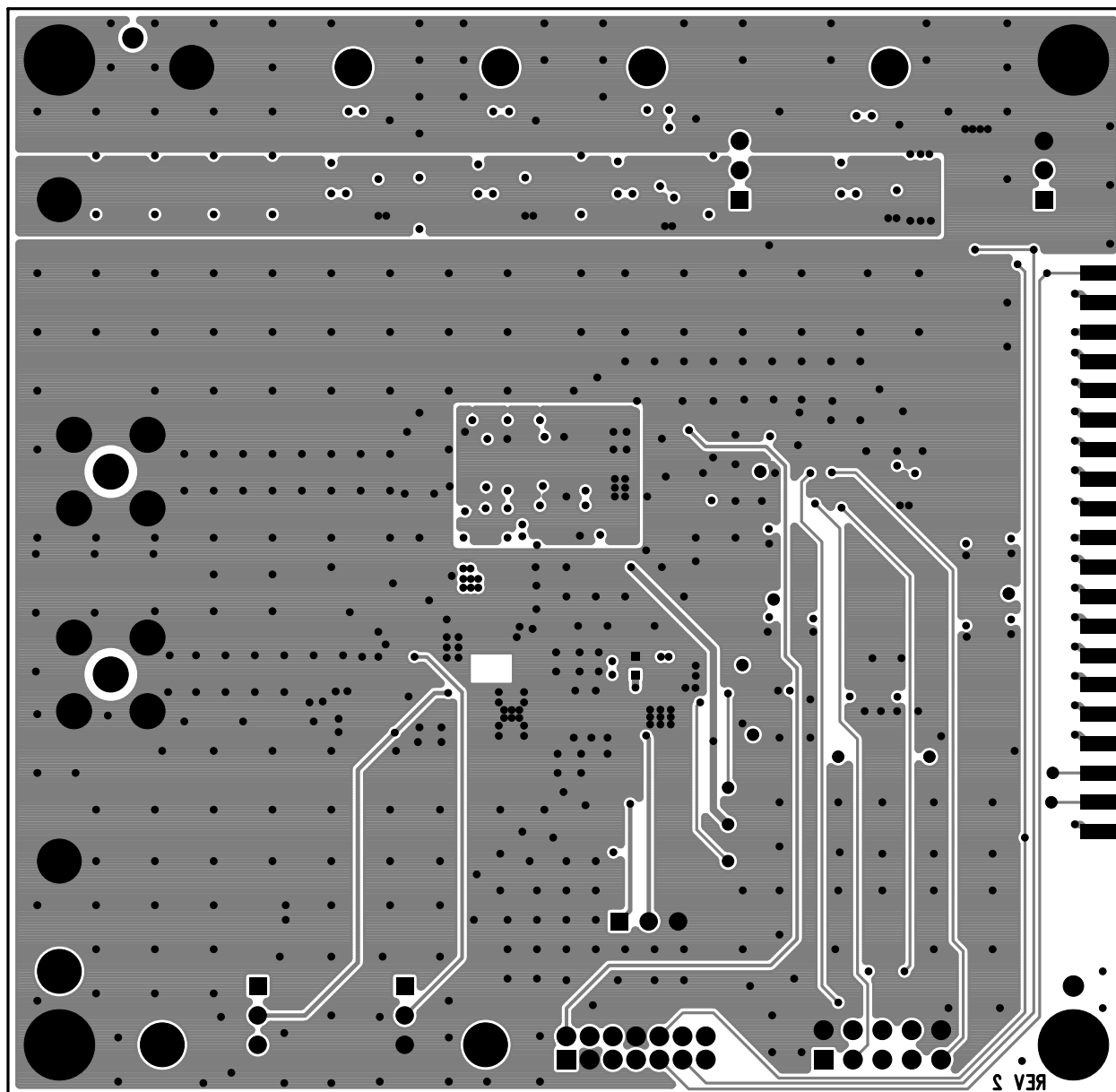
LAYER 1 - TOP LAYER  
LINEAR TECHNOLOGY  
DC1796A-A/H-2  
LTC6360CMS8E DRIVING 18-BIT SAR ADC  
DATE: 12-9-11



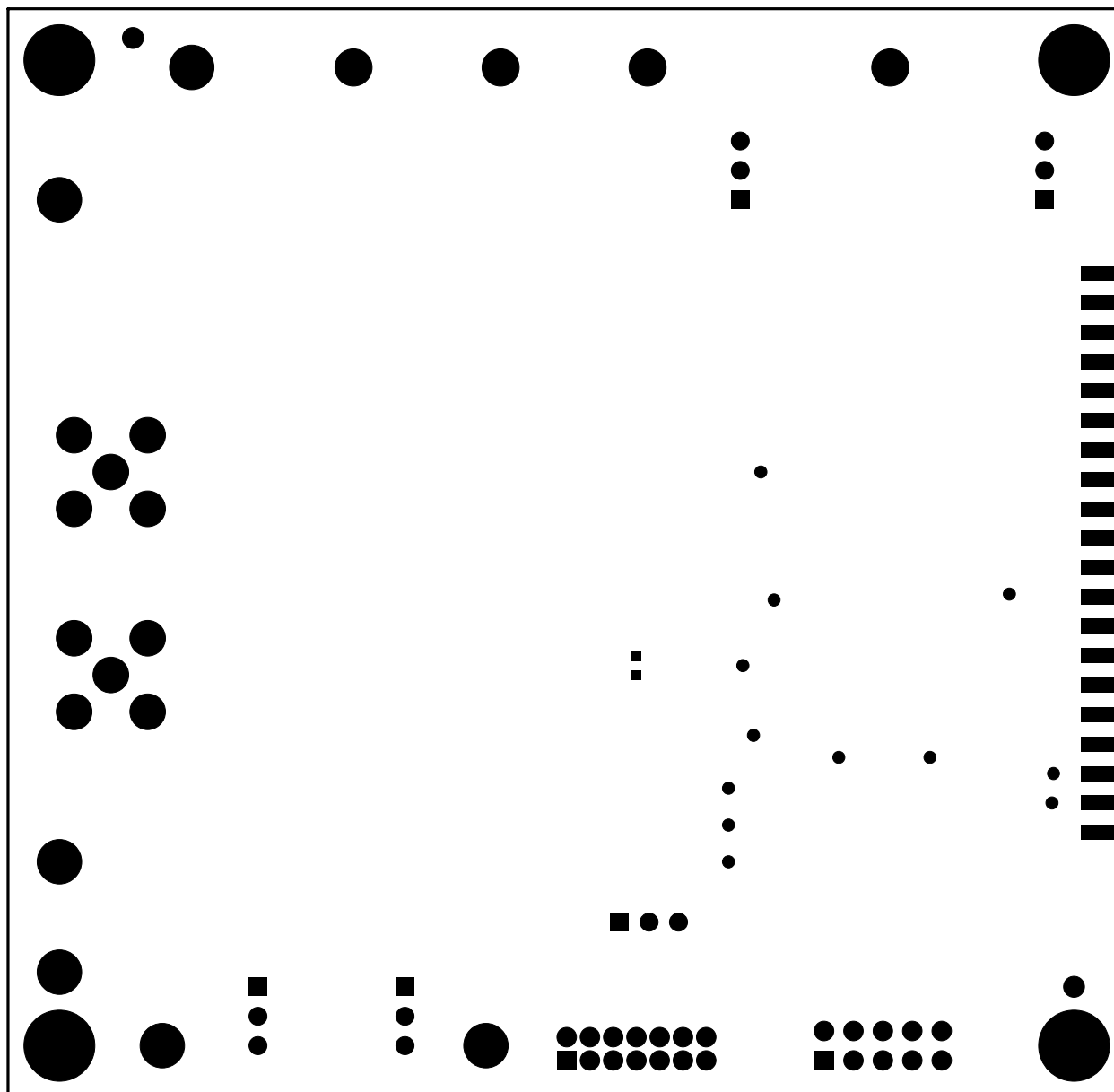
LAYER 2 - GND PLANE 1  
LINEAR TECHNOLOGY  
DC1796A-A/H-2  
LTC6360CMS8E DRIVING 18-BIT SAR ADC  
DATE: 12-9-11



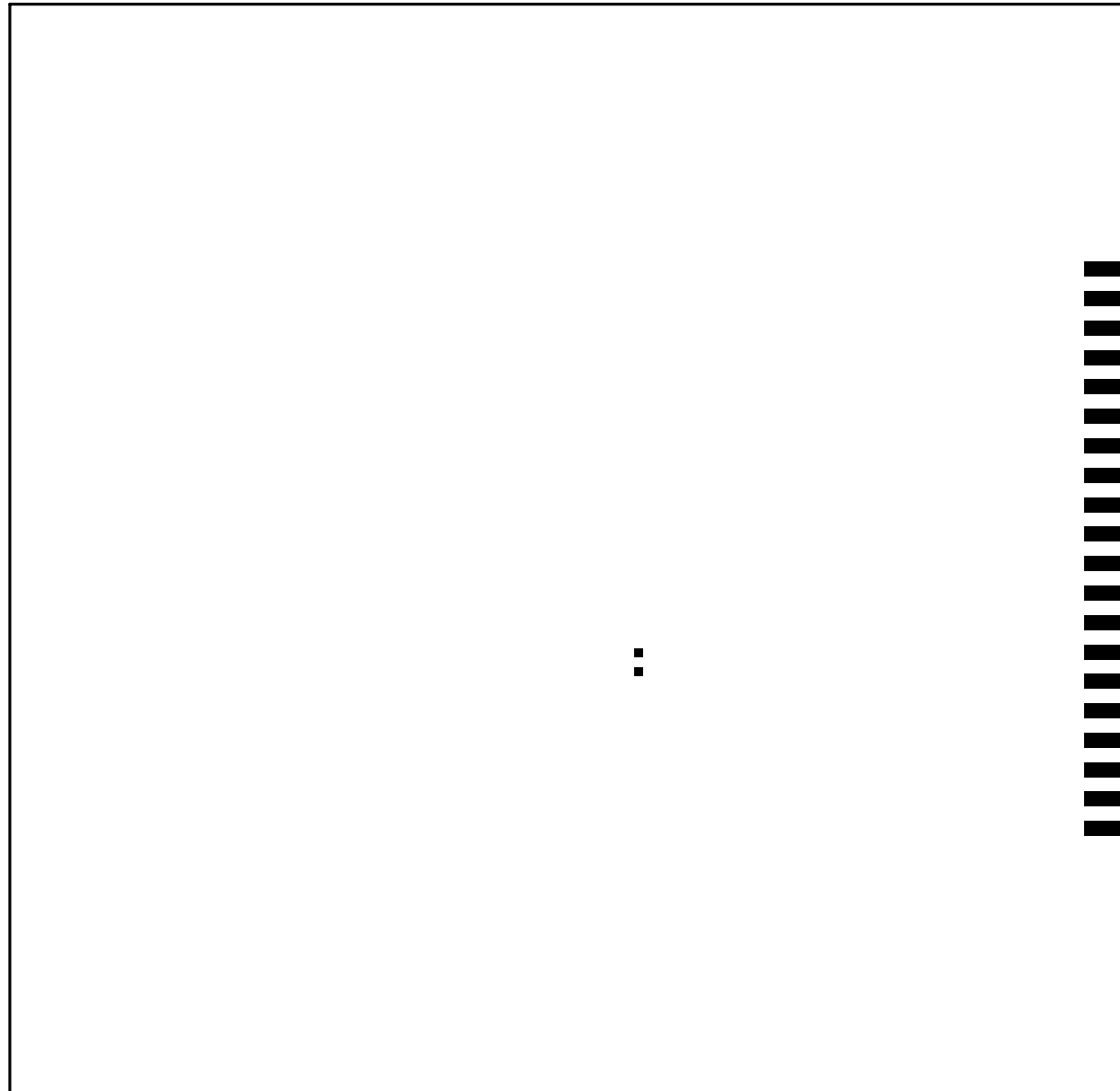
LAYER 3 - POWER PLANE 1  
LINEAR TECHNOLOGY  
DC1796A-A/H-2  
LTC6360CMS8E DRIVING 18-BIT SAR ADC  
DATE: 12-9-11



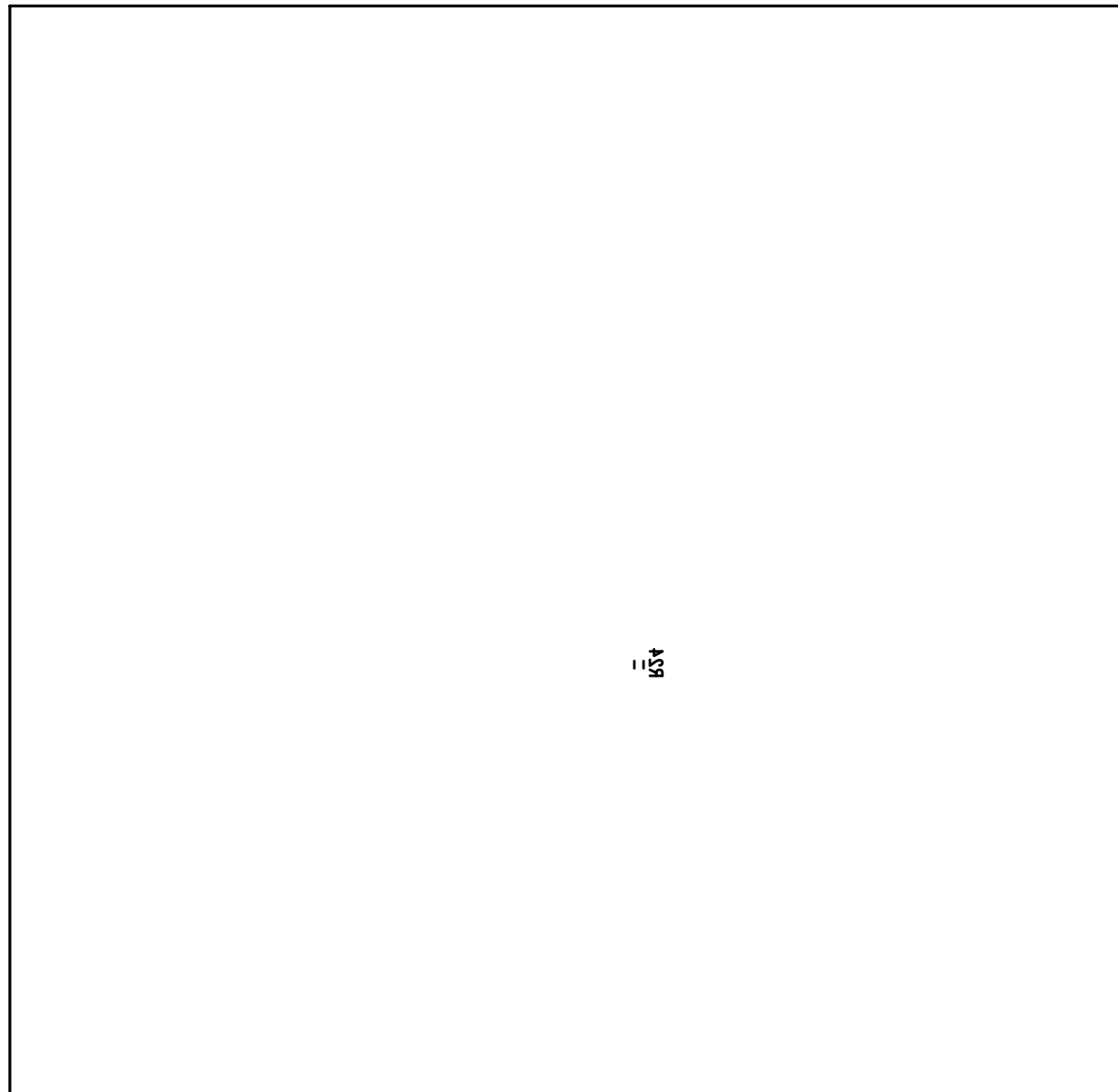
LAYER 4 - BOTTOM LAYER  
LINEAR TECHNOLOGY  
DC1796A-A/H-2  
LTC6360CMS8E DRIVING 18-BIT SAR ADC  
DATE: 12-9-11



BOTTOM SOLDER MASK  
LINEAR TECHNOLOGY  
DC1796A-A/H-2  
LTC6360CMS8E DRIVING 18-BIT SAR ADC  
DATE: 12-9-11



BOTTOM SOLDER PASTE  
LINEAR TECHNOLOGY  
DC1796A-A/H-2  
LTC6360CMS8E DRIVING 18-BIT SAR ADC  
DATE: 12-9-11



159

BOTTOM SILKSCREEN  
LINEAR TECHNOLOGY  
DC1796A-A/H-2  
LTC6360CMS8E DRIVING 18-BIT SAR ADC  
DATE: 12-9-11

# Linear Technology Corporation

ENG: ERJON Q..

LTC6360 DRIVING 18-BIT SAR ADC

**BILL OF MATERIALS**

**DC1796A-2-GENERAL BOM**

**QTY-250**

3/20/2012 10:14 AM

Item	Qty	Reference	Part Description	Manufacturer / Part #	Kit Qty
				<b>NUMBER OF BOARDS =</b>	<b>250</b>
1	17	C1-C6,C10,C12,C14,C15,C20,C21,C22,C24,C26,C28,C33	CAP., X7R, 0.1µF, 25V, 10% 0603	AVX, 06033C104KAT2A	4250
2	7	C7,C31,C34,C36,C39,C42, C45	CAP., X7R, 1µF, 16V, 10% 0603	AVX, 0603YC105KAT2A	1750
3	3	C8,C18,C27	CAP., X5R, 10µF, 10V, 20% 0805	TAIYO YUDEN, LMK212BJ106MG	750
4	1	C9	CAP., X5R, 47µF 6.3V, 20%,0805	TAIYO YUDEN, JMK212BJ476MG-T	250
5	1	C11	CAP., X7R, 1µF, 16V, 10% 0805	TDK, C2012X7R1C105K/0.85	250
6	6	C13,C19,C38,C41,C44,C47	CAP., X5R, 10µF 6.3V, 20%,0603	TDK, C1608X5R0J106MT	1500
7	1	C16	CAP., X7R, 470PF 16V,10% 0402	AVX, 0402YC471KAT4A	250
8	1	C17	CAP., X7R, 0.01µF, 16V,10%,0402	AVX,0402YC103KAT2A	250
9	0	C23,C29,C56,C58,C59 (OPT)	CAP., 0603	OPT	0
10		C57	CAP, NPO, 50PF, 100V 5% ,0603	AVX,06031A500JAT2A	
11	2	C25,C30	CAP., NPO,10000PF, 50V, 1206	PANASONIC, ECJ-3FC1H103J	500
12	1	C32	CAP., X5R, 3.3µF, 16V,10%, 0805	MURATA, GRM21BR61C335KA88L	250
13	1	C35	CAP., X5R, 22µF 16V, 20%, 1210	TAIYO YUDEN, EMK325BJ226MM-T	250
14	5	C37,C40,C43,C46,C60	CAP., X7R, 0.01µF, 16V,10%,0603	AVX, 0603YC103KAT	1250
15	8	C48-C55	CAP., X7R, 0.1µF, 16V,10%, 0402	TDK, C1005X7R1C104KT	2000
16	6	E1,E2,E3,E4,E9,E10	TP, TURRET, 0.094"	MILL-MAX, 2501-2-00-80-00-00-07-0	1500
17	4	E5-E8	TP, TURRET, 0.064"	MILL-MAX, 2308-2-00-80-00-00-07-0	1000
18	2	J1,J2	CONN., BNC-5PINS	CONNEX, 112404	500
19	1	J3	CONN., 40PINS SMT, CON-EDGE40-100	SAMTEC, TSW-120-07-L-D	250
20	1	J4	HEADER, 2X7, 0.079"	MOLEX, 87831-1420	250
21	1	J5	HEADER, 2X5, 0.100", HD2X5-100	SAMTEC, TSW-105-07-L-D	250
22	4	JP2-JP5	JMP., 1X3, 0.100", HD1X3-100	SAMTEC, TSW-103-07-L-S	1000
23	4	XJP2,XJP3,XJP4,XJP5	SHUNT, .100" CENTER	SAMTEC, SNT-100-BK-G	1000
24	1	JP1 (PINS 1-2, REF)	SHUNT, .100" CENTER, FOR PINS 1-2, REF	SAMTEC, JL-100-25-T	250
25	5	R1,R4,R8,R9,R28	RES.,CHIP, 33.0Ω, 0603, 1/10W, 1%	NIC, NRC06F33R0TRF	1250
26	8	R2,R7,R12,R16,R19,R24,R32,R43	RES.,CHIP, 1.00KΩ, 0603, 1/10W, 1%	NIC, NRC06F1001TRF	2000
27	0	R3,R15,R29,R30,R31 (OPT)	RES., 0603	OPT	0
28	6	R5,R10,R11,R13,R14,R22	RES, CHIP, 0Ω, 1/16W, 0603	VISHAY, CRCW06030000Z0ED	1500
29	1	R6	RES., CHIP, 49.9Ω, 1/4W, 1%, 1206	NIC, NRC12F49R9TRF	250
30	2	R17,R23	RES., CHIP, 4.99Ω, 1/10W, 1%, 0603	VISHAY, CRCW06034R99FKEA	500
31	2	R18,R20	RES., CHIP, 0.0Ω, 1/16W, 0402	VISHAY, CRCW04020000Z0ED	500
32	1	R21	RES., CHIP, 2.00KΩ, 1/10W, 1%, 0603	NIC, NRC06F2001TRF	250
33	3	R25,R26,R27	RES., CHIP, 4.99KΩ, 1/10W, 1%, 0603	NIC, NRC06F4991TRF	750
34	1	R34	RES., CHIP, 10KΩ, 1/16W, 1%, 0402	NIC, NRC04F1002TRF	250
35	1	R36	RES., CHIP, 1.69KΩ,1/10W, 1%, 0603	NIC, NRC06F1691TRF	250
36	1	R37	RES., CHIP, 1.54KΩ, 1%, 0603	NIC, NRC06F1541TRF	250
37	1	R38	RES., CHIP, 2.80KΩ, 1%, 0603	NIC, NRC06F2801TRF	250
38	3	R39,R40,R41	RES., CHIP, 1KΩ, 1/16W, 1%, 0402	NIC, NRC04F1001TRF	750
39	1	R42	RES., CHIP, 10KΩ, 1/10W, 1%, 0603	NIC, NRC06F1002TRF	250
40	2	U1,U6	IC, TINYLOGIC UHS INVERTER, SC70-5	FAIRCHILD, NC7SZ04P5X	500
41	2	U2,U5	IC, TINYLOGIC ULP-A UNBUFFERED INVERTER,SC70-5	FAIRCHILD, NC7SVU04P5X	500

# Linear Technology Corporation

ENG: ERJON Q..

LTC6360 DRIVING 18-BIT SAR ADC

**BILL OF MATERIALS**

**DC1796A-2-GENERAL BOM**

**QTY-250**

3/20/2012 10:14 AM

Item	Qty	Reference	Part Description	Manufacturer / Part #	Kit Qty
				<b>NUMBER OF BOARDS =</b>	<b>250</b>
42	1	U3	IC., LTC6655CHMS8-4.096, MS8	LINEAR TECH., LTC6655CHMS8-4.096#PBF	250
43	1	U4	IC, SINGLE D FLIP FLOP, US8	ON SEMI., NL17SZ74	250
44	1	U7	IC, SINGLE SPST BUS SWITCH, SC70-5	FAIRCHILD, NC7SZ66P5X	250
45	1	U9	IC., LTC6360CMS8E, MS8E	LINEAR TECH., LTC6360CMS8E#PBF	250
46	1	U10	IC, SERIAL EEPROM, TSSOP	MICROCHIP, 24LC024-I/ST	250
47	1	U11	IC., LT1763CS8-1.8, SO8	LINEAR TECH., LT1763CS8-1.8#PBF	250
48	1	U12	IC., LT1763CS8, SO8	LINEAR TECH., LT1763CS8#PBF	250
49	1	U13	IC, MAX II FAMILY, TQFP100	ALTERA, EPM240GT100C5N	250
50	1	U14	IC., LT1763CS8-2.5, SO8	LINEAR TECH., LT1763CS8-2.5#PBF	250
51	1	U15	IC., LT1763CS8-5, SO8	LINEAR TECH., LT1763CS8-5#PBF	250
52	4	MH1-MH4	STAND-OFF, NYLON (SNAP ON), 0.375" TALL	KEYSTONE, 8832(SNAP ON)	1000
53	2	STENCILS, TOP & BOTTOM		STENCIL # DC1796A-2	2

**Linear Technology Corporation**  
**LTC6360CMS8E**

**BILL OF MATERIALS**  
**DC1796A2-A**  
**QTY-95**  
3/20/2012 10:14 AM

<i>Item</i>	<i>Qty</i>		<i>Part Description</i>	<i>Manufacturer / Part #</i>	<i>Kit Qty</i>
				<b>NUMBER OF BOARDS =</b>	<b>30</b>
1	1	DC1796A-2	GENERAL BOM		1
2	1	U8	IC., LTC2370CMS-16, MS16	LINEAR TECH.,LTC2370CMS-16, MS16	30
3	1		FAB, PRINTED CIRCUIT BOARD	DEMO CIRCUIT 1796A-2	30
4	0	<b>R35 (OPT)</b>	<b>RES., CHIP, 300Ω, 1%, 0402</b>	<b>OPT</b>	<b>0</b>

**Linear Technology Corporation**  
**LTC6360CMS8E**

**BILL OF MATERIALS**  
**DC1796A2-B**  
**QTY-95**  
3/20/2012 10:14 AM

<i>Item</i>	<i>Qty</i>		<i>Part Description</i>	<i>Manufacturer / Part #</i>	<i>Kit Qty</i>
				<b>NUMBER OF BOARDS =</b>	<b>30</b>
1	1	DC1796A-2	GENERAL BOM		1
2	1	U8	IC., LTC2368CMS-16, MS16	LINEAR TECH., LTC2368CMS-16	30
3	1		FAB, PRINTED CIRCUIT BOARD	DEMO CIRCUIT 1796A-2	30
4	0	<b>R35 (OPT)</b>	<b>RES., CHIP, 300Ω, 1%, 0402</b>	<b>OPT</b>	<b>0</b>

**Linear Technology Corporation**  
**LTC6360CMS8**

**BILL OF MATERIALS**  
**DC1796A2-C**  
**QTY-95**  
3/20/2012 10:14 AM

<i>Item</i>	<i>Qty</i>		<i>Part Description</i>	<i>Manufacturer / Part #</i>	<i>Kit Qty</i>
				<b>NUMBER OF BOARDS =</b>	<b>30</b>
1	1	DC1796A-2	GENERAL BOM		1
2	1	U8	IC., LTC2367CMS-16, MS16	LINEAR TECH., LTC2367CMS-16	30
3	1		FAB, PRINTED CIRCUIT BOARD	DEMO CIRCUIT 1796A-2	30
4	0	<b>R35 (OPT)</b>	<b>RES., CHIP, 300Ω, 1%, 0402</b>	<b>OPT</b>	<b>0</b>

**Linear Technology Corporation**  
**LTC6360CMS8**

**BILL OF MATERIALS**  
**DC1796A2-D**  
**QTY-95**  
3/20/2012 10:14 AM

<i>Item</i>	<i>Qty</i>		<i>Part Description</i>	<i>Manufacturer / Part #</i>	<i>Kit Qty</i>
				<b>NUMBER OF BOARDS =</b>	<b>30</b>
1	1	DC1796A-2	GENERAL BOM		1
2	1	U8	IC., LTC2364CMS-16, MS16	LINEAR TECH., LTC2364CMS-16	30
3	1		FAB, PRINTED CIRCUIT BOARD	DEMO CIRCUIT 1796A-2	30
4	0	<b>R35 (OPT)</b>	<b>RES., CHIP, 300Ω, 1%, 0402</b>	<b>OPT</b>	<b>0</b>

**Linear Technology Corporation**  
**LTC6360CMS8**

**BILL OF MATERIALS**  
**DC1796A2-E**  
**QTY-95**  
3/20/2012 10:14 AM

<i>Item</i>	<i>Qty</i>		<i>Part Description</i>	<i>Manufacturer / Part #</i>	<i>Kit Qty</i>
				<b>NUMBER OF BOARDS =</b>	<b>30</b>
1	1	DC1796A-2	GENERAL BOM		1
2	1	U8	IC., LTC2369CMS-18, MS16	LINEAR TECH., LTC2369CMS-18	30
3	1		FAB, PRINTED CIRCUIT BOARD	DEMO CIRCUIT 1796A-2	30
4	1	<b>R35</b>	<b>RES., CHIP, 300Ω, 1%, 0402</b>	<b>NIC, NRC04F3000TRF</b>	<b>30</b>

**Linear Technology Corporation**  
**LTC6360CMS8**

**BILL OF MATERIALS**  
**DC1796A2-F**  
**QTY-95**  
3/20/2012 10:14 AM

<i>Item</i>	<i>Qty</i>		<i>Part Description</i>	<i>Manufacturer / Part #</i>	<i>Kit Qty</i>
				<b>NUMBER OF BOARDS =</b>	<b>30</b>
1	1	DC1796A-2	GENERAL BOM		1
2	1	U8	IC., LTC2368CMS-18, MS16	LINEAR TECH., LTC2368CMS-18	30
3	1		FAB, PRINTED CIRCUIT BOARD	DEMO CIRCUIT 1796A-2	30
4	1	<b>R35</b>	<b>RES., CHIP, 300Ω, 1%, 0402</b>	<b>NIC, NRC04F3000TRF</b>	<b>30</b>

**Linear Technology Corporation**  
**LTC6360CMS8**

**BILL OF MATERIALS**  
**DC1796A2-G**  
**QTY-95**  
3/20/2012 10:14 AM

<i>Item</i>	<i>Qty</i>		<i>Part Description</i>	<i>Manufacturer / Part #</i>	<i>Kit Qty</i>
				<b>NUMBER OF BOARDS =</b>	<b>30</b>
1	1	DC1796A-2	GENERAL BOM		1
2	1	U8	IC., LTC2367CMS-18, MS16	LINEAR TECH., LTC2367CMS-18	30
3	1		FAB, PRINTED CIRCUIT BOARD	DEMO CIRCUIT 1796A-2	30
4	1	<b>R35</b>	<b>RES., CHIP, 300Ω, 1%, 0402</b>	<b>NIC, NRC04F3000TRF</b>	<b>30</b>

**Linear Technology Corporation**  
**LTC6360CMS8**

**BILL OF MATERIALS**  
**DC1796A2-H**  
**QTY-95**  
3/20/2012 10:14 AM

<i>Item</i>	<i>Qty</i>		<i>Part Description</i>	<i>Manufacturer / Part #</i>	<i>Kit Qty</i>
				<b>NUMBER OF BOARDS =</b>	<b>30</b>
1	1	DC1796A-2	GENERAL BOM		1
2	1	U8	IC., LTC2364CMS-18, MS16	LINEAR TECH., LTC2364CMS-18	30
3	1		FAB, PRINTED CIRCUIT BOARD	DEMO CIRCUIT 1796A-2	30
4	1	<b>R35</b>	<b>RES., CHIP, 300Ω, 1%, 0402</b>	<b>NIC, NRC04F3000TRF</b>	<b>30</b>

**DEMO 1796A-A**  
**LTC6360CMS8E**

LTC6360 DRIVING 18 - BIT  
SAR ADC  
LTC2370CMS - 16  
16 - BIT, 2 MSPS

**DEMO 1796A-A**  
**LTC6360CMS8E**

LTC6360 DRIVING 18 - BIT  
SAR ADC  
LTC2370CMS - 16  
16 - BIT, 2 MSPS

**DEMO 1796A-A**  
**LTC6360CMS8E**

LTC6360 DRIVING 18 - BIT  
SAR ADC  
LTC2370CMS - 16  
16 - BIT, 2 MSPS

**DEMO 1796A-A**  
**LTC6360CMS8E**

LTC6360 DRIVING 18 - BIT  
SAR ADC  
LTC2370CMS - 16  
16 - BIT, 2 MSPS

**DEMO 1796A-A**  
**LTC6360CMS8E**

LTC6360 DRIVING 18 - BIT  
SAR ADC  
LTC2370CMS - 16  
16 - BIT, 2 MSPS

**DEMO 1796A-A**  
**LTC6360CMS8E**

LTC6360 DRIVING 18 - BIT  
SAR ADC  
LTC2370CMS - 16  
16 - BIT, 2 MSPS

**DEMO 1796A-A**  
**LTC6360CMS8E**

LTC6360 DRIVING 18 - BIT  
SAR ADC  
LTC2370CMS - 16  
16 - BIT, 2 MSPS

**DEMO 1796A-A**  
**LTC6360CMS8E**

LTC6360 DRIVING 18 - BIT  
SAR ADC  
LTC2370CMS - 16  
16 - BIT, 2 MSPS

**DEMO 1796A-A**  
**LTC6360CMS8E**

LTC6360 DRIVING 18 - BIT  
SAR ADC  
LTC2370CMS - 16  
16 - BIT, 2 MSPS

**DEMO 1796A-A**  
**LTC6360CMS8E**

LTC6360 DRIVING 18 - BIT  
SAR ADC  
LTC2370CMS - 16  
16 - BIT, 2 MSPS

**DEMO 1796A-A**  
**LTC6360CMS8E**

LTC6360 DRIVING 18 - BIT  
SAR ADC  
LTC2370CMS - 16  
16 - BIT, 2 MSPS

**DEMO 1796A-A**  
**LTC6360CMS8E**

LTC6360 DRIVING 18 - BIT  
SAR ADC  
LTC2370CMS - 16  
16 - BIT, 2 MSPS

**DEMO 1796A-A**  
**LTC6360CMS8E**

LTC6360 DRIVING 18 - BIT  
SAR ADC  
LTC2370CMS - 16  
16 - BIT, 2 MSPS

**DEMO 1796A-A**  
**LTC6360CMS8E**

LTC6360 DRIVING 18 - BIT  
SAR ADC  
LTC2370CMS - 16  
16 - BIT, 2 MSPS

**DEMO 1796A-A**  
**LTC6360CMS8E**

LTC6360 DRIVING 18 - BIT  
SAR ADC  
LTC2370CMS - 16  
16 - BIT, 2 MSPS

**DEMO 1796A-A**  
**LTC6360CMS8E**

LTC6360 DRIVING 18 - BIT  
SAR ADC  
LTC2370CMS - 16  
16 - BIT, 2 MSPS

**DEMO 1796A-B**  
**LTC6360CMS8E**

LTC6360 DRIVING 18 - BIT  
SAR ADC  
LTC2368CMS - 16  
16 - BIT, 1 MSPS

**DEMO 1796A-B**  
**LTC6360CMS8E**

LTC6360 DRIVING 18 - BIT  
SAR ADC  
LTC2368CMS - 16  
16 - BIT, 1 MSPS

**DEMO 1796A-B**  
**LTC6360CMS8E**

LTC6360 DRIVING 18 - BIT  
SAR ADC  
LTC2368CMS - 16  
16 - BIT, 1 MSPS

**DEMO 1796A-B**  
**LTC6360CMS8E**

LTC6360 DRIVING 18 - BIT  
SAR ADC  
LTC2368CMS - 16  
16 - BIT, 1 MSPS

**DEMO 1796A-B**  
**LTC6360CMS8E**

LTC6360 DRIVING 18 - BIT  
SAR ADC  
LTC2368CMS - 16  
16 - BIT, 1 MSPS

**DEMO 1796A-B**  
**LTC6360CMS8E**

LTC6360 DRIVING 18 - BIT  
SAR ADC  
LTC2368CMS - 16  
16 - BIT, 1 MSPS

**DEMO 1796A-B**  
**LTC6360CMS8E**

LTC6360 DRIVING 18 - BIT  
SAR ADC  
LTC2368CMS - 16  
16 - BIT, 1 MSPS

**DEMO 1796A-B**  
**LTC6360CMS8E**

LTC6360 DRIVING 18 - BIT  
SAR ADC  
LTC2368CMS - 16  
16 - BIT, 1 MSPS

**DEMO 1796A-B**  
**LTC6360CMS8E**

LTC6360 DRIVING 18 - BIT  
SAR ADC  
LTC2368CMS - 16  
16 - BIT, 1 MSPS

**DEMO 1796A-B**  
**LTC6360CMS8E**

LTC6360 DRIVING 18 - BIT  
SAR ADC  
LTC2368CMS - 16  
16 - BIT, 1 MSPS

**DEMO 1796A-B**  
**LTC6360CMS8E**

LTC6360 DRIVING 18 - BIT  
SAR ADC  
LTC2368CMS - 16  
16 - BIT, 1 MSPS

**DEMO 1796A-B**  
**LTC6360CMS8E**

LTC6360 DRIVING 18 - BIT  
SAR ADC  
LTC2368CMS - 16  
16 - BIT, 1 MSPS

**DEMO 1796A-B**  
**LTC6360CMS8E**

LTC6360 DRIVING 18 - BIT  
SAR ADC  
LTC2368CMS - 16  
16 - BIT, 1 MSPS

**DEMO 1796A-B**  
**LTC6360CMS8E**

LTC6360 DRIVING 18 - BIT  
SAR ADC  
LTC2368CMS - 16  
16 - BIT, 1 MSPS

**DEMO 1796A-B**  
**LTC6360CMS8E**

LTC6360 DRIVING 18 - BIT  
SAR ADC  
LTC2368CMS - 16  
16 - BIT, 1 MSPS

**DEMO 1796A-B**  
**LTC6360CMS8E**

LTC6360 DRIVING 18 - BIT  
SAR ADC  
LTC2368CMS - 16  
16 - BIT, 1 MSPS

**DEMO 1796A-C**  
**LTC6360CMS8E**

LTC6360 DRIVING 18- BIT  
SAR ADC  
LTC2367CMS - 16  
16 - BIT, 0.5 MSPS

**DEMO 1796A-C**  
**LTC6360CMS8E**

LTC6360 DRIVING 18- BIT  
SAR ADC  
LTC2367CMS - 16  
16 - BIT, 0.5 MSPS

**DEMO 1796A-C**  
**LTC6360CMS8E**

LTC6360 DRIVING 18- BIT  
SAR ADC  
LTC2367CMS - 16  
16 - BIT, 0.5 MSPS

**DEMO 1796A-C**  
**LTC6360CMS8E**

LTC6360 DRIVING 18- BIT  
SAR ADC  
LTC2367CMS - 16  
16 - BIT, 0.5 MSPS

**DEMO 1796A-C**  
**LTC6360CMS8E**

LTC6360 DRIVING 18- BIT  
SAR ADC  
LTC2367CMS - 16  
16 - BIT, 0.5 MSPS

**DEMO 1796A-C**  
**LTC6360CMS8E**

LTC6360 DRIVING 18- BIT  
SAR ADC  
LTC2367CMS - 16  
16 - BIT, 0.5 MSPS

**DEMO 1796A-C**  
**LTC6360CMS8E**

LTC6360 DRIVING 18- BIT  
SAR ADC  
LTC2367CMS - 16  
16 - BIT, 0.5 MSPS

**DEMO 1796A-C**  
**LTC6360CMS8E**

LTC6360 DRIVING 18- BIT  
SAR ADC  
LTC2367CMS - 16  
16 - BIT, 0.5 MSPS

**DEMO 1796A-C**  
**LTC6360CMS8E**

LTC6360 DRIVING 18- BIT  
SAR ADC  
LTC2367CMS - 16  
16 - BIT, 0.5 MSPS

**DEMO 1796A-C**  
**LTC6360CMS8E**

LTC6360 DRIVING 18- BIT  
SAR ADC  
LTC2367CMS - 16  
16 - BIT, 0.5 MSPS

**DEMO 1796A-C**  
**LTC6360CMS8E**

LTC6360 DRIVING 18- BIT  
SAR ADC  
LTC2367CMS - 16  
16 - BIT, 0.5 MSPS

**DEMO 1796A-C**  
**LTC6360CMS8E**

LTC6360 DRIVING 18- BIT  
SAR ADC  
LTC2367CMS - 16  
16 - BIT, 0.5 MSPS

**DEMO 1796A-C**  
**LTC6360CMS8E**

LTC6360 DRIVING 18- BIT  
SAR ADC  
LTC2367CMS - 16  
16 - BIT, 0.5 MSPS

**DEMO 1796A-C**  
**LTC6360CMS8E**

LTC6360 DRIVING 18- BIT  
SAR ADC  
LTC2367CMS - 16  
16 - BIT, 0.5 MSPS

**DEMO 1796A-C**  
**LTC6360CMS8E**

LTC6360 DRIVING 18- BIT  
SAR ADC  
LTC2367CMS - 16  
16 - BIT, 0.5 MSPS

**DEMO 1796A-C**  
**LTC6360CMS8E**

LTC6360 DRIVING 18- BIT  
SAR ADC  
LTC2367CMS - 16  
16 - BIT, 0.5 MSPS

**DEMO 1796A-D**  
**LTC6360CMS8E**

LTC6360 DRIVING 18 - BIT  
SAR ADC  
LTC2364CMS - 16  
16 - BIT, 0.25 MSPS

**DEMO 1796A-D**  
**LTC6360CMS8E**

LTC6360 DRIVING 18 - BIT  
SAR ADC  
LTC2364CMS - 16  
16 - BIT, 0.25 MSPS

**DEMO 1796A-D**  
**LTC6360CMS8E**

LTC6360 DRIVING 18 - BIT  
SAR ADC  
LTC2364CMS - 16  
16 - BIT, 0.25 MSPS

**DEMO 1796A-D**  
**LTC6360CMS8E**

LTC6360 DRIVING 18 - BIT  
SAR ADC  
LTC2364CMS - 16  
16 - BIT, 0.25 MSPS

**DEMO 1796A-D**  
**LTC6360CMS8E**

LTC6360 DRIVING 18 - BIT  
SAR ADC  
LTC2364CMS - 16  
16 - BIT, 0.25 MSPS

**DEMO 1796A-D**  
**LTC6360CMS8E**

LTC6360 DRIVING 18 - BIT  
SAR ADC  
LTC2364CMS - 16  
16 - BIT, 0.25 MSPS

**DEMO 1796A-D**  
**LTC6360CMS8E**

LTC6360 DRIVING 18 - BIT  
SAR ADC  
LTC2364CMS - 16  
16 - BIT, 0.25 MSPS

**DEMO 1796A-D**  
**LTC6360CMS8E**

LTC6360 DRIVING 18 - BIT  
SAR ADC  
LTC2364CMS - 16  
16 - BIT, 0.25 MSPS

**DEMO 1796A-D**  
**LTC6360CMS8E**

LTC6360 DRIVING 18 - BIT  
SAR ADC  
LTC2364CMS - 16  
16 - BIT, 0.25 MSPS

**DEMO 1796A-D**  
**LTC6360CMS8E**

LTC6360 DRIVING 18 - BIT  
SAR ADC  
LTC2364CMS - 16  
16 - BIT, 0.25 MSPS

**DEMO 1796A-D**  
**LTC6360CMS8E**

LTC6360 DRIVING 18 - BIT  
SAR ADC  
LTC2364CMS - 16  
16 - BIT, 0.25 MSPS

**DEMO 1796A-D**  
**LTC6360CMS8E**

LTC6360 DRIVING 18 - BIT  
SAR ADC  
LTC2364CMS - 16  
16 - BIT, 0.25 MSPS

**DEMO 1796A-D**  
**LTC6360CMS8E**

LTC6360 DRIVING 18 - BIT  
SAR ADC  
LTC2364CMS - 16  
16 - BIT, 0.25 MSPS

**DEMO 1796A-D**  
**LTC6360CMS8E**

LTC6360 DRIVING 18 - BIT  
SAR ADC  
LTC2364CMS - 16  
16 - BIT, 0.25 MSPS

**DEMO 1796A-D**  
**LTC6360CMS8E**

LTC6360 DRIVING 18 - BIT  
SAR ADC  
LTC2364CMS - 16  
16 - BIT, 0.25 MSPS

**DEMO 1796A-D**  
**LTC6360CMS8E**

LTC6360 DRIVING 18 - BIT  
SAR ADC  
LTC2364CMS - 16  
16 - BIT, 0.25 MSPS

**DEMO 1796A-E**  
**LTC6360CMS8E**

LTC6360 DRIVING 18 - BIT  
SAR ADC  
LTC2369CMS - 18  
18 - BIT, 1.6 MSPS

**DEMO 1796A-E**  
**LTC6360CMS8E**

LTC6360 DRIVING 18 - BIT  
SAR ADC  
LTC2369CMS - 18  
18 - BIT, 1.6 MSPS

**DEMO 1796A-E**  
**LTC6360CMS8E**

LTC6360 DRIVING 18 - BIT  
SAR ADC  
LTC2369CMS - 18  
18 - BIT, 1.6 MSPS

**DEMO 1796A-E**  
**LTC6360CMS8E**

LTC6360 DRIVING 18 - BIT  
SAR ADC  
LTC2369CMS - 18  
18 - BIT, 1.6 MSPS

**DEMO 1796A-E**  
**LTC6360CMS8E**

LTC6360 DRIVING 18 - BIT  
SAR ADC  
LTC2369CMS - 18  
18 - BIT, 1.6 MSPS

**DEMO 1796A-E**  
**LTC6360CMS8E**

LTC6360 DRIVING 18 - BIT  
SAR ADC  
LTC2369CMS - 18  
18 - BIT, 1.6 MSPS

**DEMO 1796A-E**  
**LTC6360CMS8E**

LTC6360 DRIVING 18 - BIT  
SAR ADC  
LTC2369CMS - 18  
18 - BIT, 1.6 MSPS

**DEMO 1796A-E**  
**LTC6360CMS8E**

LTC6360 DRIVING 18 - BIT  
SAR ADC  
LTC2369CMS - 18  
18 - BIT, 1.6 MSPS

**DEMO 1796A-E**  
**LTC6360CMS8E**

LTC6360 DRIVING 18 - BIT  
SAR ADC  
LTC2369CMS - 18  
18 - BIT, 1.6 MSPS

**DEMO 1796A-E**  
**LTC6360CMS8E**

LTC6360 DRIVING 18 - BIT  
SAR ADC  
LTC2369CMS - 18  
18 - BIT, 1.6 MSPS

**DEMO 1796A-E**  
**LTC6360CMS8E**

LTC6360 DRIVING 18 - BIT  
SAR ADC  
LTC2369CMS - 18  
18 - BIT, 1.6 MSPS

**DEMO 1796A-E**  
**LTC6360CMS8E**

LTC6360 DRIVING 18 - BIT  
SAR ADC  
LTC2369CMS - 18  
18 - BIT, 1.6 MSPS

**DEMO 1796A-E**  
**LTC6360CMS8E**

LTC6360 DRIVING 18 - BIT  
SAR ADC  
LTC2369CMS - 18  
18 - BIT, 1.6 MSPS

**DEMO 1796A-E**  
**LTC6360CMS8E**

LTC6360 DRIVING 18 - BIT  
SAR ADC  
LTC2369CMS - 18  
18 - BIT, 1.6 MSPS

**DEMO 1796A-E**  
**LTC6360CMS8E**

LTC6360 DRIVING 18 - BIT  
SAR ADC  
LTC2369CMS - 18  
18 - BIT, 1.6 MSPS

**DEMO 1796A-E**  
**LTC6360CMS8E**

LTC6360 DRIVING 18 - BIT  
SAR ADC  
LTC2369CMS - 18  
18 - BIT, 1.6 MSPS

**DEMO 1796A-F**  
**LTC6360CMS8E**

LTC6360 DRIVING 18 - BIT  
SAR ADC  
LTC2368CMS - 18  
18 - BIT, 1 MSPS

**DEMO 1796A-F**  
**LTC6360CMS8E**

LTC6360 DRIVING 18 - BIT  
SAR ADC  
LTC2368CMS - 18  
18 - BIT, 1 MSPS

**DEMO 1796A-F**  
**LTC6360CMS8E**

LTC6360 DRIVING 18 - BIT  
SAR ADC  
LTC2368CMS - 18  
18 - BIT, 1 MSPS

**DEMO 1796A-F**  
**LTC6360CMS8E**

LTC6360 DRIVING 18 - BIT  
SAR ADC  
LTC2368CMS - 18  
18 - BIT, 1 MSPS

**DEMO 1796A-F**  
**LTC6360CMS8E**

LTC6360 DRIVING 18 - BIT  
SAR ADC  
LTC2368CMS - 18  
18 - BIT, 1 MSPS

**DEMO 1796A-F**  
**LTC6360CMS8E**

LTC6360 DRIVING 18 - BIT  
SAR ADC  
LTC2368CMS - 18  
18 - BIT, 1 MSPS

**DEMO 1796A-F**  
**LTC6360CMS8E**

LTC6360 DRIVING 18 - BIT  
SAR ADC  
LTC2368CMS - 18  
18 - BIT, 1 MSPS

**DEMO 1796A-F**  
**LTC6360CMS8E**

LTC6360 DRIVING 18 - BIT  
SAR ADC  
LTC2368CMS - 18  
18 - BIT, 1 MSPS

**DEMO 1796A-F**  
**LTC6360CMS8E**

LTC6360 DRIVING 18 - BIT  
SAR ADC  
LTC2368CMS - 18  
18 - BIT, 1 MSPS

**DEMO 1796A-F**  
**LTC6360CMS8E**

LTC6360 DRIVING 18 - BIT  
SAR ADC  
LTC2368CMS - 18  
18 - BIT, 1 MSPS

**DEMO 1796A-F**  
**LTC6360CMS8E**

LTC6360 DRIVING 18 - BIT  
SAR ADC  
LTC2368CMS - 18  
18 - BIT, 1 MSPS

**DEMO 1796A-F**  
**LTC6360CMS8E**

LTC6360 DRIVING 18 - BIT  
SAR ADC  
LTC2368CMS - 18  
18 - BIT, 1 MSPS

**DEMO 1796A-F**  
**LTC6360CMS8E**

LTC6360 DRIVING 18 - BIT  
SAR ADC  
LTC2368CMS - 18  
18 - BIT, 1 MSPS

**DEMO 1796A-F**  
**LTC6360CMS8E**

LTC6360 DRIVING 18 - BIT  
SAR ADC  
LTC2368CMS - 18  
18 - BIT, 1 MSPS

**DEMO 1796A-F**  
**LTC6360CMS8E**

LTC6360 DRIVING 18 - BIT  
SAR ADC  
LTC2368CMS - 18  
18 - BIT, 1 MSPS

**DEMO 1796A-F**  
**LTC6360CMS8E**

LTC6360 DRIVING 18 - BIT  
SAR ADC  
LTC2368CMS - 18  
18 - BIT, 1 MSPS

**DEMO 1796A-G**  
**LTC6360CMS8E**  
LTC6360 DRIVING 18 - BIT  
SAR ADC  
LTC2367CMS - 18  
18 - BIT, 0.5 MSPS

**DEMO 1796A-G**  
**LTC6360CMS8E**  
LTC6360 DRIVING 18 - BIT  
SAR ADC  
LTC2367CMS - 18  
18 - BIT, 0.5 MSPS

**DEMO 1796A-G**  
**LTC6360CMS8E**  
LTC6360 DRIVING 18 - BIT  
SAR ADC  
LTC2367CMS - 18  
18 - BIT, 0.5 MSPS

**DEMO 1796A-G**  
**LTC6360CMS8E**  
LTC6360 DRIVING 18 - BIT  
SAR ADC  
LTC2367CMS - 18  
18 - BIT, 0.5 MSPS

**DEMO 1796A-G**  
**LTC6360CMS8E**  
LTC6360 DRIVING 18 - BIT  
SAR ADC  
LTC2367CMS - 18  
18 - BIT, 0.5 MSPS

**DEMO 1796A-G**  
**LTC6360CMS8E**  
LTC6360 DRIVING 18 - BIT  
SAR ADC  
LTC2367CMS - 18  
18 - BIT, 0.5 MSPS

**DEMO 1796A-G**  
**LTC6360CMS8E**  
LTC6360 DRIVING 18 - BIT  
SAR ADC  
LTC2367CMS - 18  
18 - BIT, 0.5 MSPS

**DEMO 1796A-G**  
**LTC6360CMS8E**  
LTC6360 DRIVING 18 - BIT  
SAR ADC  
LTC2367CMS - 18  
18 - BIT, 0.5 MSPS

**DEMO 1796A-G**  
**LTC6360CMS8E**  
LTC6360 DRIVING 18 - BIT  
SAR ADC  
LTC2367CMS - 18  
18 - BIT, 0.5 MSPS

**DEMO 1796A-G**  
**LTC6360CMS8E**  
LTC6360 DRIVING 18 - BIT  
SAR ADC  
LTC2367CMS - 18  
18 - BIT, 0.5 MSPS

**DEMO 1796A-G**  
**LTC6360CMS8E**  
LTC6360 DRIVING 18 - BIT  
SAR ADC  
LTC2367CMS - 18  
18 - BIT, 0.5 MSPS

**DEMO 1796A-G**  
**LTC6360CMS8E**  
LTC6360 DRIVING 18 - BIT  
SAR ADC  
LTC2367CMS - 18  
18 - BIT, 0.5 MSPS

**DEMO 1796A-G**  
**LTC6360CMS8E**  
LTC6360 DRIVING 18 - BIT  
SAR ADC  
LTC2367CMS - 18  
18 - BIT, 0.5 MSPS

**DEMO 1796A-G**  
**LTC6360CMS8E**  
LTC6360 DRIVING 18 - BIT  
SAR ADC  
LTC2367CMS - 18  
18 - BIT, 0.5 MSPS

**DEMO 1796A-G**  
**LTC6360CMS8E**  
LTC6360 DRIVING 18 - BIT  
SAR ADC  
LTC2367CMS - 18  
18 - BIT, 0.5 MSPS

**DEMO 1796A-G**  
**LTC6360CMS8E**  
LTC6360 DRIVING 18 - BIT  
SAR ADC  
LTC2367CMS - 18  
18 - BIT, 0.5 MSPS

**DEMO 1796A-H**  
**LTC6360CMS8E**  
LTC6360 DRIVING 18 - BIT  
SAR ADC  
LTC2364CMS - 18  
18 - BIT, 0.25 MSPS

**DEMO 1796A-H**  
**LTC6360CMS8E**  
LTC6360 DRIVING 18 - BIT  
SAR ADC  
LTC2364CMS - 18  
18 - BIT, 0.25 MSPS

**DEMO 1796A-H**  
**LTC6360CMS8E**  
LTC6360 DRIVING 18 - BIT  
SAR ADC  
LTC2364CMS - 18  
18 - BIT, 0.25 MSPS

**DEMO 1796A-H**  
**LTC6360CMS8E**  
LTC6360 DRIVING 18 - BIT  
SAR ADC  
LTC2364CMS - 18  
18 - BIT, 0.25 MSPS

**DEMO 1796A-H**  
**LTC6360CMS8E**  
LTC6360 DRIVING 18 - BIT  
SAR ADC  
LTC2364CMS - 18  
18 - BIT, 0.25 MSPS

**DEMO 1796A-H**  
**LTC6360CMS8E**  
LTC6360 DRIVING 18 - BIT  
SAR ADC  
LTC2364CMS - 18  
18 - BIT, 0.25 MSPS

**DEMO 1796A-H**  
**LTC6360CMS8E**  
LTC6360 DRIVING 18 - BIT  
SAR ADC  
LTC2364CMS - 18  
18 - BIT, 0.25 MSPS

**DEMO 1796A-H**  
**LTC6360CMS8E**  
LTC6360 DRIVING 18 - BIT  
SAR ADC  
LTC2364CMS - 18  
18 - BIT, 0.25 MSPS

**DEMO 1796A-H**  
**LTC6360CMS8E**  
LTC6360 DRIVING 18 - BIT  
SAR ADC  
LTC2364CMS - 18  
18 - BIT, 0.25 MSPS

**DEMO 1796A-H**  
**LTC6360CMS8E**  
LTC6360 DRIVING 18 - BIT  
SAR ADC  
LTC2364CMS - 18  
18 - BIT, 0.25 MSPS

**DEMO 1796A-H**  
**LTC6360CMS8E**  
LTC6360 DRIVING 18 - BIT  
SAR ADC  
LTC2364CMS - 18  
18 - BIT, 0.25 MSPS

**DEMO 1796A-H**  
**LTC6360CMS8E**  
LTC6360 DRIVING 18 - BIT  
SAR ADC  
LTC2364CMS - 18  
18 - BIT, 0.25 MSPS

**DEMO 1796A-H**  
**LTC6360CMS8E**  
LTC6360 DRIVING 18 - BIT  
SAR ADC  
LTC2364CMS - 18  
18 - BIT, 0.25 MSPS

**DEMO 1796A-H**  
**LTC6360CMS8E**  
LTC6360 DRIVING 18 - BIT  
SAR ADC  
LTC2364CMS - 18  
18 - BIT, 0.25 MSPS

**DEMO 1796A-H**  
**LTC6360CMS8E**  
LTC6360 DRIVING 18 - BIT  
SAR ADC  
LTC2364CMS - 18  
18 - BIT, 0.25 MSPS

**DEMO 1796A-H**  
**LTC6360CMS8E**  
LTC6360 DRIVING 18 - BIT  
SAR ADC  
LTC2364CMS - 18  
18 - BIT, 0.25 MSPS