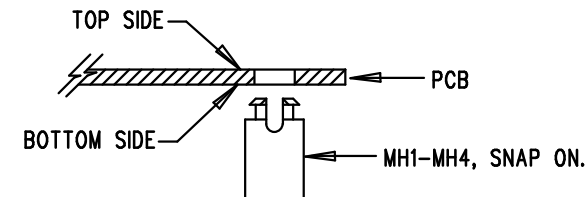


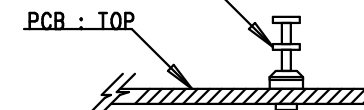
REVISION HISTORY				
ECO	REV	DESCRIPTION	APP. ENG.	DATE
-	2	PRODUCTION	G.HOOVER	07-16-12

NOTES: UNLESS OTHERWISE SPECIFIED

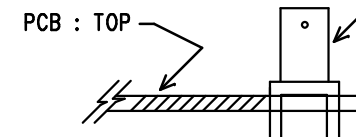
1. WORKMANSHIP SHALL BE IN ACCORDANCE WITH IPC-A-610.
2. ASSEMBLY PROCESS SHALL INCLUDE REFLOW SOLDER TOP AND BOTTOM SIDES. MAXIMUM TEMPERATURE SHALL NOT EXCEED 240 DEGREES CELSIUS.
3. OMITTED (OPTIONAL) PARTS ARE SPECIFIED ON THE BILL OF MATERIALS. LAND PATTERNS FOR THESE PARTS SHALL BE FREE OF SOLDER. MASK THE SOLDER STENCIL AT THESE LOCATIONS.
4. INSTALL SHUNTS AS SHOWN ON ASSY DRAWING.
5. DEPANELIZE BOARDS AFTER ASSEMBLY AND ROUTE-OUT THE BREAKOUT TABS ON ALL BOARD EDGES.
6. DO NOT APPLY ANY KIND OF ASSEMBLY STAMP OR QA STAMP TO ANY BOARD.
7. INSTALL 4 STANDOFFS AT 4 LOCATIONS AS SHOWN BELOW:




8. INSTALL TURRETS, E1-E10, AS SHOWN:
TURRETS : TYPICAL, MILL-MAX 2308-2, 2501-2

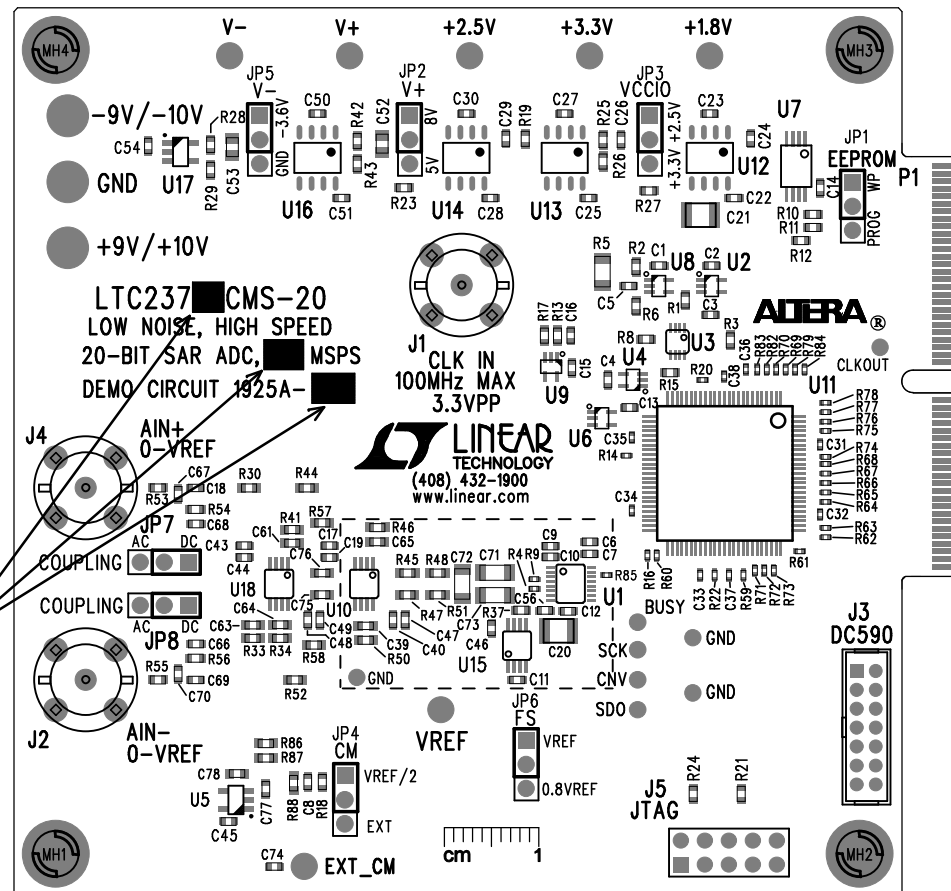


9. INSTALL BNC JACKS J1,J2,J4 AS SHOWN:
CONNECTOR : AMPHENOL CONNEX #112404



APPROVALS

PCB DES.	M.HAWKINS	 LINEAR TECHNOLOGY 1630 MCCARTHY BLVD MILPITAS, CA 95035 PH: (408)432-1900 www.linear.com LTC CONFIDENTIAL- FOR CUSTOMER USE ONLY		
APP ENG.	G.HOOVER			
		TITLE: TOP ASSEMBLY DRAWING		
		LOW NOISE, HIGH SPEED		
		20-BIT SAR ADC		
SIZE	IC NO. LTC237XCMS-20 FAMILY	REV.		
N/A	DEMO CIRCUIT 1925A	2		
SCALE = NONE		FILENAME: DC1925A-2.PCB	SHT 1 OF 2	



10. MARK EACH LTC ASSEMBLY TYPE, U1 PART NUMBER, AND SAMPLE RATE WITH BLACK PERMANENT MARKER AS SHOWN IN TABLE BELOW:

ASSY	U1	MSPS
-A	LTC2378CMS-20	1
-B	LTC2377CMS-20	0.5
-C	LTC2376CMS-20	0.25