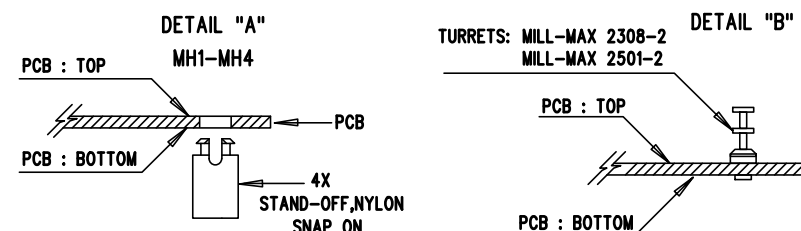
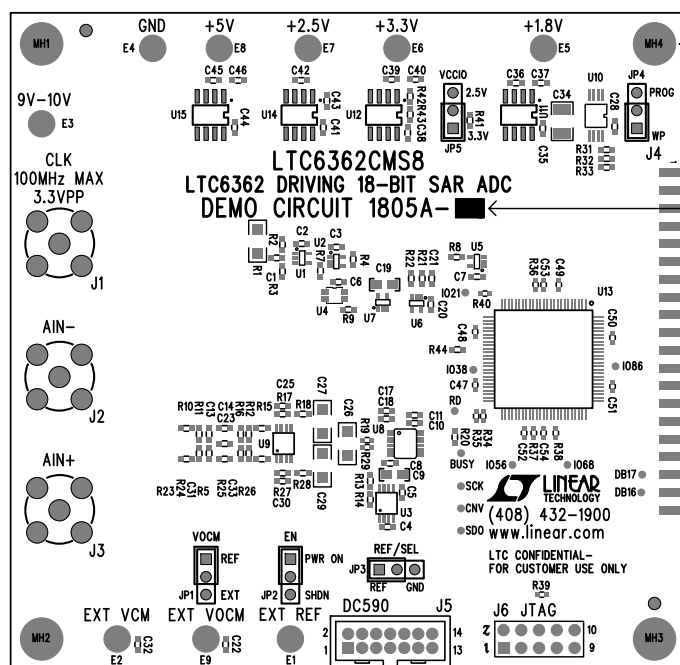


REVISION HISTORY				
ECO	REV	DESCRIPTION	APPR	DATE
	2	PRODUCTION FAB	ERJON Q.	10-14-11

NOTES: UNLESS OTHERWISE SPECIFIED

1. WORKMANSHIP SHALL BE IN ACCORDANCE WITH IPC-A-610.
2. ASSEMBLY PROCESS SHALL INCLUDE: REFLOW SOLDER TOP SIDE SMD. MAXIMUM SOLDER TEMPERATURE IS 240 DEGREES CELSIUS.
3. PARTS TO OMIT WILL BE SPECIFIED ON THE BILL OF MATERIALS. LOCATIONS OF OMITTED PARTS SHALL BE FREE OF SOLDER. MASK THE SOLDER STENCIL WHERE SMT PARTS ARE OMITTED.
4. INSTALL SHUNTS AS SHOWN ON ASSY DRAWING.
5. DEPANELIZE BOARDS AFTER ASSEMBLY AND ROUTE-OUT THE BREAKOUT TABS ON FOUR SIDES OF THE BOARD EDGE.
6. INSTALL TURRETS, STAND-OFFS AS SHOWN BELOW:



7. MARK EACH ASSEMBLY TYPE WITH BLACK PERMANENT MARKER AS SHOWN IN TABLE BELOW:

ASSY	U8	MSPS	BITS
-A	LTC2380CMS-16	2.0	16
-B	LTC2378CMS-16	1.0	16
-C	LTC2377CMS-16	0.5	16
-D	LTC2376CMS-16	0.25	16
-E	LTC2379CMS-18	1.6	18
-F	LTC2378CMS-18	1.0	18
-G	LTC2377CMS-18	0.5	18
-H	LTC2376CMS-18	0.25	18

APPROVALS		LINEAR TECHNOLOGY	
NAME		1630 MCCARTHY BLVD MILPITAS, CA 95035 PH: (408)432-1900 www.linear.com LTC CONFIDENTIAL - FOR CUSTOMER USE ONLY	
PCB DES.	NC	TITLE: TOP ASSEMBLY DRAWING:	
APP ENG.	ERJON Q.	LTC6362 DRIVING 18-BIT SAR ADC	
SIZE	IC NO.	LTC6362CMS8	REV.
N/A	DEMO CIRCUIT 1805A-A/H		2
SCALE = NONE		FILENAME: DC1805A-2.PCB	SHT 1 of 2