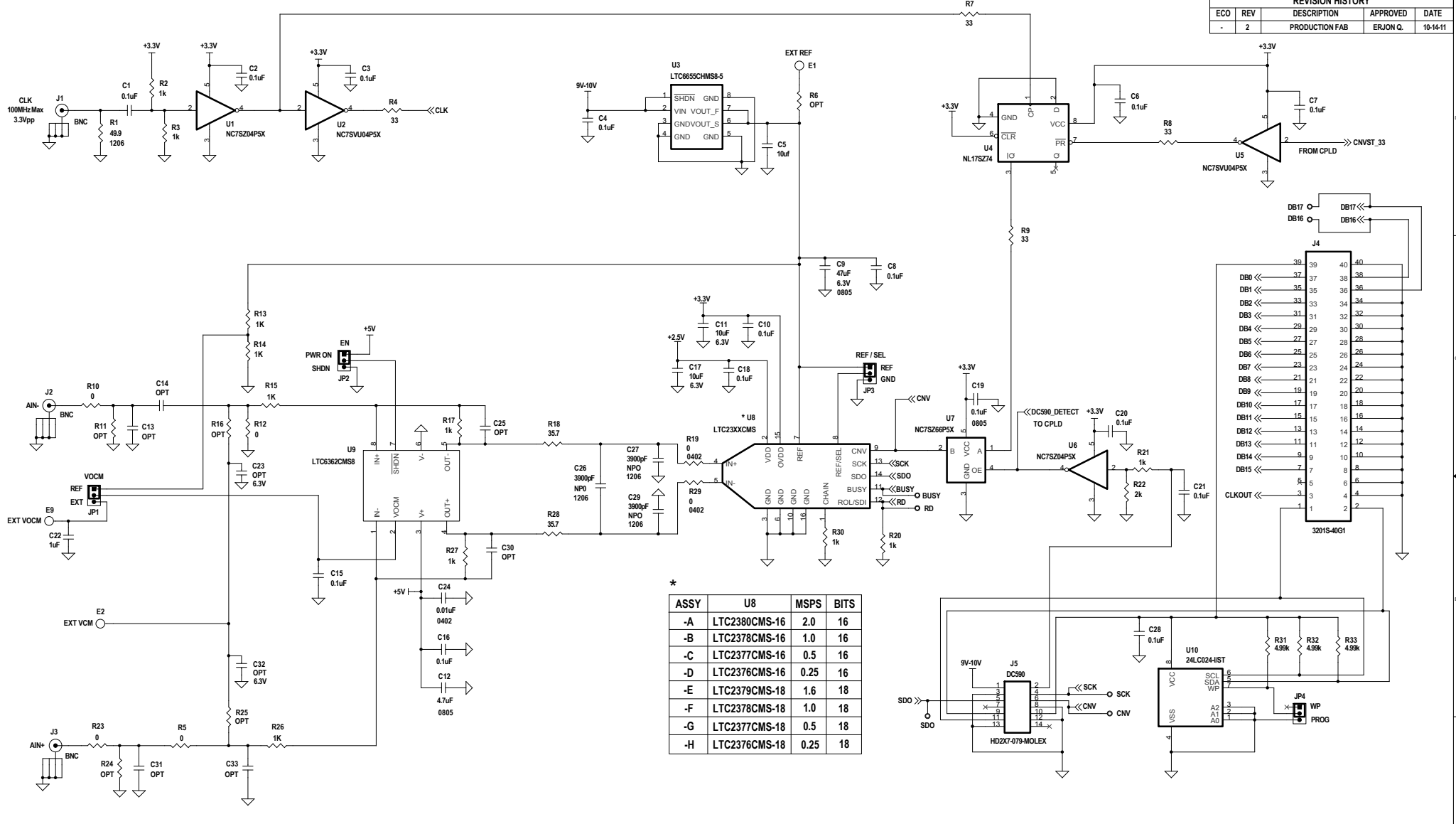


REVISION HISTORY				
ECO	REV	DESCRIPTION	APPROVED	DATE
-	2	PRODUCTION FAB	ERJON Q.	10-14-11



\* U8

ASSY	U8	MSPS	BITS
-A	LTC2380CMS-16	2.0	16
-B	LTC2378CMS-16	1.0	16
-C	LTC2377CMS-16	0.5	16
-D	LTC2376CMS-16	0.25	16
-E	LTC2379CMS-18	1.6	18
-F	LTC2378CMS-18	1.0	18
-G	LTC2377CMS-18	0.5	18
-H	LTC2376CMS-18	0.25	18

NOTE: UNLESS OTHERWISE SPECIFIED  
 1. ALL RESISTORS ARE IN OHMS, 0603.  
 ALL CAPACITORS ARE IN MICROFARADS, 0603.  
 2. INSTALL SHUNTS AS SHOWN.

**CUSTOMER NOTICE**  
 LINEAR TECHNOLOGY HAS MADE A BEST EFFORT TO DESIGN A CIRCUIT THAT MEETS CUSTOMER-SUPPLIED SPECIFICATIONS. HOWEVER, IT REMAINS THE CUSTOMER'S RESPONSIBILITY TO VERIFY PROPER AND RELIABLE OPERATION IN THE ACTUAL APPLICATION. COMPONENT SUBSTITUTION AND PRINTED CIRCUIT BOARD LAYOUT MAY SIGNIFICANTLY AFFECT CIRCUIT PERFORMANCE OR RELIABILITY. CONTACT LINEAR TECHNOLOGY APPLICATIONS ENGINEERING FOR ASSISTANCE.  
 THIS CIRCUIT IS PROPRIETARY TO LINEAR TECHNOLOGY AND SUPPLIED FOR USE WITH LINEAR TECHNOLOGY PARTS.

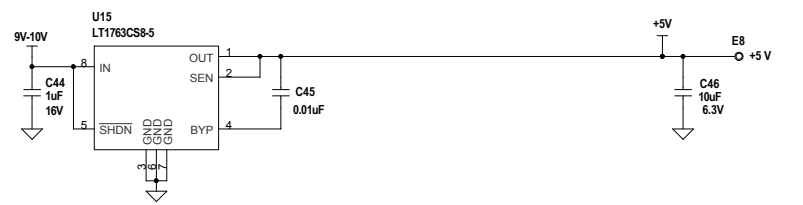
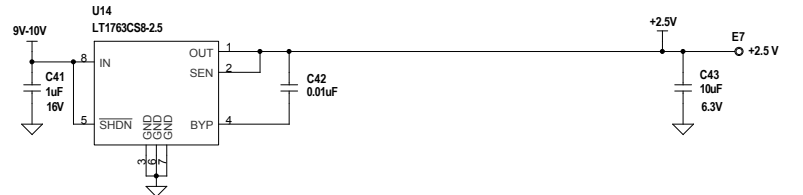
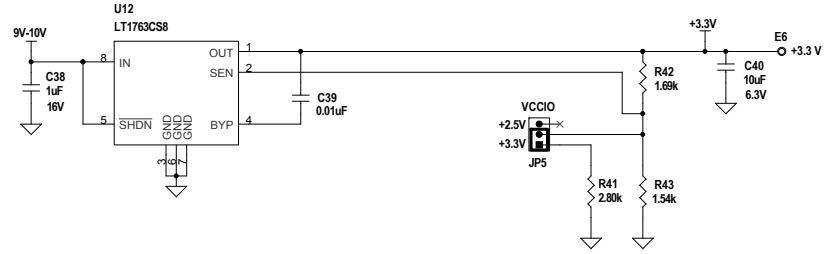
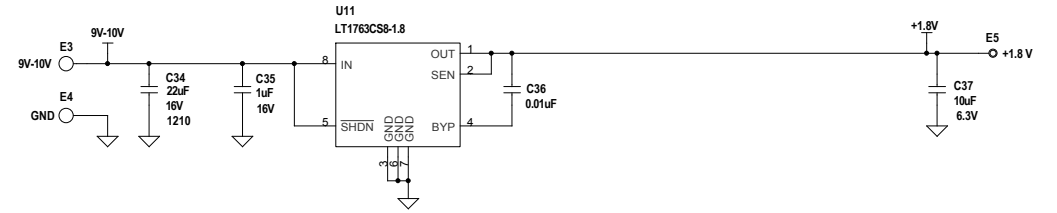
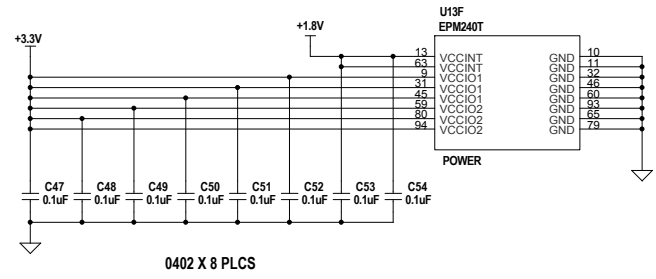
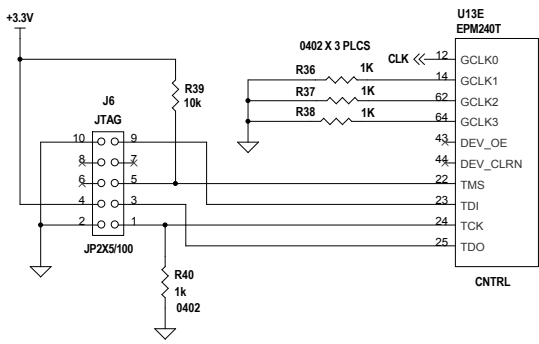
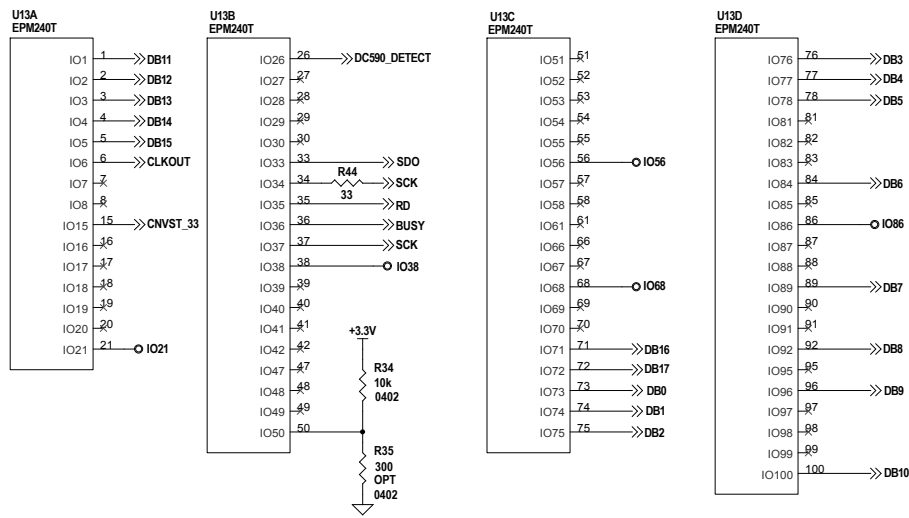
**APPROVALS**

PCB DES:	NC
APP ENG:	ERJON Q.
SCALE:	NONE

**LINEAR TECHNOLOGY**  
 1630 McCarthy Blvd.  
 Milpitas, CA 95035  
 Phone: (408)321-3900  
 Fax: (408)434-0507  
 www.linear.com  
 LTC Confidential-For Customer Use Only

**TITLE: SCHEMATIC**  
**LTC6362 DRIVING 18 - BIT SAR ADC**

SIZE:	N/A	IC NO.:	LTC6362CMS8	REV.:	2
DATE:	10-14-11	TITLE: DEMO CIRCUIT1805A - A / H		SHEET 1 OF 2	



CUSTOMER NOTICE		APPROVALS		LINEAR TECHNOLOGY	
LINEAR TECHNOLOGY HAS MADE A BEST EFFORT TO DESIGN A CIRCUIT THAT MEETS CUSTOMER-SUPPLIED SPECIFICATIONS; HOWEVER, IT REMAINS THE CUSTOMER'S RESPONSIBILITY TO VERIFY PROPER AND RELIABLE OPERATION IN THE ACTUAL APPLICATION. COMPONENT SUBSTITUTION AND PRINTED CIRCUIT BOARD LAYOUT MAY SIGNIFICANTLY AFFECT CIRCUIT PERFORMANCE OR RELIABILITY. CONTACT LINEAR TECHNOLOGY APPLICATIONS ENGINEERING FOR ASSISTANCE.		PCB DES.	NC	1630 McCarthy Blvd. Milpitas, CA 95035 Phone: (408)432-1900 www.linear.com Fax: (408)434-0507 LTC Confidential-For Customer Use Only	
THIS CIRCUIT IS PROPRIETARY TO LINEAR TECHNOLOGY AND SUPPLIED FOR USE WITH LINEAR TECHNOLOGY PARTS.		APP ENG.	ERJON Q.	TITLE: SCHEMATIC	
				LTC6362 DRIVING 18 - BIT SAR ADC	
		SIZE	N/A	IC NO.	LTC6362CMS8
				DEMO CIRCUIT 1805A - A / H	
		SCALE	NONE	REV.	2
		DATE:	10-14-11	SHEET 2 OF 2	