

REVISION HISTORY				
ECO	REV	DESCRIPTION	APP. ENG.	DATE
-	1	PRODUCTION	G. HOOVER	09-24-14

NOTES: UNLESS OTHERWISE SPECIFIED

- FAB PER IPC-A-600.
- MATERIAL: -LEAD FREE ASSEMBLY COMPLIANT, FR-370HR
-FINISHED THICKNESS TO BE 0.062" +/- .005"
-TOTAL OF 4 LAYERS WITH FINISHED COPPER THICKNESS 2.0 OZ. OUTER LAYERS, 1.0 OZ. INNER LAYERS.
STACKUP AS PER FIG.1, "STACKUP DETAILS".
-FLAMMABILITY RATING: 94 V-0 MINIMUM.
- SIZE: CUT TO DIMENSIONS AND TOLERANCES SHOWN.
- DRILLING: -DRILL HOLES PER SCHEDULE. PLATE THROUGH HOLES WITH COPPER, 0.001" THICK MIN.
-ALL HOLE SIZES ARE SPECIFIED AFTER PLATING.
-HOLE LOCATION TOLERANCES SHALL BE 6 MILS DIAMETER TRUE POSITION.
- FINISH: -SMOBC USING LPI BOTH SIDES, COLOR GREEN.
-SILKSCREEN LEGENDS SHALL BE WHITE NON-CONDUCTIVE EPOXY INK.
-PLATING SHALL BE IMMERSION GOLD BOTH SIDES.
-EDGE CONNECTOR FINGERS SHALL HAVE HARD GOLD PLATE TO MINIMUM 30 MICROINCHES PER MIL-G-45204, TYPE II, CLASS 1, GRADE C, OVER 200 MICROINCHES LOW STRESS NICKEL PER QQ-N-290, CLASS 2.
-EDGE CONNECTOR SHALL HAVE MITERED CORNERS AND BEVELED EDGES AS PER FIGURE 2, "EDGE CONNECTOR DETAILS".
- DO NOT ALTER ARTWORK e.g. TO ADD LOGO OR DATE CODE. PAD SIZE CAN BE MODIFIED TO MEET END FINISH.
- PCBS SHALL BE RoHS COMPLIANT.
- PCB'S SHALL BE PANELIZED USING ROUTE AND RETAIN METHOD. THERE SHALL BE TWO RETAINING TABS ON ALL BOARD EDGES GREATER THAN 2.5 INCHES LONG.
- ELECTRICAL TEST STAMPS SHALL BE ON BOTTOM SIDE ONLY.

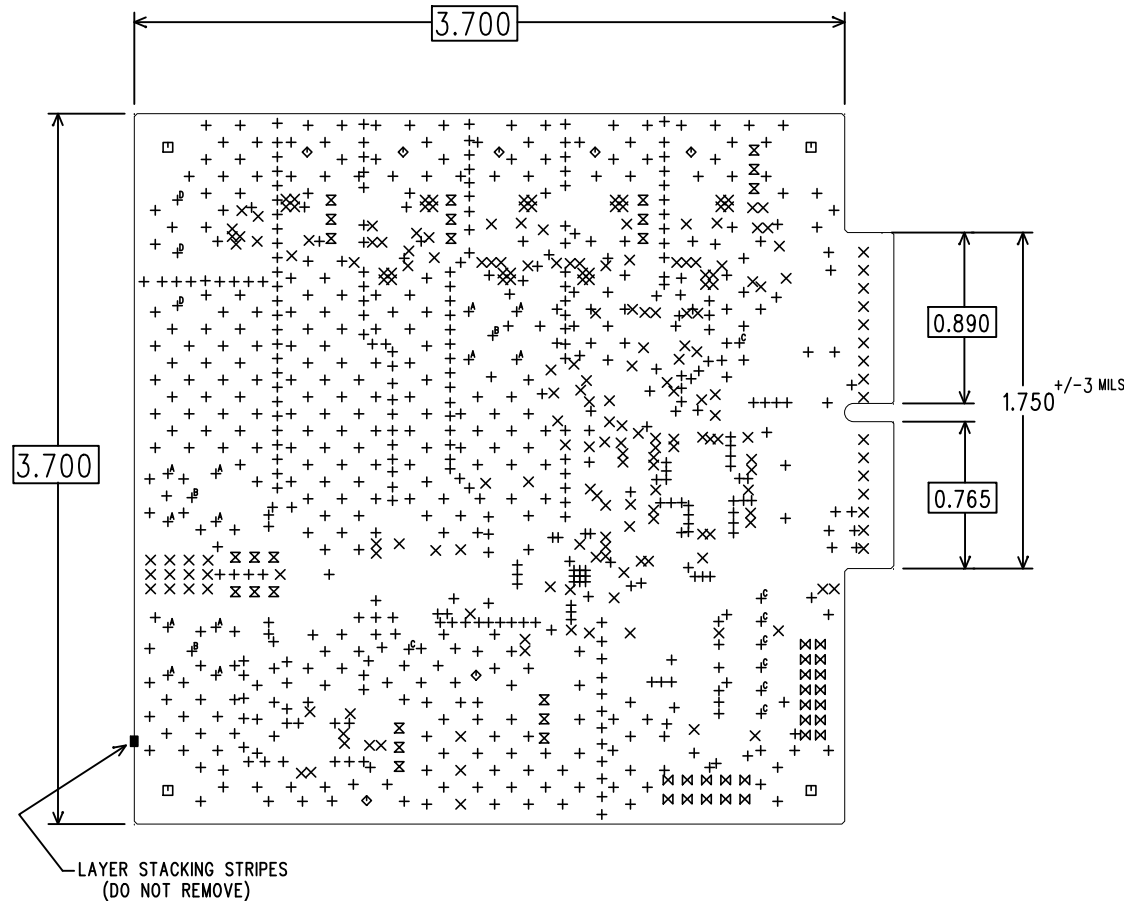


FIG. 1
STACKUP DETAILS

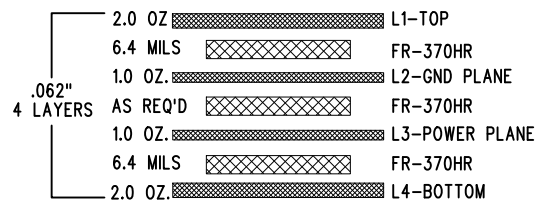
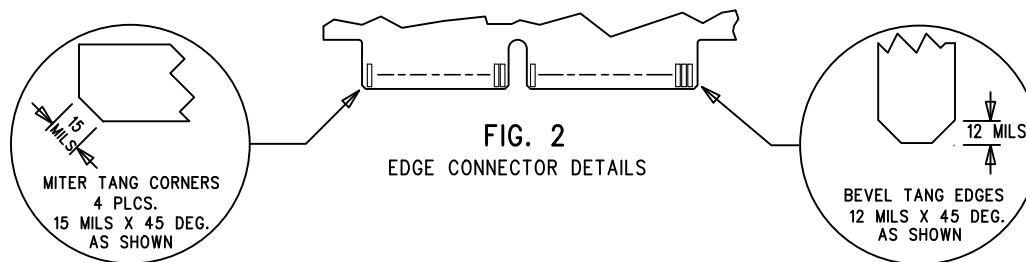



FIG. 2
EDGE CONNECTOR DETAILS



SIZE	QTY	SYM	PLATED	TOL
10	662	+	YES	+/- 3 MILS
12	210	X	YES	+/- 3 MILS
188	4	□	NO	+/- 3 MILS
65	7	◇	YES	+/- 3 MILS
40	24	⊗	YES	+/- 3 MILS
35	24	⊗	YES	+/- 3 MILS
60	12	⊕ ^A	YES	+/- 3 MILS
51	3	⊕ ^B	YES	+/- 3 MILS
30	8	⊕ ^C	YES	+/- 3 MILS
95	3	⊕ ^D	YES	+/- 3 MILS

DRILL DRAWING

UNLESS OTHERWISE SPECIFIED		APPROVALS		 1630 MCCARTHY BLVD MILPITAS, CA 95035 PH: (408)432-1900 www.linear.com LTC CONFIDENTIAL- FOR CUSTOMER USE ONLY	
DIMENSIONS ARE IN INCHES		PCB DES.	M. HAWKINS		
TOLERANCES:		APP ENG.	G. HOOVER	TITLE: FABRICATION DRAWING	
0.XX" = ±0.01"				LOW POWER, HIGH SPEED 24-BIT SAR ADC	
0.XXX" = ±0.005"				WITH DIGITAL FILTER	
INTERPRET DIM AND TOL				SIZE	IC NO. LTC23XX-24
PER ASME Y14.5M-1994				N/A	DEMO CIRCUIT 2289A
THIRD ANGLE PROJECTION				SCALE = NONE	REV 1
				FILENAME: DC2289A-1.PCB	SHT 1 OF 1